



THE AQUAPULSE SYSTEM

LINE: C-1040

S.P. 556 to S.P. 664

DATUM PLANE: SEA LEVEL



AREA: LAMPEDUSA

PROSPECT: ZONE "C"



WESTERN DIGITAL
GEOPHYSICAL SERVICES
MILAN, DIGITAL CENTER

RECORDING DATA		PROCESSING INFORMATION		PROCESSING SEQUENCE	
PARTY NO. 62	AQUAPULSE	SAMPLE RATE 2 ms		1) EDIT (SUM 3 POPS)	
ENERGY SOURCE 10-50 MZ	10-50 MZ	TIME VARIANT FILTER		2) DECONVOLVED BEFORE STACK	
CABLE 1800 M.	1800 M.	L.C. H.C.		3) NORMAL WAVE OUT	
GEOPHONES 32 CRYSTAL ELEMENT	32 CRYSTAL ELEMENT	TIME ZONE Hz DB OCT Hz DB OCT		4) 1200 % STACK	
LEAD IN TAPERED ARRAY 760'	760'	0.00-0.500 20 18 50 18		5) TIME VARIANT FILTER	
AMPLIFIER RECORD BINARY GAIN	4 GUNS POP	0.500-0.700 15 12 50 12		6) FLAVOCH (UNFILTERED)	
CHANGE SIZE	4 GUNS POP	0.700-1.700 10 10 50 12		7) SLOTTED ANALYSIS	
DATE SHOT AUGUST 1968	AUGUST 1968	1.700-2.400 10 10 35 12		REEL NO. 7.3.191	
		2.400-5.000 5 6 30 6		DATE JANUARY 1969	
		AUTO CORR. INT. TIME VARIANT			
		MAX. APERTURE 0.800 m.			
		TIME ZONE 0-5 Sec			
		ITERATIONS 2			

556 562 568 574 580 586 592 598 604 610 616 622 628 634 640 646 652 658 664

INTERSECTION LINE C-1029 S.P. 520

M-ITSI 5206

VELOCITY CHANGE

M-ITSI 5162

M-ITSI 5091

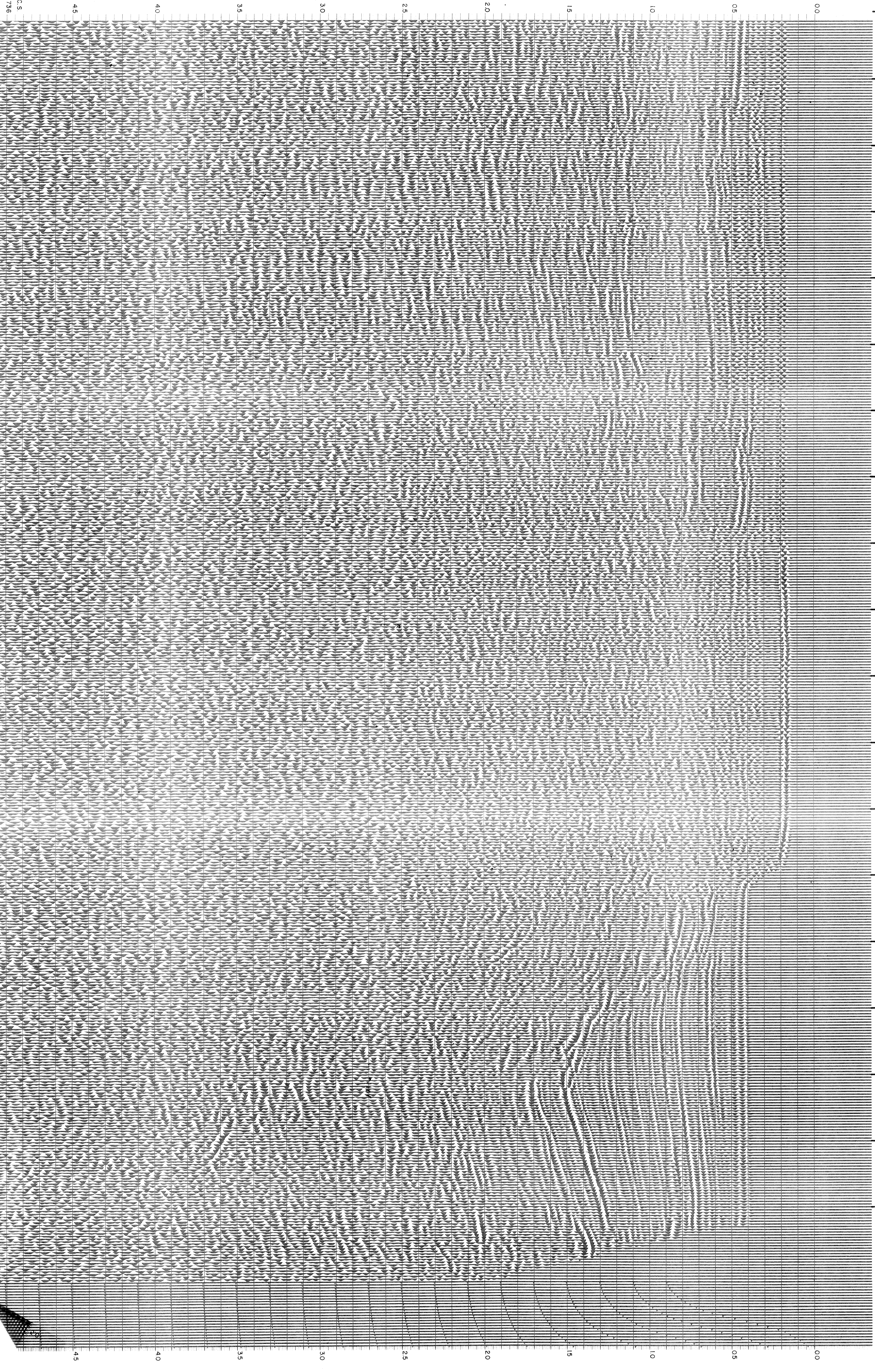
M-ITSI 5092

M-ITSI 5084

INTERSECTION LINE C-1027 S.P. 460

M-ITSI 5092

WATER DEPTH IN METRES



SOUTHWEST