

THE AQUAPULSE SYSTEM

/ 11 -

LINE: C-1040

S.P. 442 to S.P. 550

DATUM PLANE : SEA LEVEL

M-ITSI 5205



AREA : LAMPEDUSA

PROSPECT : ZONE "C"

WESTERN  
GEOPHYSICAL  
DIVISION OF PETROBRAS  
MILAN DIGITAL CENTER

RECORDING DATA

PARTY NO. 62  
ENERGY SOURCE AQUAPULSE  
FILTER 10-80 HZ  
CABLE 1600 m.  
GEOPHONES 32 CRYSTAL ELEMENT  
TAPERED ARRAY  
LEAD IN 760'  
AMPLIFIER RECORD BINARY GAIN  
CHARGE SIZE 4 GUNS POP  
DATE SHOT AUGUST 1988

PROCESSING INFORMATION

DECONVOLUTION  
SAMPLE RATE 2 ms  
DECONVOLVED BEFORE STACK  
AUTO CORR. INT. TIME VARIANT  
MAX. APERTURE 0-500 m.  
TIME ZONE 0-5 sec  
ITERATIONS 2

TIME VARIANT FILTER  
TIME ZONE Hz dB OCT Hz dB OCT  
0.000-0500 20 18 60 18  
0.500-0700 15 12 55 12  
0.700-1700 10 10 50 12  
1700-2400 10 12 35 12  
2400-5000 5 30 5

PROCESSING SEQUENCE  
(1) EDIT - (SUM & POP)  
(2) DECONVOLVED BEFORE STACK  
(3) NORMAL MOVE OUT  
(4) 1200 % STACK  
(5) TIME VARIANT FILTER  
(6) PLAYBACK (UNFILTERED)  
\* = VELOCITY ANALYSIS  
REFL. NO. 73 191  
DATE JANUARY 1989

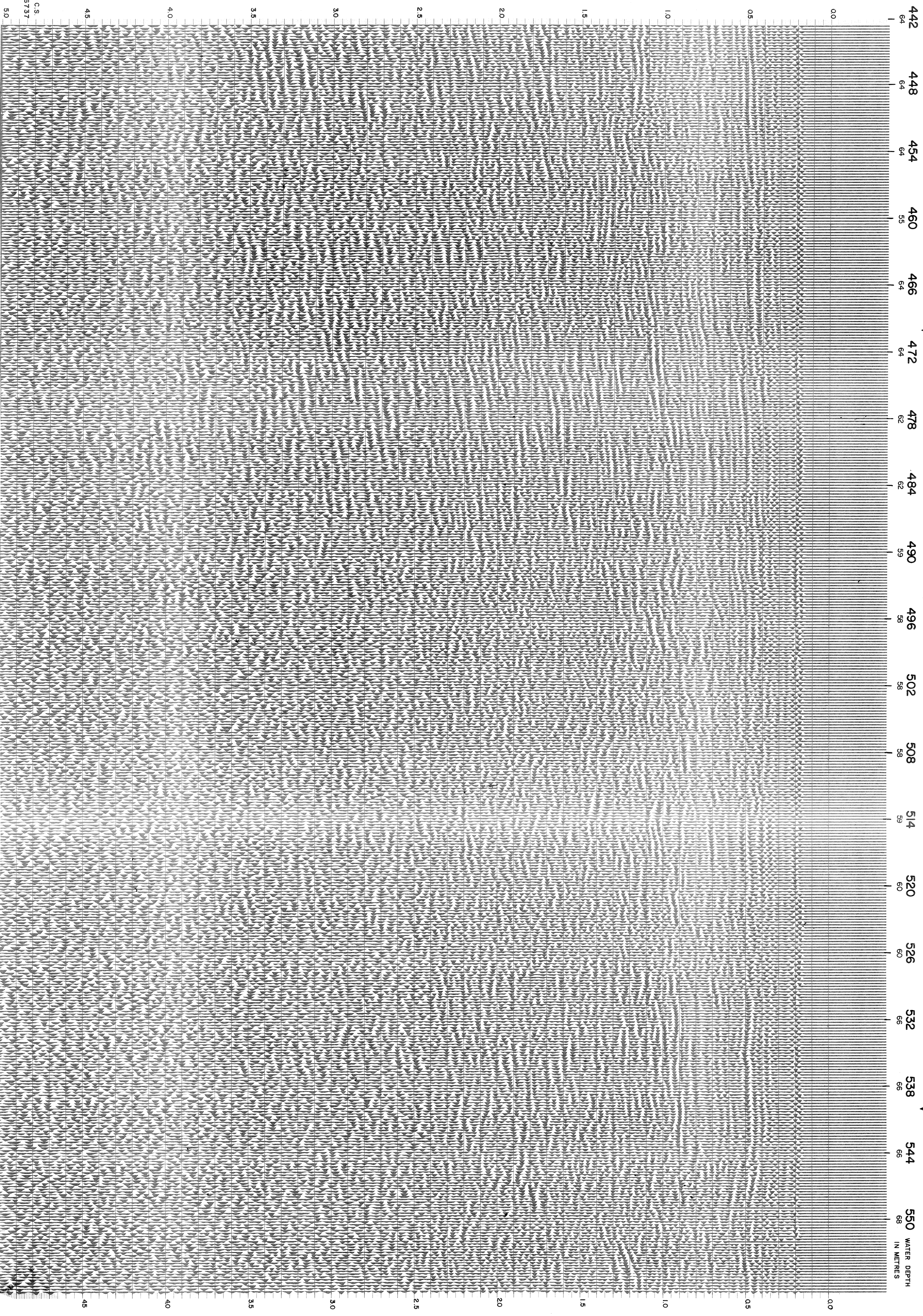
VELOCITY CHANGE

INTERSECTION  
LINE S.P.  
C-513 1094

Y C-1A

M-ITSI 5206

SOUTHWEST



CS  
6737

4.5

4.0

3.5

3.0

2.5

2.0

1.5

1.0

0.5

0.0

442

64

448

64

454

64

460

64

466

64

472

62

478

62

484

62

490

59

496

38

502

38

508

38

514

59

520

60

526

60

532

66

538

66

544

66

550

68

WATER DEPTH  
IN METRES

0.0

0.5

1.0

1.5

2.0

2.5

3.0

3.5

4.0

4.5