



THE AQUAPULSE SYSTEM

LINE: C-1038

S.P. 449 to S.P. 557

DATUM PLANE: SEA LEVEL

NORTH H. 31



AREA: LAMPEDUSA

PROSPECT: ZONE "C"

WESTERN GEOPHYSICAL  
DIVISION OF LITTON INDUSTRIES  
MILAN DIGITAL CENTER

RECORDING DATA

PARTY NO. 62  
ENERGY SOURCE AQUAPULSE  
FILTER 10-80 HZ  
CABLE 1600 m.  
GEOPHONES 32 CRYSTAL ELEMENT  
TAPERED ARRAY  
LEAD IN 760'

PROCESSING INFORMATION

DECONVOLUTION  
SAMPLE RATE 2 ms.  
TIME VARIANT FILTER  
L.C. H.C.  
TIME ZONE Hz DB OCT Hz DB OCT  
0.00-0.350 20 18 60 18  
0.350-0.800 15 12 55 12  
0.800-1.500 10 12 50 12  
1.500-2.000 10 12 35 12  
2.000-5.000 5 6 30 6

PROCESSING SEQUENCE

1) EDIT - (SUM 3 POPS)  
2) DECONVOLVED BEFORE STACK  
3) NORMAL MOVE OUT  
4) 1200 % STACK  
5) TIME VARIANT FILTER  
6) PLAYBACK (UNFILTERED)  
7) VELOCITY ANALYSIS  
REEL NO. 71 981  
DATE NOVEMBER 1988

VELOCITY CHANGE

M-ITSI 5205

M-ITSI 5206

VELOCITY CHA

M-ITSI 5112

VELOCITY CHANGE

M-ITSI 5206

VELOCITY CHANGE

M-ITSI 5206

INTERSECTION

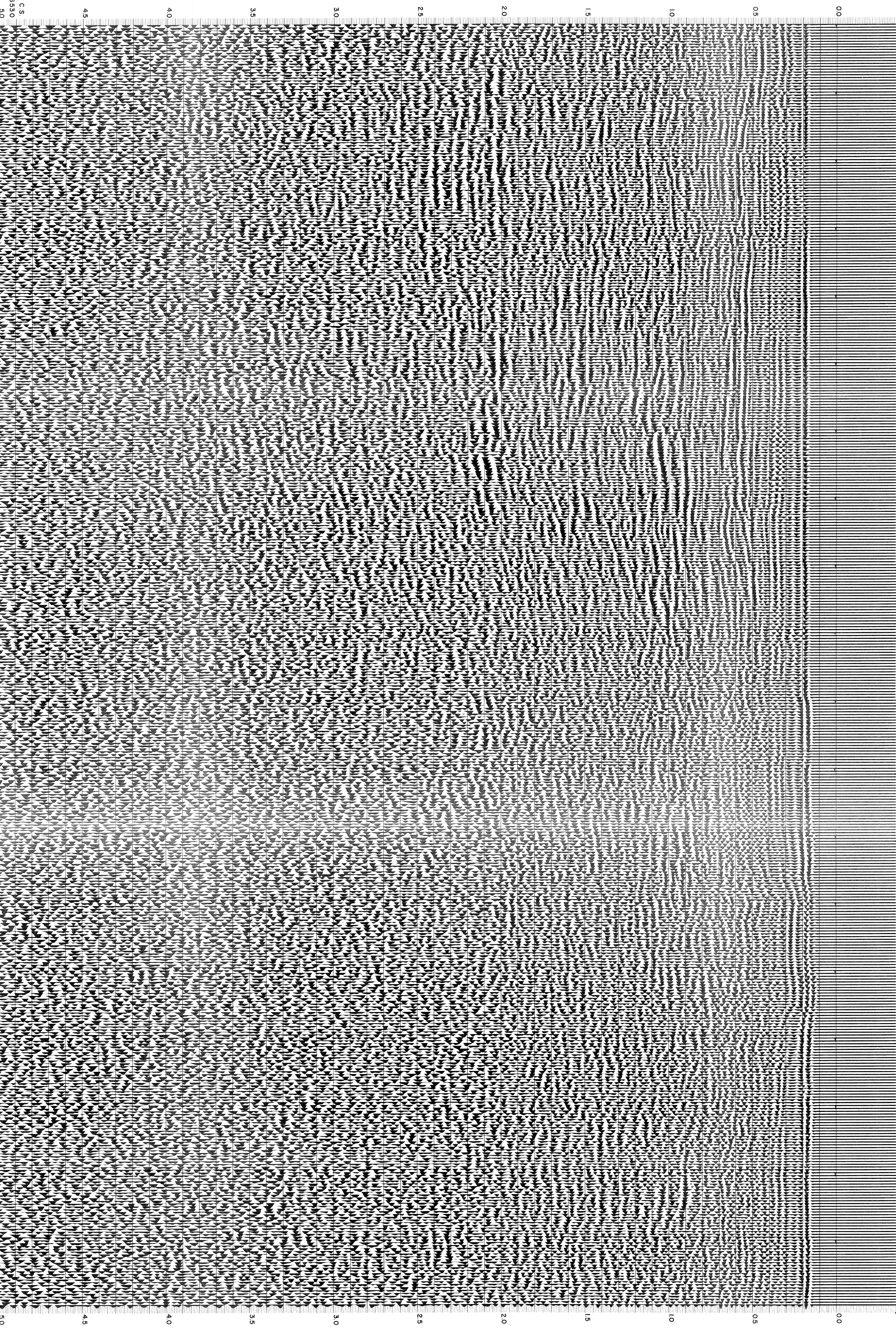
LINE C-315  
S.P. 943

M-ITSI 5205

VELOCITY CHANGE

M-ITSI 5206

WATER DEPTH 449 455 461 467 473 479 485 491 497 503 509 515 521 527 533 539 545 551 557  
IN METRES 69 70 73 73 70 69 69 69 66 64 64 62 48 51 60 68 71 73 75



C.S.  
6930  
50

45

40

35

30

25

20

15

10

05

00

50

45

40

35

30

25

20

15

10

05

00