

THE AQUAPULSE SYSTEM

AGIP

AREA : LAMPEDUSA

PROSPECT : ZONE "C"

WESTERN
GEOPHYSICAL
DIVISION OF OIL AND GAS
MILAN DISTRICT CENTER

LINE : C-1038

S.P. 221 to S.P. 329

DATUM PLANE : SEA LEVEL

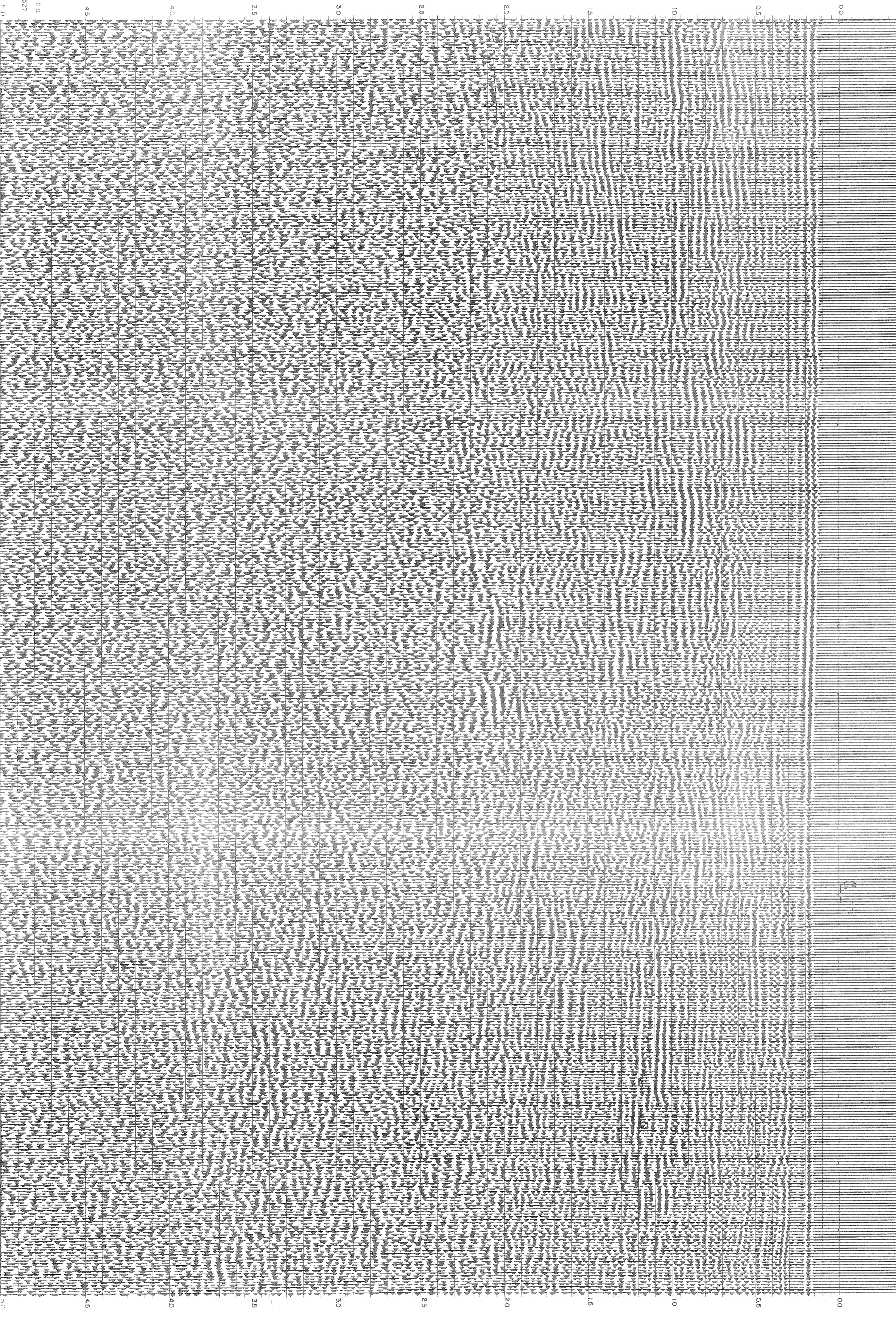
NORTHEAST

RECORDING DATA		PROCESSING INFORMATION		PROCESSING SEQUENCE	
PARTY NO. 62	AQUAPULSE	SAMPLE RATE 2 ms		1) EDIT - (SUM 3 POPS)	
ENERGY SOURCE 10-80 HZ	1600 m.	DECONVOLUTION		2) DECONVOLVED BEFORE STACK	
CABLE GEOPHONES 32 CRYSTAL ELEMENT	TAPERED ARRAY	DECONVOLVED BEFORE STACK		3) NORMAL MOVE OUT	
LEAD IN 760'	AMPLIFIER RECORD BINARY GAIN	TIME VARIANT FILTER		4) 1200 % STACK	
CHARGE SIZE 4 GUNS POP	DATE SHOT AUGUST 1968	TIME VARIANT FILTER		5) TIME VARIANT FILTER	
		L.C. H.C.		6) PLAYBACK (UNFILTERED)	
		TIME VARIANT		7) VELOCITY ANALYSIS	
		AUTO CORR. INT. TIME VARIANT			
		MAX. APERTURE 0-800' ms			
		TIME ZONE 0-5 Sec			
		ITERATIONS 3			
		TIME ZONE Hz dB OCT Hz dB OCT			
		0.00-0.350 20 18 60 50 18			
		0.350-0.800 15 12 50 50 12			
		0.800-1.600 10 10 50 50 12			
		1.600-2.000 10 10 35 35 12			
		2.000-3.000 5 5 30 30 6			
		REEL NO. 7319			
		DATE NOVEMBER 1968			

M-ITS¹ 5205

INTERSECTION
LINE S.P.
C-515 507

WATER DEPTH IN METRES 221 227 233 239 245 251 257 263 269 275 281 287 293 299 305 311 317 323 329



5.0

5.0

4.5

4.5

4.0

4.0

3.5

3.5

3.0

3.0

2.5

2.5

2.0

2.0

1.5

1.5

1.0

1.0

0.5

0.5

0.0

0.0

0.0

0.0

0.0

0.0

0.0

0.0

0.0

0.0

0.0

0.0

0.0

0.0

0.0

0.0

0.0

0.0

0.0

0.0

0.0

0.0

0.0

0.0

0.0

0.0

0.0

0.0

0.0

0.0

0.0

0.0

0.0

0.0

0.0

0.0

0.0

0.0

0.0

0.0

0.0

0.0

0.0

0.0

0.0

0.0

0.0

0.0

0.0

0.0

0.0

0.0

0.0

0.0

0.0

0.0

0.0

0.0

0.0

0.0

0.0

0.0

0.0

0.0

0.0

0.0

0.0

0.0

0.0

0.0

0.0

0.0

0.0

0.0

0.0

0.0

0.0

0.0

0.0

0.0

0.0

0.0

0.0

0.0

0.0

0.0

0.0

0.0

0.0

0.0

0.0

0.0

0.0

0.0

0.0

0.0

0.0

0.0

0.0

0.0

0.0

0.0

0.0

0.0

0.0

0.0

0.0

0.0

0.0

0.0

0.0

0.0