



THE AQUAPULSE SYSTEM

LINE: C-1036

S.P. 449 to S.P. 557

DATUM PLANE: SEA LEVEL

AGIP

AREA: LAMPEDUSA

PROSPECT: ZONE "C"

WESTERN
GEOPHYSICAL
MILAN DIGITAL CENTER

RECORDING DATA

PARTY NO. 82
ENERGY SOURCE AQUAPULSE
FILTER 10-80 HZ
CABLE 1600 m
GEOPHONES 32 CRYSTAL ELEMENT
TAPERED ARRAY
LEAD IN 760
AMPLIFIER RECORD BINARY GAIN
CHANGE SIZE 4 GUNS POP
DATE SHOT AUGUST 1988

PROCESSING INFORMATION

DECONVOLUTION
SAMPLE RATE 2 ms
DECONVOLVED BEFORE STACK
AUTO CORR INT TIME VARIANT
MAX APERTURE 0.870 m/s
TIME ZONE 0-5 Sec
ITERATIONS 3

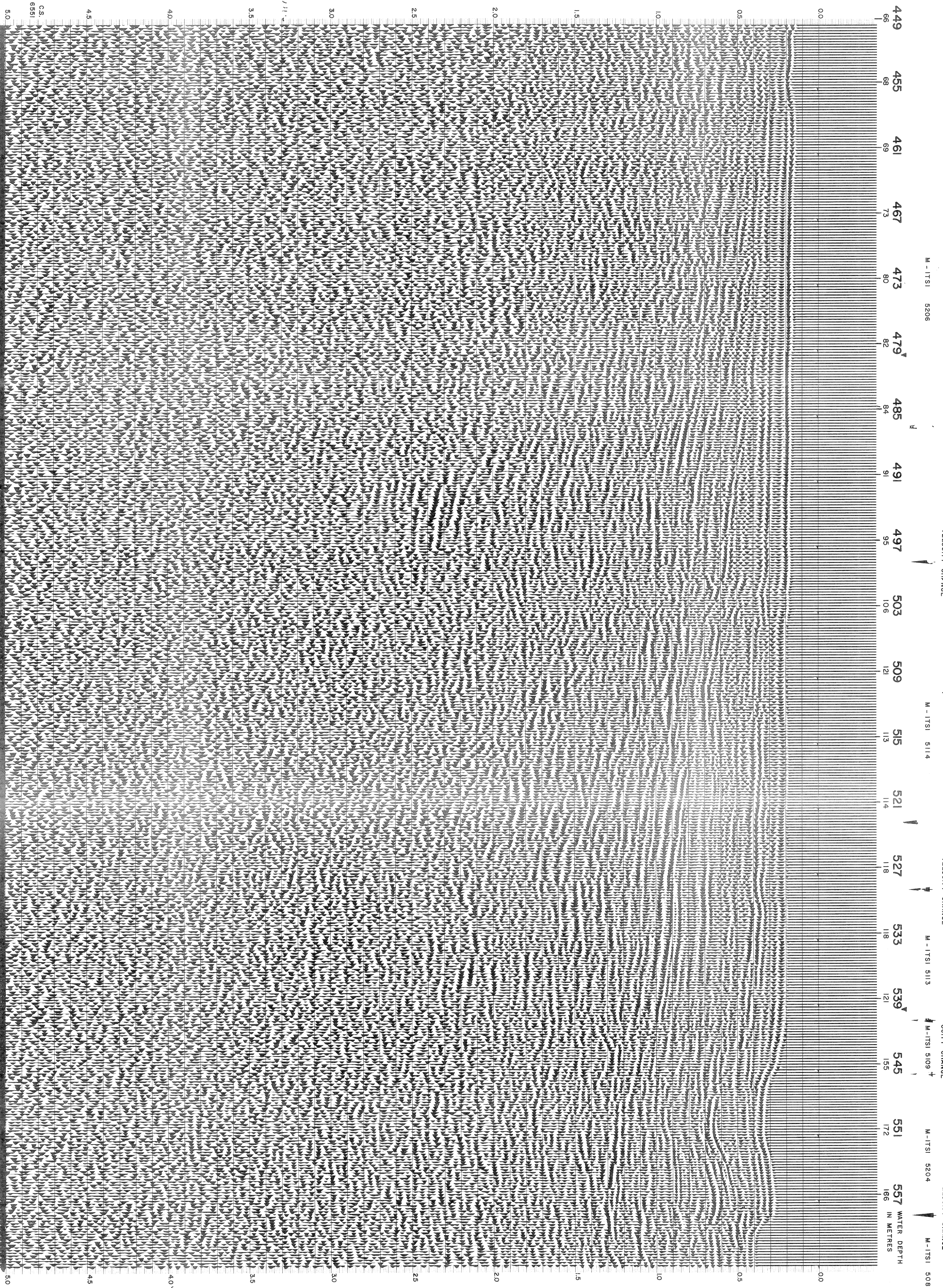
TIME VARIANT FILTER table with columns for L.C., H.C., and time zones (0100-0300, 0300-0500, 0500-1200, 1200-1800, 1800-5000).

PROCESSING SEQUENCE

- 1) EDIT (SUM 3 PGS)
2) DECONVOLVED BEFORE STACK
3) NORMAL MOVE OUT
4) 1200 % STACK
5) TIME VARIANT FILTER
6) PLAYBACK (UNFILTERED)
7) VELOCITY ANALYSIS

REEL NO. 7.323
DATE NOVEMBER 1988

SOUTHWEST



M-ITSI 5206

M-ITSI 5206

M-ITSI 5206

M-ITSI 5206

M-ITSI 5206

M-ITSI 5206

M-ITSI 5206

M-ITSI 5206

M-ITSI 5206

M-ITSI 5206

M-ITSI 5206

M-ITSI 5206

M-ITSI 5206

M-ITSI 5206

M-ITSI 5206

M-ITSI 5206

M-ITSI 5206

M-ITSI 5206

M-ITSI 5206

M-ITSI 5206

M-ITSI 5206

M-ITSI 5206

M-ITSI 5206

M-ITSI 5206

M-ITSI 5206

M-ITSI 5206

M-ITSI 5206

M-ITSI 5206