

THE AQUAPULSE SYSTEM

LINE: C-1036

S.P. 335 to S.P. 443

DATUM PLANE: SEA LEVEL

AGIP

AREA: LAMPEDUSA

PROSPECT: ZONE "C"

WESTERN  
GEOPHYSICAL  
DIVISION OF LITTON INDUSTRIES  
MILAN DIGITAL CENTER

RECORDING DATA

PARTY NO. 62  
ENERGY SOURCE AQUAPULSE  
FILTER 10-80 HZ  
CABLE 1600 m  
GEOPHONES 32 CRYSTAL ELEMENT  
LEAD IN TAPERED ARRAY  
LEAD IN 1760'  
AMPLIFIER RECORD BINARY GAIN  
CHARGE SIZE 4 QUINS POP  
DATE SHOT AUGUST 1988

PROCESSING INFORMATION

SAMPLE RATE 2 ms

DECONVOLUTION

DECONVOLVED BEFORE STACK

AUTO CORR. INT. TIME VARIANT  
MAGNITUDE 0.600 m/s  
TIME ZONE 0-5 Sec  
ITERATIONS 3

TIME VARIANT FILTER

L.C. H.C.  
TIME ZONE Hz dB OCT Hz dB OCT  
0.00-0.300 20 18 60 18  
0.300-0.500 15 12 50 12  
0.500-1.000 10 12 50 12  
1.000-1.800 10 12 35 12  
1.800-5.000 5 6 30 6

PROCESSING SEQUENCE

- 1) EDIT - (SUM 3 POP'S)
- 2) DECONVOLVED BEFORE STACK
- 3) NORMAL MOVE OUT
- 4) 1200 % STACK
- 5) TIME VARIANT FILTER
- 6) PLAYBACK (UNFILTERED)
- 7) VELOCITY ANALYSIS

REEL NO. 73213  
DATE NOVEMBER 1989

INTERSECTION  
LINE S.P.  
C-1033 521

M-LTSI 5205

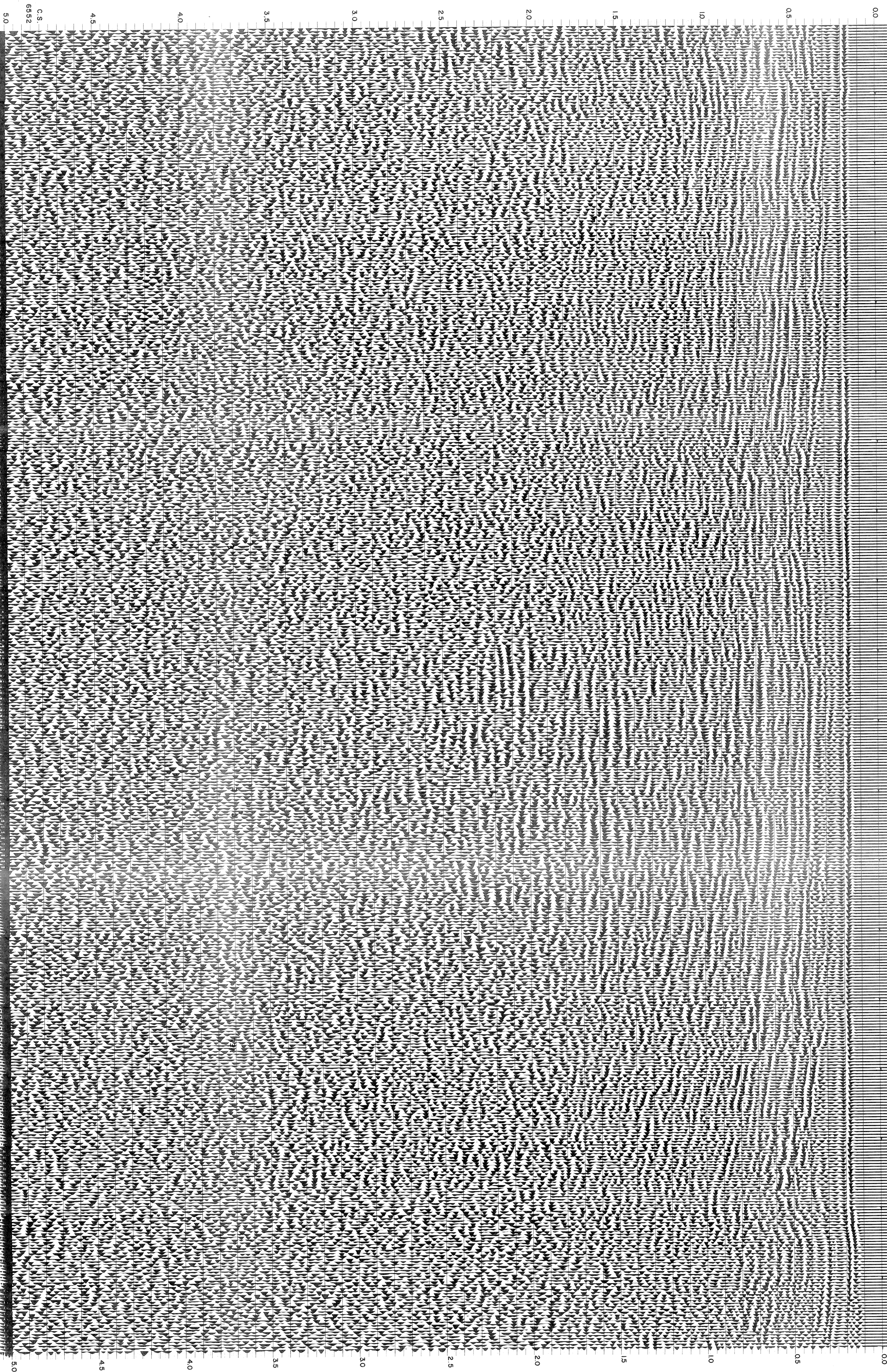
VELOCITY CHANGE

M-LTSI 5206

INTERSECTION  
LINE S.P.  
C-1031 582

SOUTHWEST

335 341 347 353 359 365 371 377 383 389 395 401 407 413 419 425 431 437 443 WATER DEPTH  
69 69 68 66 68 69 66 66 66 66 66 66 66 68 68 68 64 60 57 IN METRES



C.S.  
6952

5.0

4.5

4.0

3.5

3.0

2.5

2.0

1.5

1.0

0.5

0.0

5.0

4.5

4.0

3.5

3.0

2.5

2.0

1.5

1.0

0.5

0.0