

THE AQUAPULSE SYSTEM

LINE: C-1036

S.P. 221 to S.P. 329

DATUM PLANE: SEA LEVEL



AREA:

LAMPEDUSA

PROSPECT: ZONE "C"

WESTERN
GEOPHYSICAL
AMMAN DIGITAL CENTER

RECORDING DATA

PARTY NO. 62
ENERGY SOURCE AQUAPULSE
FILTER 10-80 HZ
CABLE 1600 m
GEOPHONES 32 CRYSTAL ELEMENT
TAPERED ARRAY
LEAD IN 750'
AMPLIFIER RECORD BINARY GAIN
CHARGE SIZE 4 GUNS POP
DATE SHOT AUGUST 1968

PROCESSING INFORMATION

DECONVOLUTION
DECONVOLVED BEFORE STACK
TIME VARIANT FILTER
TIME ZONE Hz dB OCT Hz dB OCT
L.C. H.C.
0.100-0.300 20 18 60 18
0.300-0.500 15 12 50 12
0.500-1.200 10 12 50 12
1.200-1.800 10 12 35 12
1.800-5.000 5 30 6

PROCESSING SEQUENCE

1) EDIT - (SOL 3 POPS)
2) DECONVOLVED BEFORE STACK
3) NORMAL MOVE OUT
4) 1200 % STACK
5) TIME VARIANT FILTER
6) FLIPBACK (UNFILTERED)
7) VELOCITY ANALYSIS
REEL NO. 73, 213
DATE NOVEMBER 1, 1968

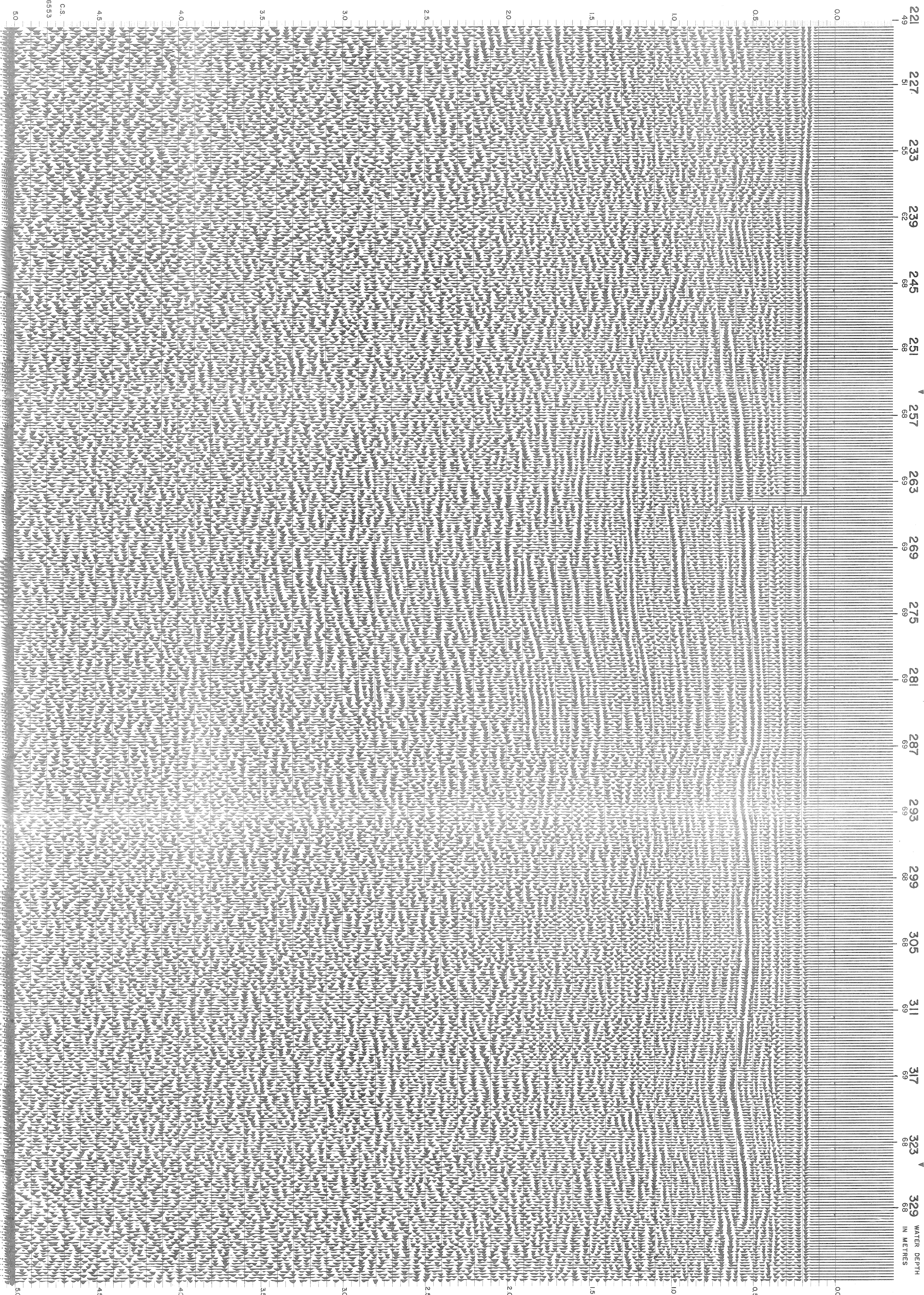
M-1 TSI 5206

VELOCITY CHANGE

M-1 TSI 5205

INTERSECTION
LINE S.P.
C-515 440

SOUTHWEST



WATER DEPTH
IN METRES