



THE AQUAPULSE SYSTEM

LINE: C-1033

S.P. 640 to S.P. 766

DATUM PLANE: SEA LEVEL

SOUTHEAST

M - 1T51 5181

AGIP

AREA: LAMPEDUSA

PROSPECT: ZONE "C"

WESTERN  
GEOPHYSICAL LTD.  
1111 17th St. N.W.  
CALGARY, ALBERTA  
T2M 0P8 CANADA

RECORDING DATA

PARTY NO. 82  
EMERGENCY SOURCE AQUAPULSE  
CABLE 10-80 MZ  
GEOPHONES 32 CRYSTAL ELEMENT  
LEAD IN 760'  
AMPLIFIER RECORD BINARY GAIN  
CHANGE SIZE 4 GUNS POP  
DATE SHOT AUGUST 1988

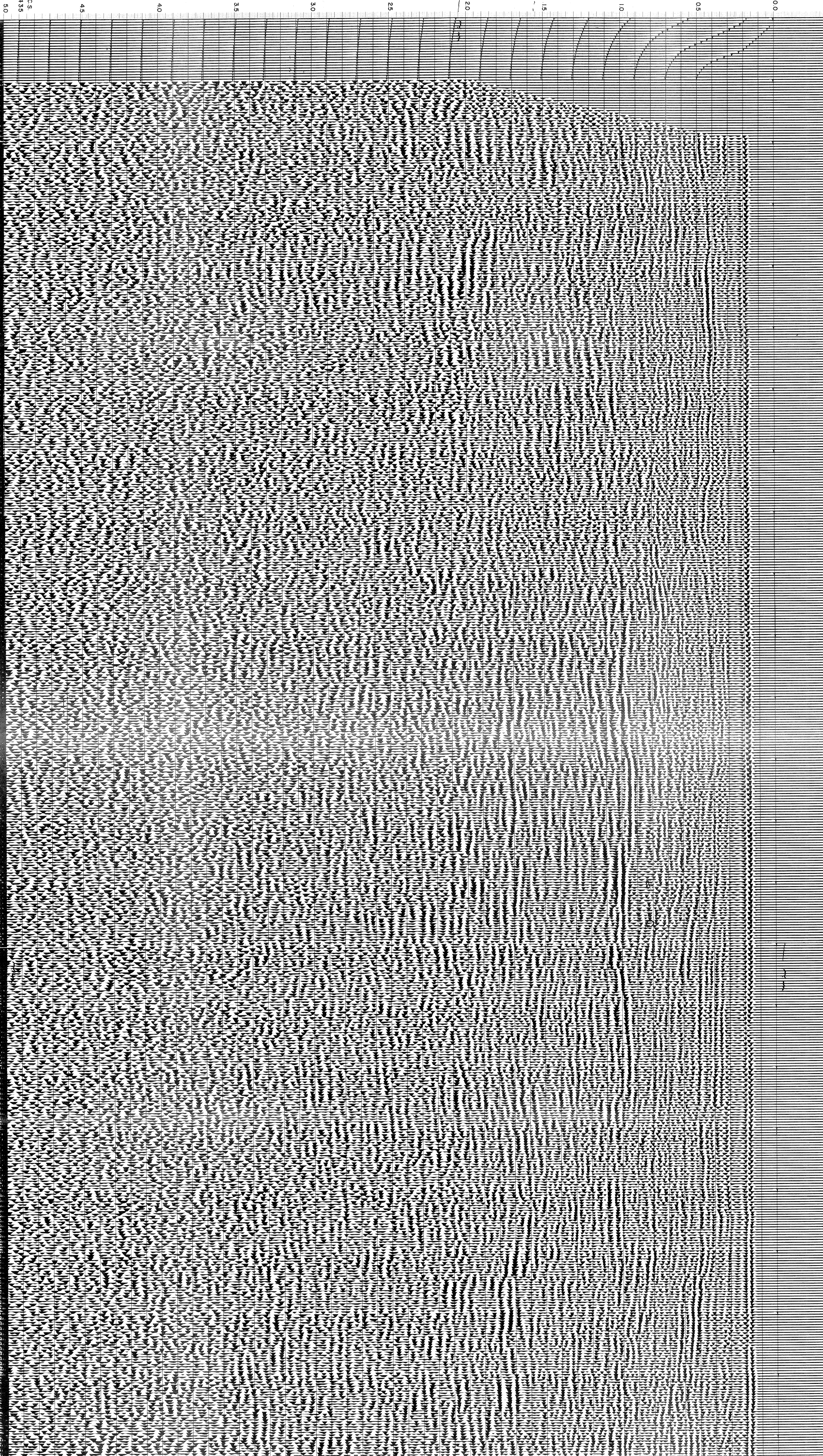
PROCESSING INFORMATION

DECONVOLUTION  
SAMPLE RATE 2 ms  
TIME VARIANT FILTER  
TIME ZONE Hz dB OCT Hz dB OCT  
L.C. H.C.  
0.000-0.350 20 18 60 18  
0.350-0.800 15 12 50 12  
0.800-1.400 10 12 30 12  
1.400-2.000 10 12 20 12  
2.000-3.000 5 5 20 6

PROCESSING SEQUENCE

(1) EDIT - (SUM 3 POS)  
(2) DECONVOLVED BEFORE STACK  
(3) NORMAL MOVE OUT  
(4) 1200 % STACK  
(5) TIME VARIANT FILTER  
(6) PLAYBACK (UNFILTERED)  
(7) VELOCITY ANALYSIS  
REEL NO. 71 860  
DATE NOVEMBER 1988

WATER DEPTH IN METRES 640 646 652 658 664 670 676 682 688 694 700 706 712 718 724 730 736 742 748 754 760 766



INTERSECTION  
LINE S.P.  
C-516 363

INTERSECTION  
LINE S.P.  
C-040 360

VELOCITY CHANGE