

THE AQUAPULSE SYSTEM

LINE: C-1033

S.P. 328 to S.P. 430

DATUM PLANE: SEA LEVEL

AGIP

AREA: LAMPEDUSA

PROSPECT: ZONE "C"

WESTERN
GEOPHYSICAL
DIVISION OF OIL AND GAS
MILANO DIGITAL CENTER

RECORDING DATA

PARTY NO. 62
ENERGY SOURCE AQUAPULSE
FILTER 10-80 HZ
CABLE 1600 m
GEOPHONES 32 CRYSTAL ELEMENT
TAPERED ARRAY
LEAD IN 780'
AMPLIFIER RECORD BINARY GAIN
CHANGE SIZE 4 GUNS POP
DATE SHOT AUGUST 1988

PROCESSING INFORMATION

SAMPLE RATE 2 ms

DECONVOLUTION

AUTO CORR. INT. TIME VARIANT
MAX. APERTURE 0.600 m
TIME ZONE 0-9 sec
ITERATIONS 2

TIME VARIANT FILTER

TIME ZONE Hz DB OCT Hz DB OCT

L.G.	H.C.
0.100-0.400	20 18 50 18
0.400-0.800	15 12 55 12
0.800-1.600	10 12 50 12
1.600-3.200	10 12 35 12
3.200-6.400	5 8 30 8

PROCESSING SEQUENCE

- 1) EDIT - (GUNS & POPS)
- 2) DECONVOLVED BEFORE STACK
- 3) NORMAL MOVE OUT
- 4) 1200 % STACK
- 5) TIME VARIANT FILTER
- 6) PLAYBACK (UNFILTERED)
- 7) VELOCITY ANALYSIS

REEL NO. 73.1120
DATE NOVEMBER 1988

NORTHWEST

M-ITSI 5092

OCT 7 CHANGE

M-ITSI 5132

VELOCITY CHANGE

M-ITSI 5113

VELOCITY CH. 25

M-ITSI 5112

VELOCITY CHANGE

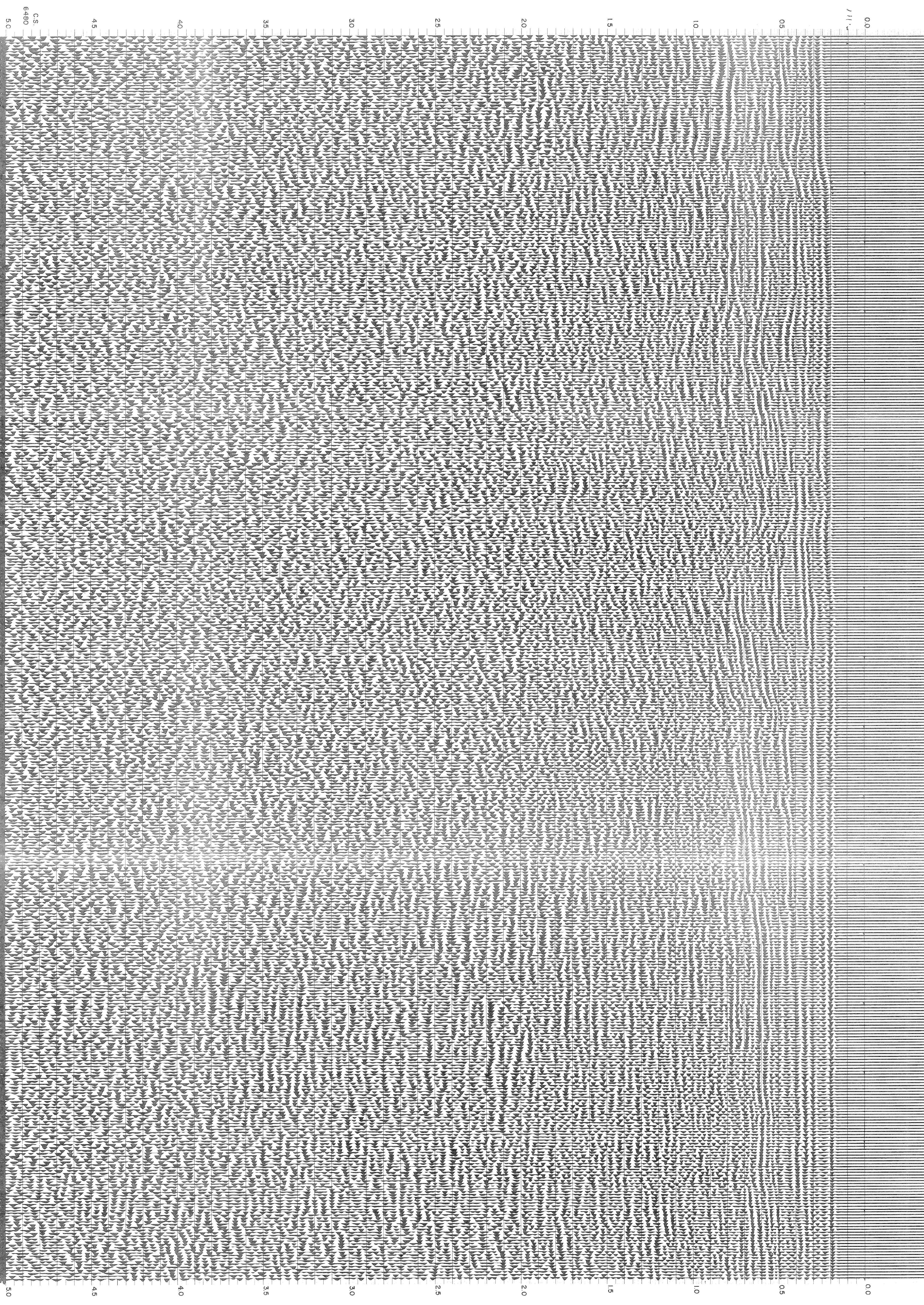
M-ITSI 5206

VELOCITY CHANGE

M-ITSI 5205

328 157 334 147 340 143 346 115 352 108 358 112 364 112 370 110 376 106 382 93 388 93 394 104 400 91 406 91 412 91 418 90 424 86 430 84

WATER DEPTH
IN METRES



50 45 40 35 30 25 20 15 10 05 00