



THE AQUAPULSE SYSTEM

LINE: C-1031

S.P. 616 to S.P. 742D

DATUM PLANE: SEA LEVEL

AGIP AREA: LAMPEDUSA

PROSPECT: ZONE "C"

WESTERN  
GEOLOGICAL  
MILAN DIGITAL CENTER

RECORDING DATA

BARTY NO. 82  
ENERGY SOURCE AQUAPULSE  
FILTER 10-80 HZ  
CABLE 1600 m  
GEOPHONES 32 CRYSTAL ELEMENT  
TAPERED ARRAY  
LEAD IN 760  
AMPLIFIER RECORD BINARY GAIN  
CHARGE SIZE 4 GUNS POP  
DATE SHOT AUGUST 1988

PROCESSING INFORMATION

DECONVOLUTION  
SAMPLE RATE 2 sec  
TIME VARIANT FILTER  
L.C. H.C.  
TIME ZONE Hz dB OCT Hz dB OCT  
0.000-0.350 20 18 50 18  
0.350-0.700 15 12 55 12  
0.700-1.400 10 10 50 12  
1.400-2.000 5 10 35 12  
2.000-5000 5 6 30 6

PROCESSING SEQUENCE

(1) EDIT - (SUM 3 POPS)  
(2) DECONVOLVED BEFORE STACK  
(3) NORMAL MOVE OUT  
(4) 1200 % STACK  
(5) TIME VARIANT FILTER  
(6) PLAYBACK (UNFILTERED)  
VELOCITY ANALYSIS  
REEL NO. 7335-7330  
DATE DECEMBER 1988

FILE: 04.001

INTERSECTION  
LINE S.P.  
C-1038 436

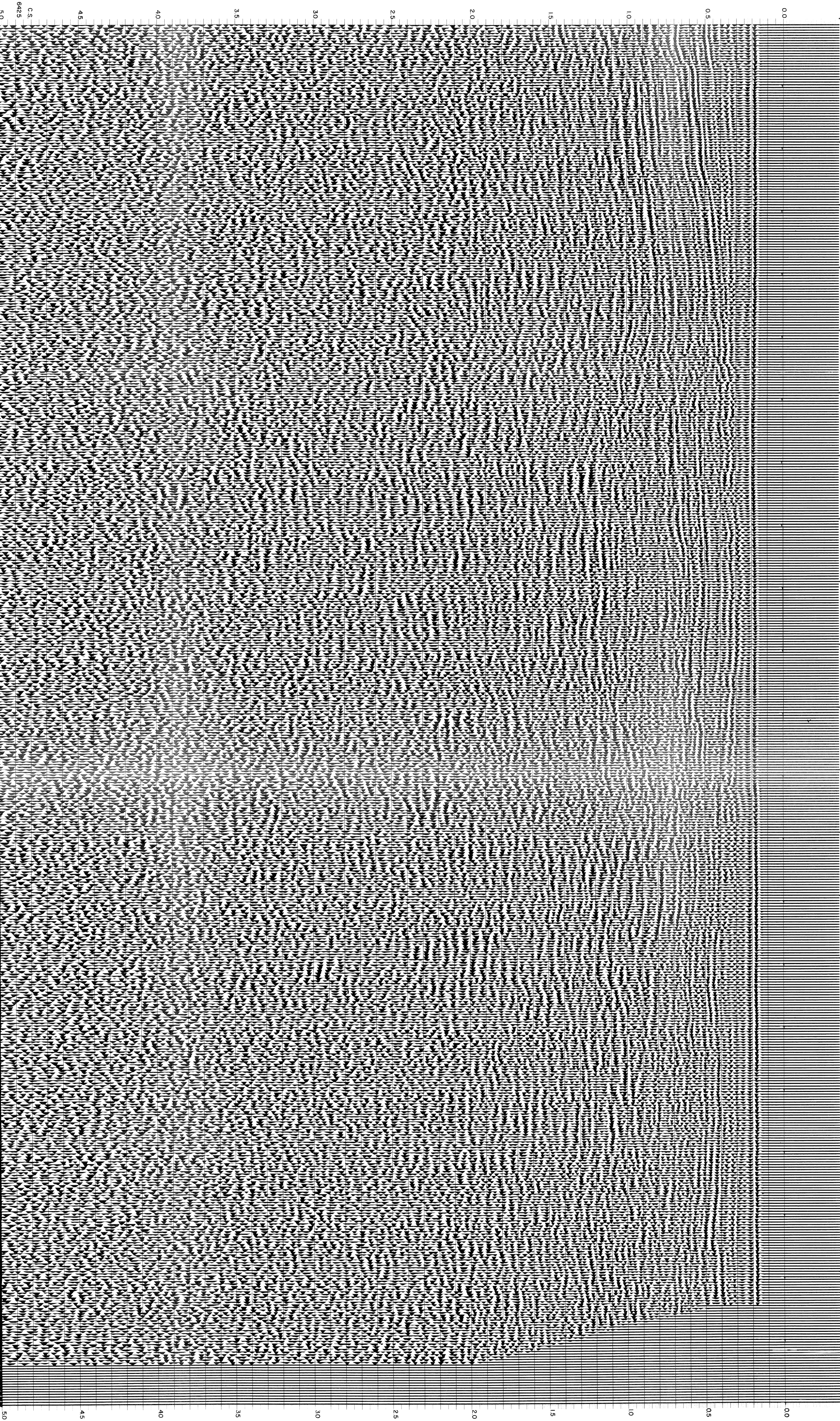
M - ITSI 5205

INTERSECTION  
LINE S.P.  
C-518 437

VELOCITY C. -E  
M - ITSI 5181

616 622 628 634 640 646 652 658 664 670 676 682 688 694 700 706 712 718 724 730 736 742D

WATER DEPTH  
IN METRES



0.0  
0.5  
1.0  
1.5  
2.0  
2.5  
3.0  
3.5  
4.0  
4.5  
5.0