



THE AQUAPULSE SYSTEM

LINE: C-1031

S.P. 490 to S.P. 610

DATUM PLANE: SEA LEVEL

M-ITSI 5205

INTERSECTION  
LINE S.P.  
C-516 387

M-ITSI 5181-1

INTERSECTION  
LINE S.P.  
C-1035 438

M-ITSI 5181

M-ITSI 5205

E



AREA: LAMPEDUSA

PROSPECT: ZONE "C"

WESTERN  
GEOPHYSICAL  
DIVISION OF BETHCO INCORPORATED  
MILAN DIGITAL CENTER

RECORDING DATA

PARTY NO. 62  
ENERGY SOURCE AQUAPULSE  
FILTER 10-80 HZ  
CABLE 1600 m.  
GEOPHONES 32 CRYSTAL ELEMENT  
TAPERED ARRAY  
LEAD IN 760'

PROCESSING INFORMATION

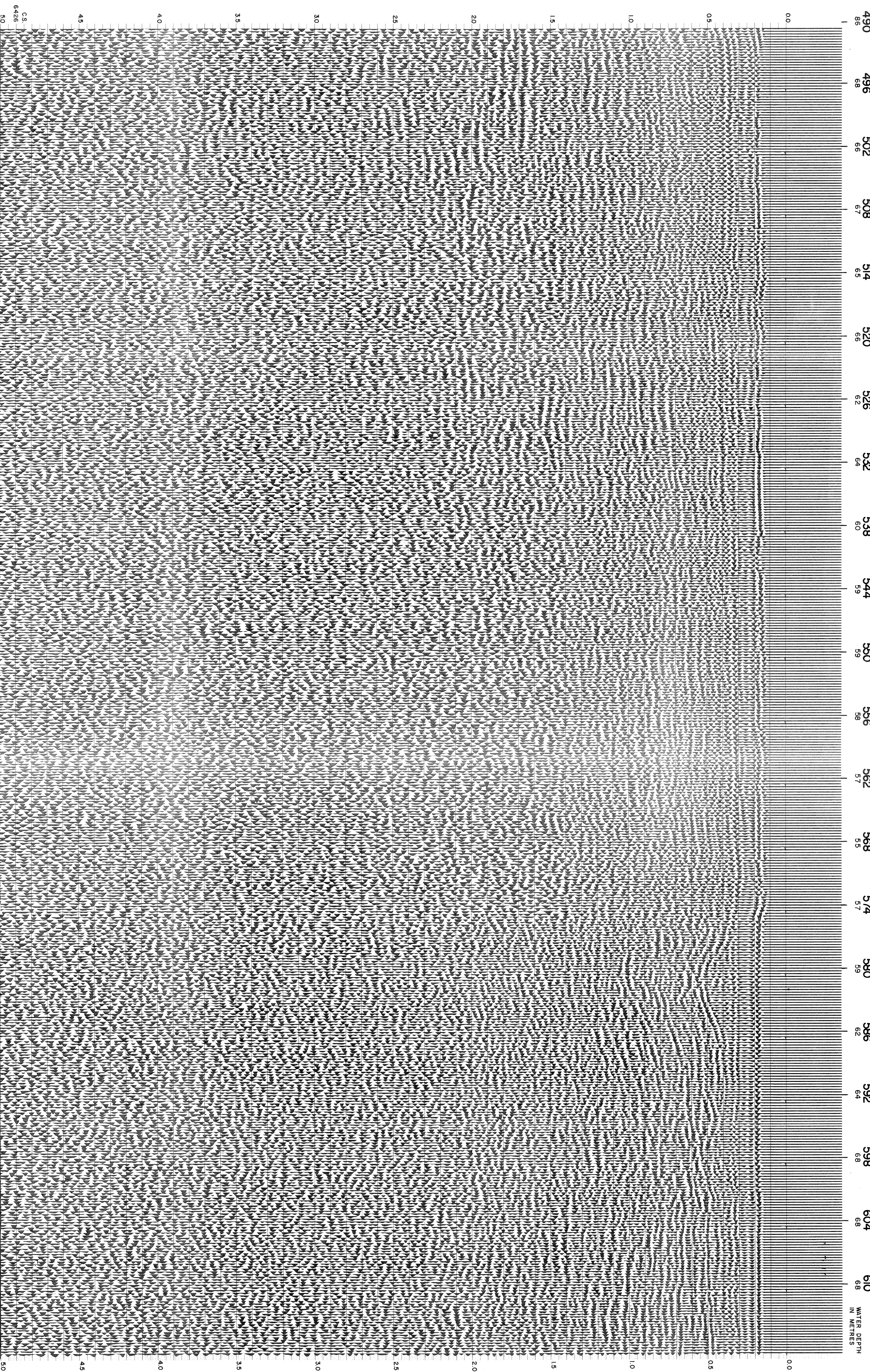
DECONVOLUTION  
SAMPLE RATE 2 ms  
DECONVOLVED BEFORE STACK  
AUTO CORR. INT. TIME VARIANT  
MAX. APERTURE 0-800 m.s.  
TIME ZONE 0-3 Sec  
ITERATIONS 2

TIME ZONE	L.C.	H.C.
Hz	dB	OCT Hz
dB/OCT	Hz	dB/OCT
0.00-0.350	20	18
0.350-0.700	19	12
0.700-1.400	10	12
1.400-2.800	10	12
2.800-5.600	9	6
	6	30
	6	6

PROCESSING SEQUENCE

(1) EDIT - (SUM 3 POPS)  
(2) DECONVOLVED BEFORE STACK  
(3) NORMAL MOVE OUT  
(4) 1200 % STACK  
(5) TIME VARIANT FILTER  
(6) PLAYBACK (UNFILTERED)  
\* VELOCITY ANALYSIS  
REEL NO. 73 301  
DATE DECEMBER 1988

NORTHWEST



WATER DEPTH  
IN METRES