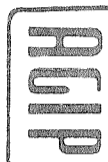


THE AQUAPULSE SYSTEM

LINE : C-1031

S.P. 364 to S.P. 484

DATUM PLANE : SEA LEVEL



AREA : LAMPEDUSA

PROSPECT : ZONE "C"

WESTERN  
GEOPHYSICAL  
MILAN DIGITAL CENTER

<b>RECORDING DATA</b>		<b>PROCESSING INFORMATION</b>		<b>PROCESSING SEQUENCE</b>	
PARTY NO. 62	AGAPULSE FILTER 10-80 HZ	SAMPLE RATE 2 ms		1) EDIT - (SUM & POPS)	
CABLE 1600 M	GEOPHONES 32 CRYSTAL ELEMENT TAPERED ARRAY	DECONVOLUTION		2) DECONVULVED BEFORE STACK	
LEAD IN 740	AMPLIFIER RECORD BINARY GAIN 4 GUNS POP	DECONVULVED BEFORE STACK		3) NORMAL MOVE OUT	
DATE SHOT AUGUST 1988	CHANGE SIZE 4 GUNS POP	TIME VARIANT FILTER		4) 1200 % STACK	
		TIME ZONE Hz DB OCT Hz DB OCT		5) TIME VARIANT FILTER (UNFILTERED)	
		L.C. H.C.		6) VELOCITY ANALYSIS	
		0 100 0 350	20 18 60 19	REEL NO 1330	
		0 350 0 700	15 12 55 12	DATE DECEMBER 1988	
		0 700 1400	10 12 50 12		
		1400 2 000	10 12 35 12		
		2 000 5 000	5 6 20 6		

VELOCITY CHANGE

M-ITSI 5004

M-ITSI 5113

VELOCITY CHANGE

M-ITSI 5061

VELOCITY CHANGE

M-ITSI 5061

VELOCITY CHANGE

M-ITSI 5113

VELOCITY CHANGE

M-ITSI 5113

VELOCITY CHANGE

M-ITSI 5010

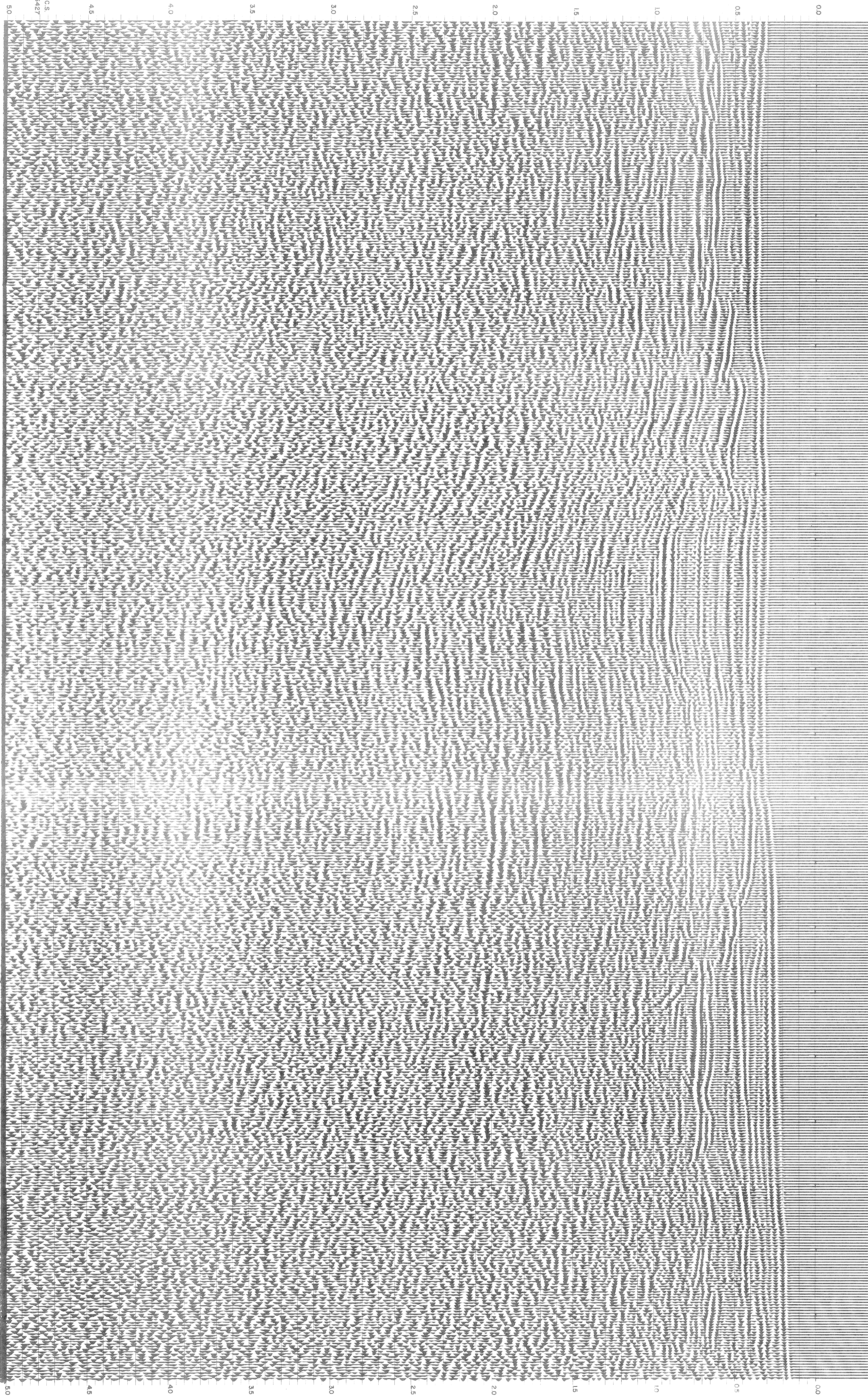
M-ITSI 5205

364 370 376 382 388 394 400 406 412 418 424 430 436 442 448 454 460 466 472 478 484

199 210 223 227 227 223 196 196 196 192 201 201 197 165 150 146 144 135 126 110 99

WATER DEPTH IN METRES

NORTHWEST



5.0 4.5 4.0 3.5 3.0 2.5 2.0 1.5 1.0 0.5 0.0

C.S. 6427