

THE AQUAPULSE SYSTEM

LINE: C-1027

S.P. 340 to S.P. 448

DATUM PLANE: SEA LEVEL



AREA: LAMPEDUSA

PROSPECT: ZONE "C"

WESTERN
GEO PHYSICAL
CORPORATION
MILWAUKEE, WISCONSIN
MILWAU DIGITAL CENTER

RECORDING DATA

PARTY NO. 62
ENERGY SOURCE AQUAPULSE
FILTER 10-80 HZ
CABLE 1600 m.
GEOPHONES 32 CRYSTAL ELEMENT
TAPERED ARRAY
LEAD IN 760'
AMPLIFIER RECORD BINARY GAIN
CHANGE SIZE 4 GUNS POP
DATE SHOT AUGUST 1968

PROCESSING INFORMATION

DECONVOLUTION
DECONVOLVED BEFORE STACK
AUTO CORR. INT. TIME VARIANT
MAX. APERTURE 0.500 m.s.
TIME ZONE 0-9 sec.
ITERATIONS 2

TIME ZONE	Hz	dB	OCT	Hz	dB	OCT
0.00 - 0.700	20	18	50	18	18	18
0.700 - 1.000	15	12	55	12	12	12
1.000 - 1.500	10	12	50	12	12	12
1.500 - 1.900	10	12	35	12	12	12
1.900 - 5.000	5	5	30	5	5	5

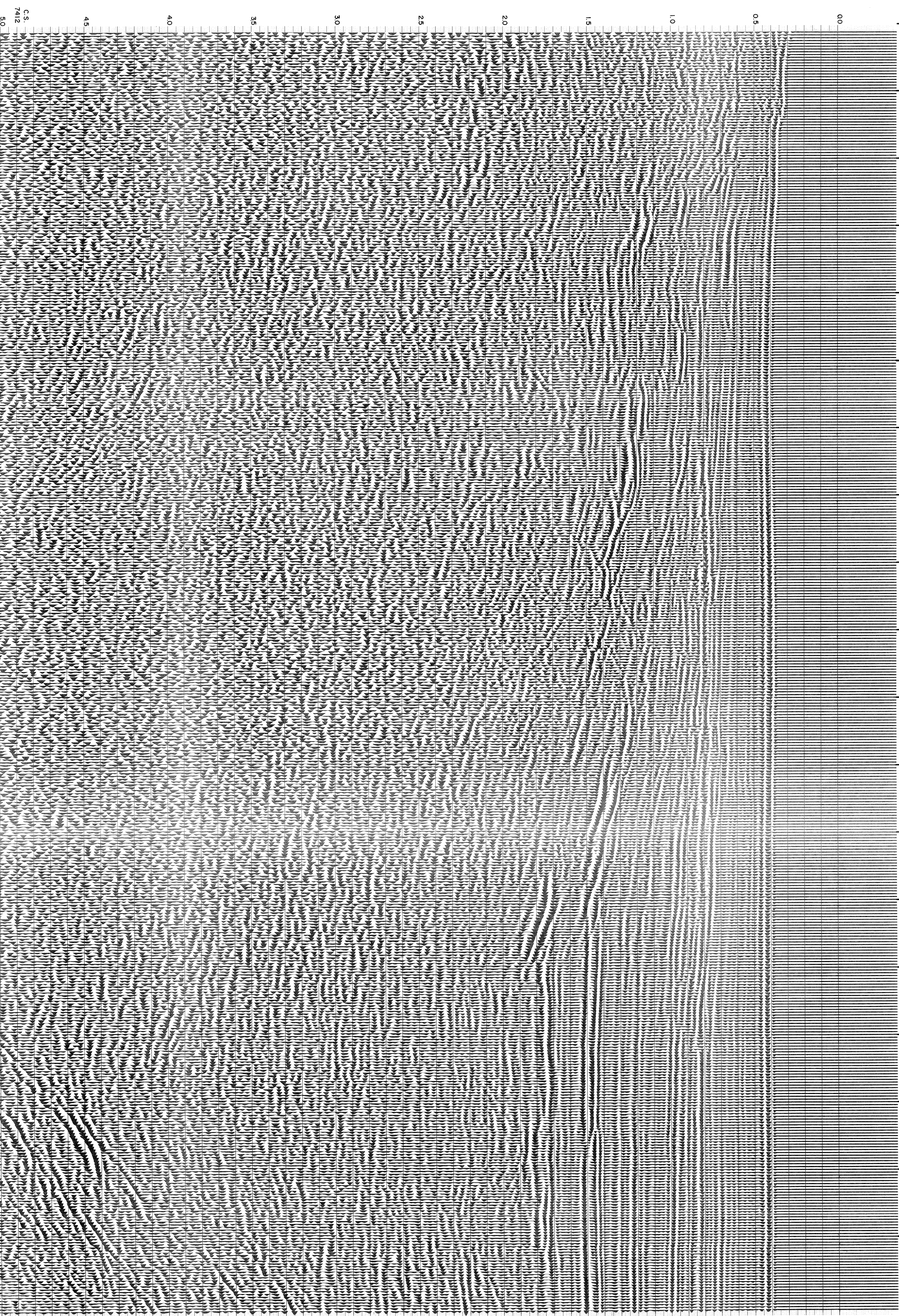
PROCESSING SEQUENCE

1) EDIT - (SUM 3 POPS)
2) DECONVOLVED BEFORE STACK
3) NORMAL MOVE OUT
4) 1200 1/8 STACK
5) TIME VARIANT FILTER
6) CHECK (ONALYS)
7) VELOCITY ANALYSIS
REEL NO. 73 120
DATE FEBRUARY 1969

NORTHWEST

M-ITSI 5092 VELOCITY CHANGE M-ITSI 5159 VELOCITY CHANGE M-ITSI 5084 VELOCITY CHANGE M-ITSI 5085 INTERSECTION TIME SP C-918 655 VELOCITY CHANGE M-ITSI 5094 VELOCITY CHANGE M-ITSI 5094 VELOCITY CHANGE M-ITSI 5083

340 346 352 358 364 370 376 382 388 394 400 406 412 418 424 430 436 442 448
165 208 230 241 252 254 254 249 245 245 245 247 249 252 254 254 254 256
WATER DEPTH IN METRES



0.5 1.0 1.5 2.0 2.5 3.0 3.5 4.0 4.5 5.0
C.S. 7412