

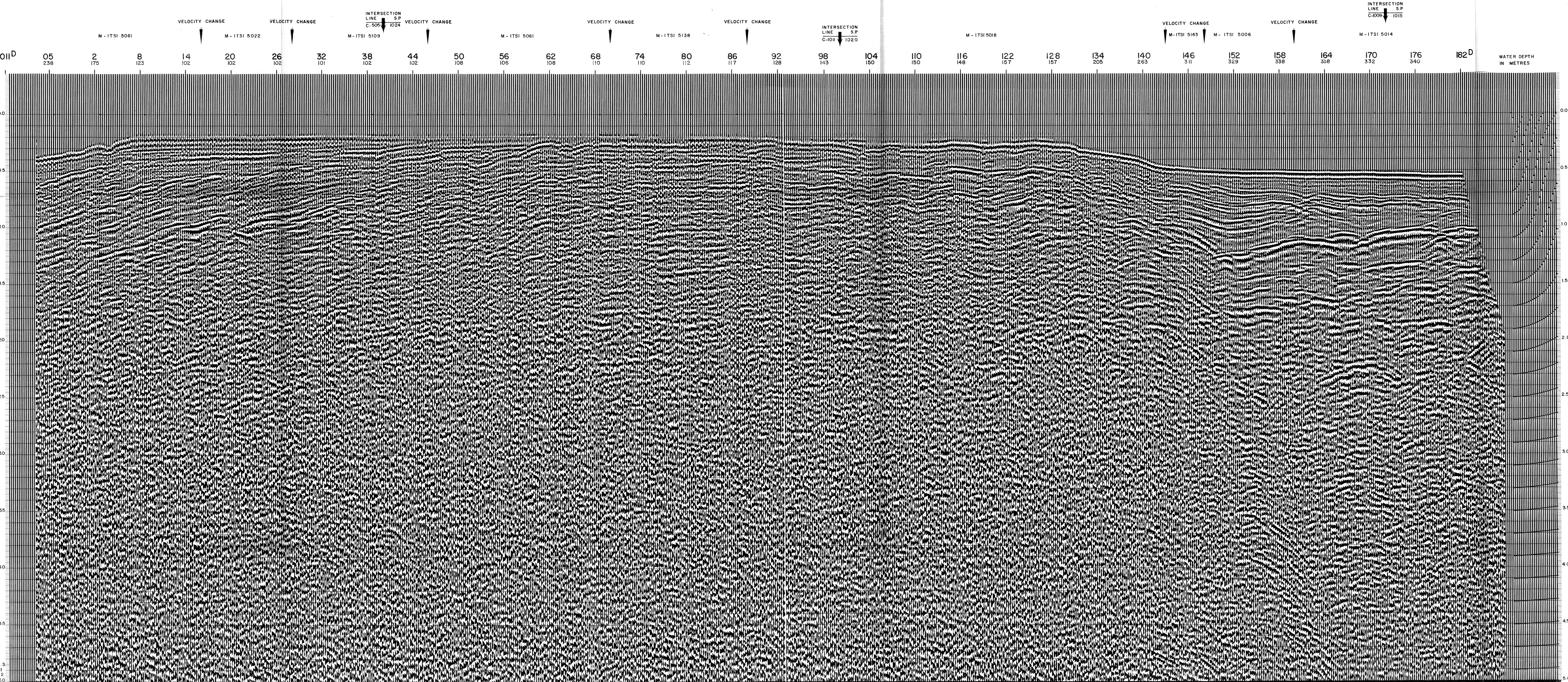
<b>AGIP</b>		AREA: PANTELLERIA	PROSPECT: ZONE "C"	<b>WESTERN GEOPHYSICAL</b> DIVISION OF LITTON INDUSTRIES MILAN DIGITAL CENTER	
<b>RECORDING DATA</b>		<b>PROCESSING INFORMATION</b>		<b>PROCESSING SEQUENCE</b>	
PARTY NO. 62		SAMPLE RATE 2 ms		1) EDIT - (SUM 3 POPS)	
ENERGY SOURCE AQUAPULSE		DECONVOLUTION		2) DECONVOLVED BEFORE STACK	
FILTER 10-80 HZ		TIME VARIANT FILTER		3) NORMAL MOVE OUT	
CABLE 1600 m		L.C. H.C.		4) 1200 % STACK	
GEOPHONES 32 CRYSTAL ELEMENT		DECONVOLVED BEFORE STACK		5) TIME VARIANT FILTER	
TAPERED ARRAY		TIME ZONE Hz dB OCT Hz dB OCT		6) PLAYBACK (UNFILTERED)	
LEAD IN 760'		AUTO CORR. INT. TIME VARIANT		REEL NO. 71804	
AMPLIFIER RECORD BINARY GAIN		MAX APERTURE 0-500 m		DATE OCTOBER 1968	
CHARGE SIZE 4 GUNS POP		TIME ZONE 0-5 Sec			
DATE SHOT JULY 1968		ITERATIONS 2			

LINE: C-1020

S.P. 011<sup>D</sup> to S.P. 182<sup>D</sup>

DATUM PLANE: SEA LEVEL

SOUTHWEST



C.S.  
6011  
6012  
6.0