

AREA: PANTELLERIA

PROSPECT: ZONE "C"

WESTERN  
GEOPHYSICAL  
DIVISION OF LITTON INDUSTRIES  
MILAN DIGITAL CENTER

RECORDING DATA

PARTY NO. 62  
ENERGY SOURCE AQUAPULSE  
FILTER 10-80 HZ  
CABLE 1600 m.  
GEOPHONES 32 CRYSTAL ELEMENT  
TAPERED ARRAY  
LEAD IN 760'  
AMPLIFIER REDCOR BINARY GAIN  
CHARGE SIZE 4 GUNS POP  
DATE SHOT JULY 1968

PROCESSING INFORMATION

SAMPLE RATE 2 ms.

DECONVOLUTION

DECONVOLVED BEFORE STACK

AUTO CORR. INT. \_\_\_\_\_ TIME VARIANT  
MAX. APERTURE 0-500 ms.  
TIME ZONE 0-5 Sec.  
ITERATIONS 2

TIME VARIANT FILTER

TIME ZONE	L.C. Hz	H.C. dB OCT
0.400-0.625	20 - 18	60 - 18
0.625-0.725	15 - 12	50 - 12
0.725-1.700	10 - 12	50 - 12
1.700-2.000	10 - 12	35 - 12
2.000-5.000	5 - 6	30 - 6

PROCESSING SEQUENCE

- 1) EDIT - (SUM 3 POPS)
- 2) DECONVOLVED BEFORE STACK
- 3) NORMAL MOVE OUT
- 4) 1200 % STACK
- 5) TIME VARIANT FILTER
- 6) PLAYBACK (UNFILTERED)

REEL NO. 71439  
DATE OCTOBER 1968

LINE: C-1018

S.P. 103 to S.P. 205

DATUM PLANE: SEA LEVEL

NORTHEAST

INTERSECTION  
LINE S.P.  
C-1011 880

VELOCITY CHANGE

VELOCITY CHANGE

VELOCITY CHANGE

VELOCITY CHANGE

VELOCITY CHANGE

VELOCITY CHANGE

VELOCITY CHANGE

VELOCITY CHANGE

M-ITSI 5006

M-ITSI 5009

M-ITSI 5014

M-ITSI 5021

M-ITSI 5186

M-ITSI 5185

M-ITSI 5006

M-ITSI 5139

M-ITSI 5143

M-ITSI 5139

WATER DEPTH 103  
IN METRES 369

109  
379

115  
384

121  
391

127  
395

133  
382

139  
366

145  
351

151  
344

157  
340

163  
340

169  
344

175  
340

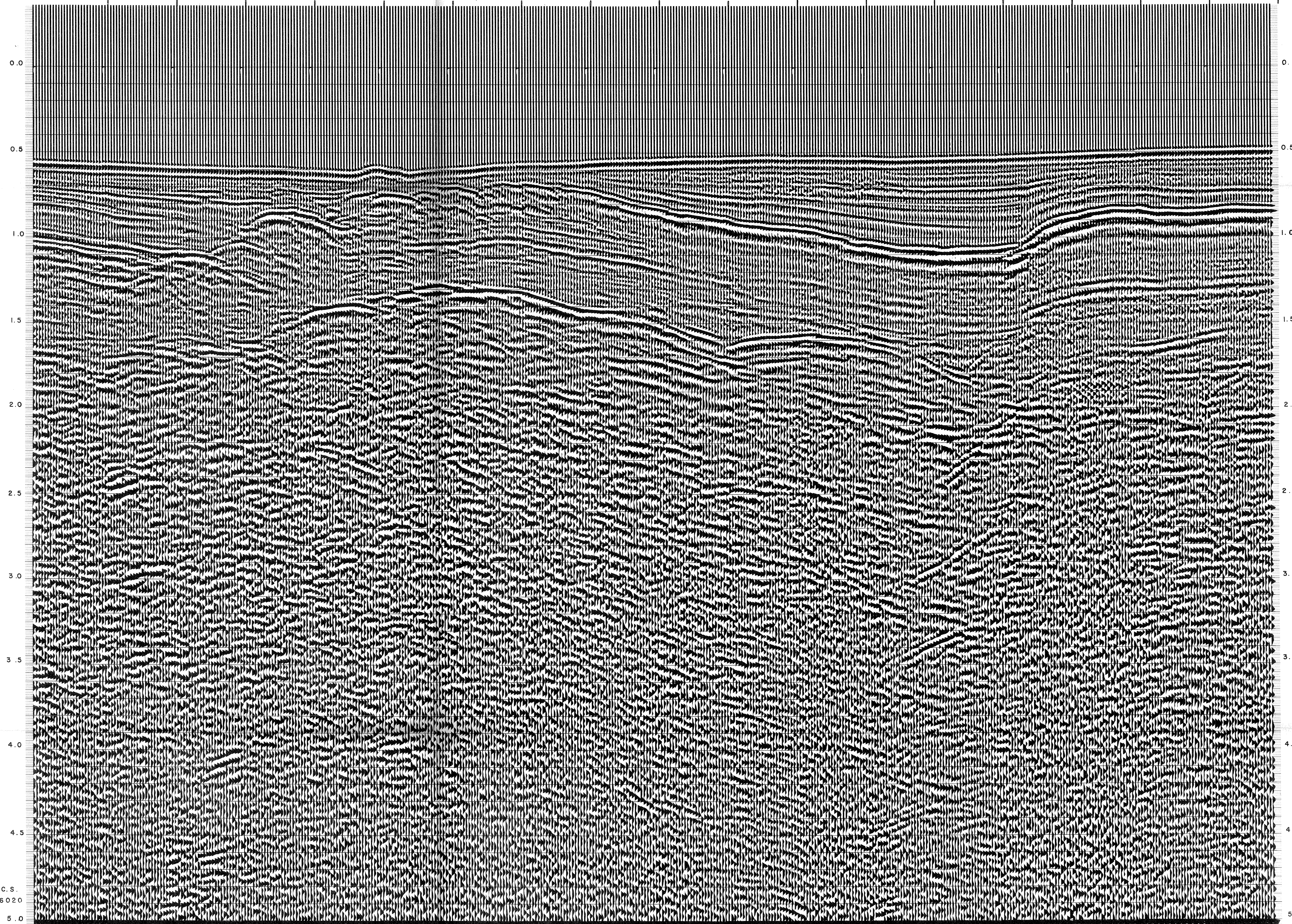
181  
336

187  
336

193  
325

199  
322

205  
318



C.S.  
6020  
5.0