

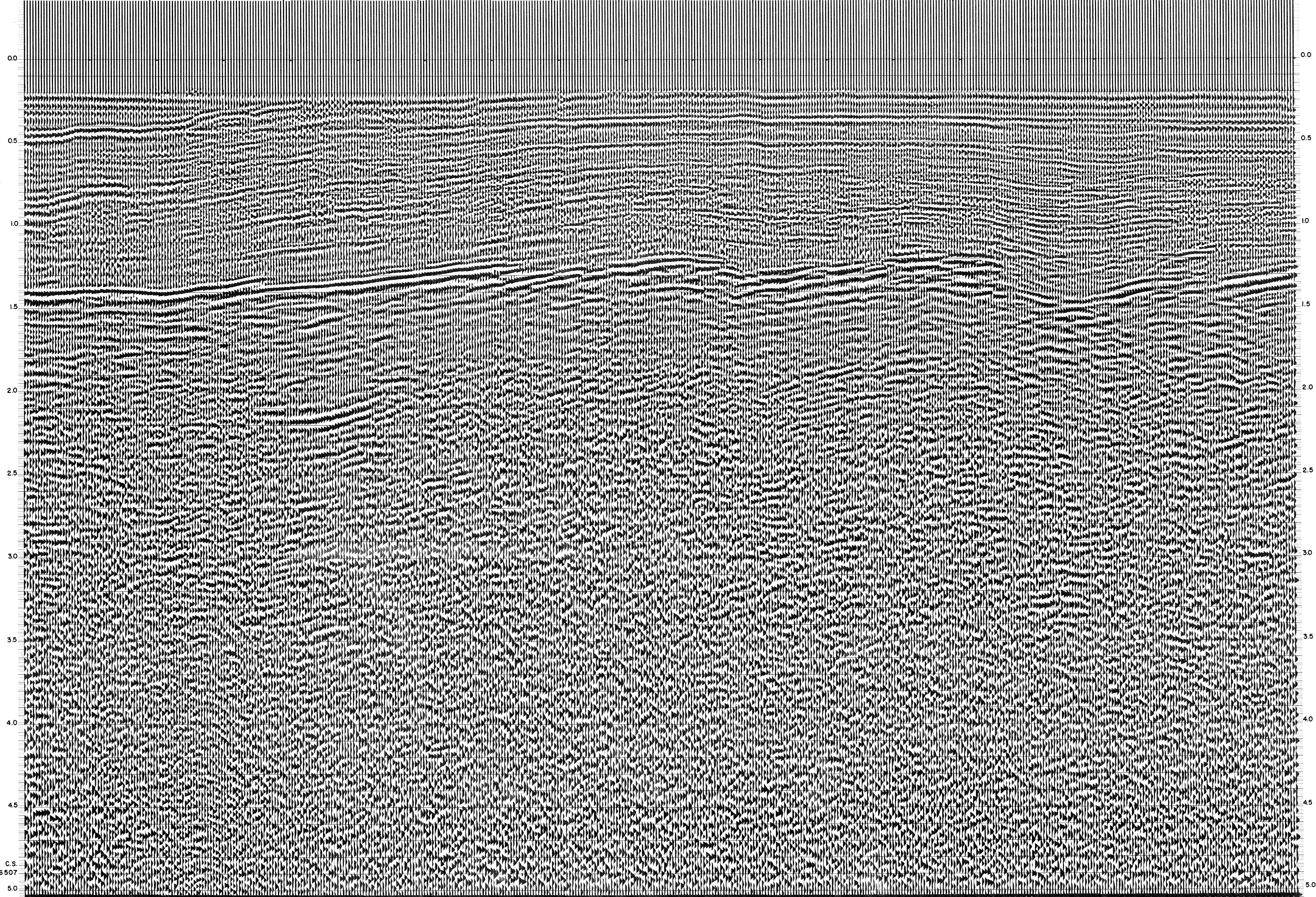
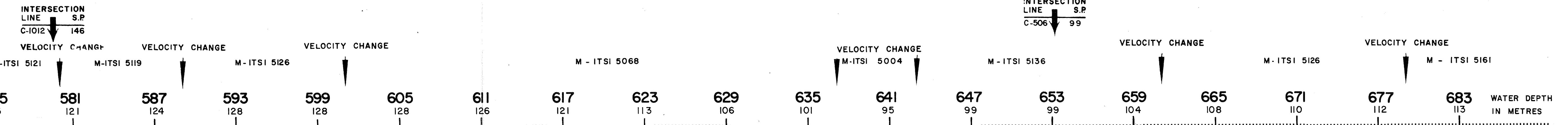
THE AQUAPULSE SYSTEM

AGIP AREA: PANTELLERIA PROSPECT: ZONE "C" WESTERN GEOPHYSICAL DIVISION OF LITTON INDUSTRIES MILAN DIGITAL CENTER	RECORDING DATA PARTY NO. 62 ENERGY SOURCE AQUAPULSE FILTER 10-80 HZ CABLE 1600 m. GEOPHONES 32 CRYSTAL ELEMENT TAPERED ARRAY LEAD IN 760'		PROCESSING INFORMATION SAMPLE RATE 2 ms. DECONVOLUTION DECONVOLVED BEFORE STACK AUTO CORR. INT. TIME VARIANT MAX. APERTURE 0-500 ms. TIME ZONE 0-5 Sec. ITERATIONS 2		PROCESSING SEQUENCE 1) EDIT - (SUM 3 POPS) 2) DECONVOLVED BEFORE STACK 3) NORMAL MOVE OUT 4) 1200 % STACK 5) TIME VARIANT FILTER 6) PLAYBACK (UNFILTERED)
	TIME VARIANT FILTER L.C. H.C. TIME ZONE Hz dB OCT Hz dB OCT 0.100 - 0.350 20 18 50 18 0.350 - 1.000 15 12 55 12 1.000 - 1.800 10 12 50 12 1.800 - 2.200 10 12 35 12 2.200 - 5.000 5 6 30 12		REEL NO. 70 890 DATE NOVEMBER 1968		

LINE: C-1015

S.P. 575 to S.P. 683

DATUM PLANE: SEA LEVEL



C.S. 6507
50