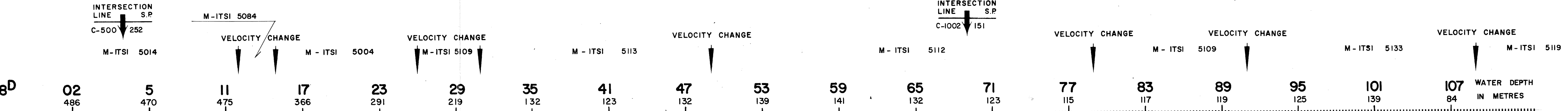


THE AQUAPULSE SYSTEM

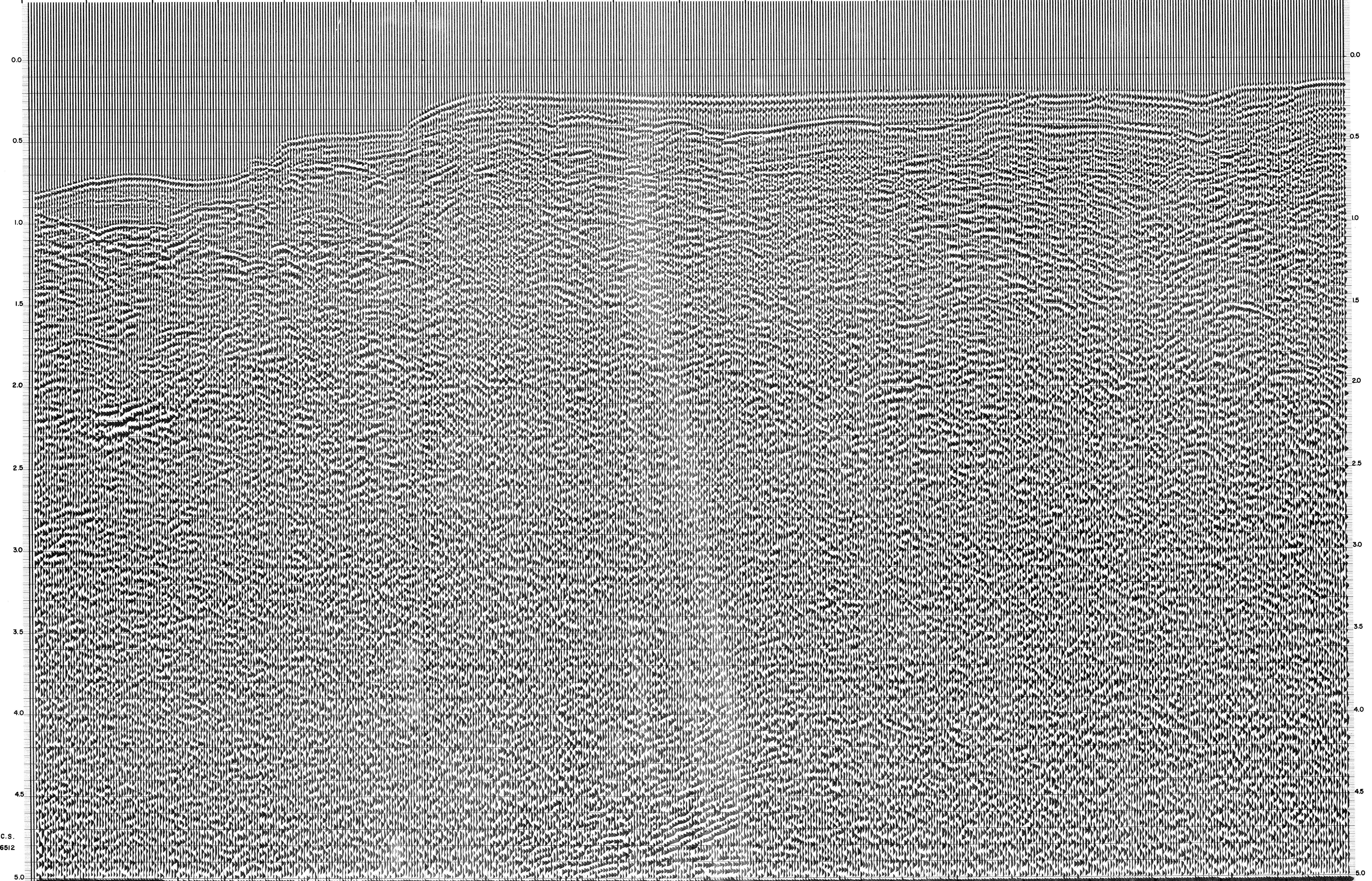
LINE: C-1015

S.P. 08^D to S.P. 107

DATUM PLANE: SEA LEVEL



AGIP AREA: PANTELLERIA PROSPECT: ZONE "C"		WESTERN GEOPHYSICAL DIVISION OF LITTON INDUSTRIES MILAN DIGITAL CENTER	
RECORDING DATA PARTY NO. 62 ENERGY SOURCE AQUAPULSE FILTER 10-80 HZ CABLE 1600 m. GEOPHONES 32 CRYSTAL ELEMENT TAPERED ARRAY LEAD IN 760'		PROCESSING INFORMATION SAMPLE RATE 2 ms.	
DECONVOLUTION DECONVOLVED BEFORE STACK AUTO CORR. INT. TIME VARIANT MAX. APERTURE 0-500 m. TIME ZONE 0-5 Sec. ITERATIONS 2		TIME VARIANT FILTER L.C. H.C. TIME ZONE Hz dB OCT Hz dB OCT 0.100 - 0.350 20 18 60 18 0.350 - 1.600 15 12 55 12 1.600 - 2.200 10 12 50 12 2.200 - 2.600 10 12 35 12 2.600 - 5.000 5 6 30 12	
AMPLIFIER REDCOR BINARY GAIN CHARGE SIZE 4 GUNS POP DATE SHOT JULY 1968		PROCESSING SEQUENCE 1) EDIT - (SUM 3 POPS) 2) DECONVOLVED BEFORE STACK 3) NORMAL MOVE OUT 4) 1200 % STACK 5) TIME VARIANT FILTER 6) PLAYBACK (UNFILTERED)	
		REEL NO. 73425-71344 DATE NOVEMBER 1968	



C.S. 6512