

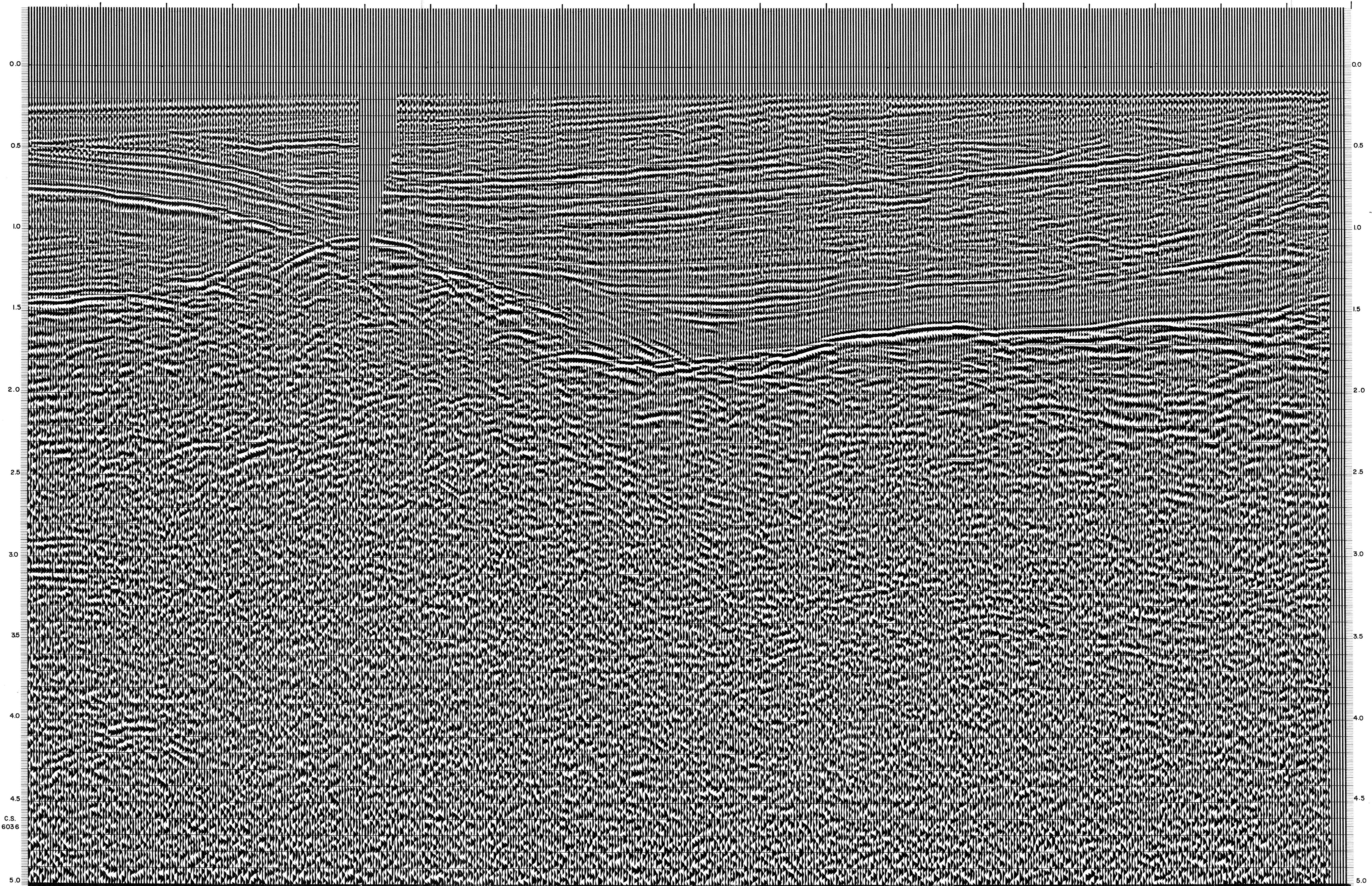
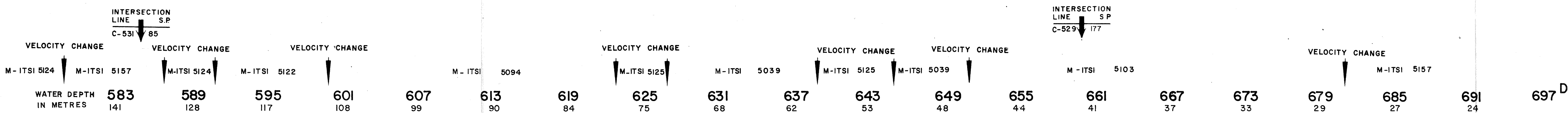
<b>AGIP</b> AREA: PANTELLERIA PROSPECT: ZONE "C"		<b>WESTERN</b> GEOPHYSICAL DIVISION OF LITTON INDUSTRIES MILAN DIGITAL CENTER	
<b>RECORDING DATA</b> PARTY NO. 62 ENERGY SOURCE AQUAPULSE FILTER 10-80 HZ CABLE 1600 m. GEOPHONES 32 CRYSTAL ELEMENT TAPERED ARRAY LEAD IN 780'		<b>PROCESSING INFORMATION</b> SAMPLE RATE 2 ms.	
<b>DECONVOLUTION</b> DECONVOLVED BEFORE STACK AUTO CORR. INT. TIME VARIANT MAX. APERTURE 500 m. TIME ZONE 0-5 Sec. ITERATIONS 2		<b>TIME VARIANT FILTER</b> L.C. H.C. TIME ZONE Hz dB OCT Hz dB OCT 0.00-0.25 20 18 60 18 0.25-0.725 15 12 50 12 0.725-1.600 10 12 50 12 1.600-1.800 10 12 3.5 12 1.800-5000 5 6 30 6	
AMPLIFIER REDCOR BINARY GAIN CHARGE SIZE 4 GUNS POP DATE SHOT JULY 1968		<b>PROCESSING SEQUENCE</b> 1) EDIT - (SUM 3 POPS) 2) DECONVOLVED BEFORE STACK 3) NORMAL MOVE OUT 4) 1200 % STACK 5) TIME VARIANT FILTER 6) PLAYBACK (UNFILTERED)	
		REEL NO. 74157 DATE OCTOBER 1968	

LINE: C-1014

S.P. 583 to S.P. 697<sup>D</sup>

NORTHEAST

DATUM PLANE: SEA LEVEL



C.S. 6036