

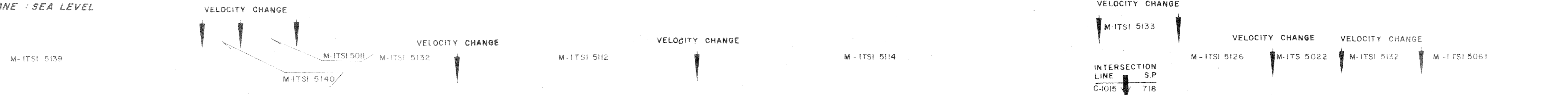
<b>ACIP</b>		AREA : PANTELLERIA	PROSPECT : ZONE "C"	<b>WESTERN GEOPHYSICAL</b> <small>DIVISION OF LITTON INDUSTRIES</small> MILAN DIGITAL CENTER
<b>RECORDING DATA</b> PARTY NO. 62 ENERGY SOURCE AQUAPULSE FILTER 10-80 HZ CABLE 1600 m GEOPHONES 32 CRYSTAL ELEMENT TAPERED ARRAY LEAD IN 780'		<b>PROCESSING INFORMATION</b> SAMPLE RATE 2 ms		<b>PROCESSING SEQUENCE</b> 1) EDIT - (SUM 3 POPS) 2) DECONVOLVED BEFORE STACK 3) NORMAL MOVE OUT 4) 1200 % STACK 5) TIME VARIANT FILTER 6) PLAYBACK (UNFILTERED)
<b>DECONVOLUTION</b> DECONVOLVED BEFORE STACK AUTO CORR. INT. _____ MAX. APERTURE 0-500 m. TIME ZONE 0-5 Sec. ITERATIONS 2		<b>TIME VARIANT FILTER</b> L.C. H.C. TIME ZONE Hz dB OCT Hz dB OCT 0.100 -0.525 20 18 50 18 0.525 -0.725 15 12 50 12 0.725 -1.000 10 12 50 12 1.000 -1.800 5 12 35 12 1.800 -5.000 5 0 30 6		
AMPLIFIER REDCOR BINARY GAIN _____ CHARGE SIZE 4 GUNS POP DATE SHOT JULY 1968		REEL NO. 74 146 DATE OCTOBER 1968		

LINE: C-1014

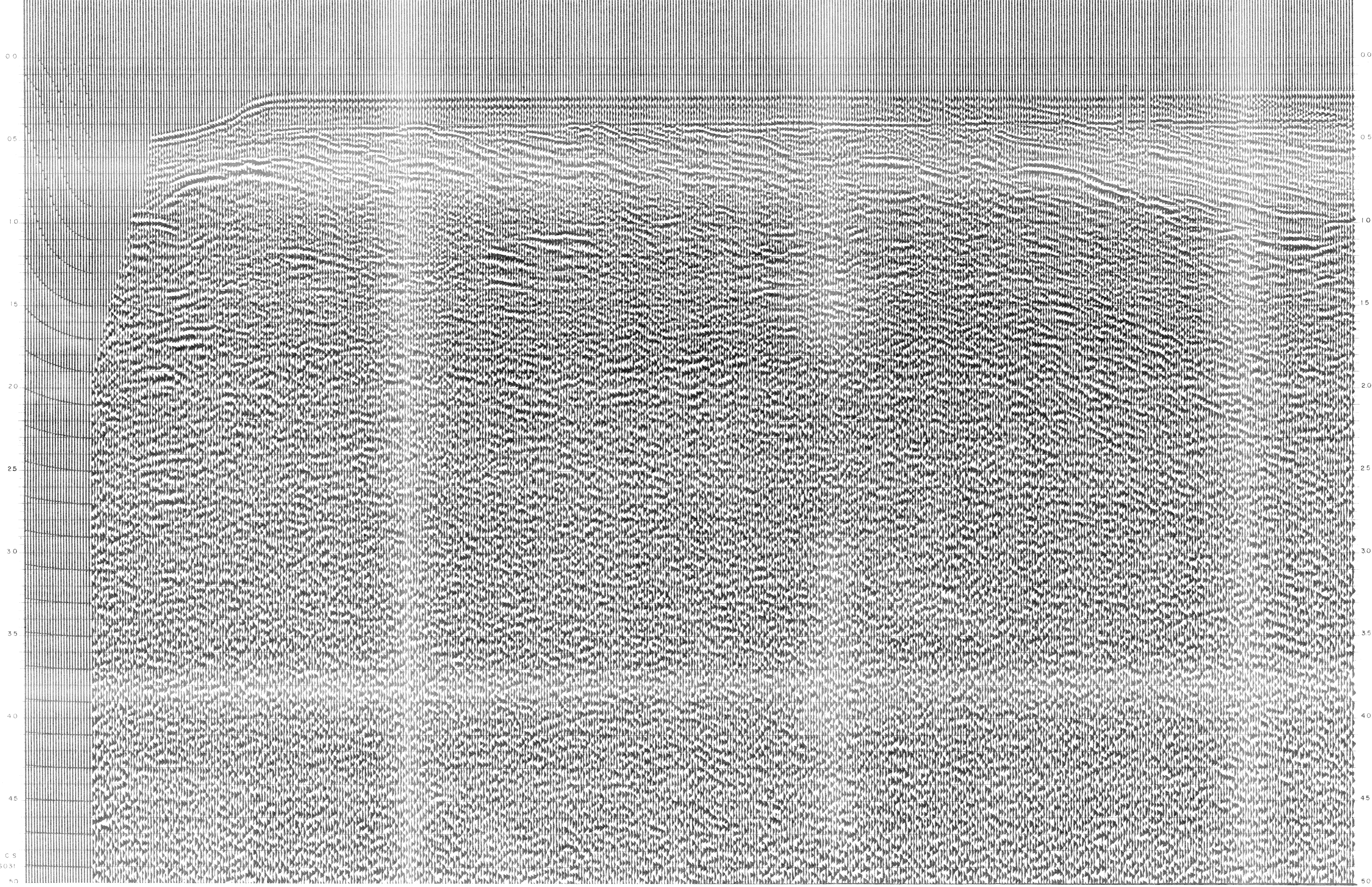
S.P. 1 to S.P. 109

DATUM PLANE : SEA LEVEL

NORTHEAST



WATER DEPTH IN METRES	1	7	13	19	25	31	37	43	49	55	61	67	73	79	85	91	97	103	109
	318	208	139	132	128	124	123	121	119	121	121	124	121	119	121	121	119	117	116



C.S.  
6031