

THE AQUAPULSE SYSTEM

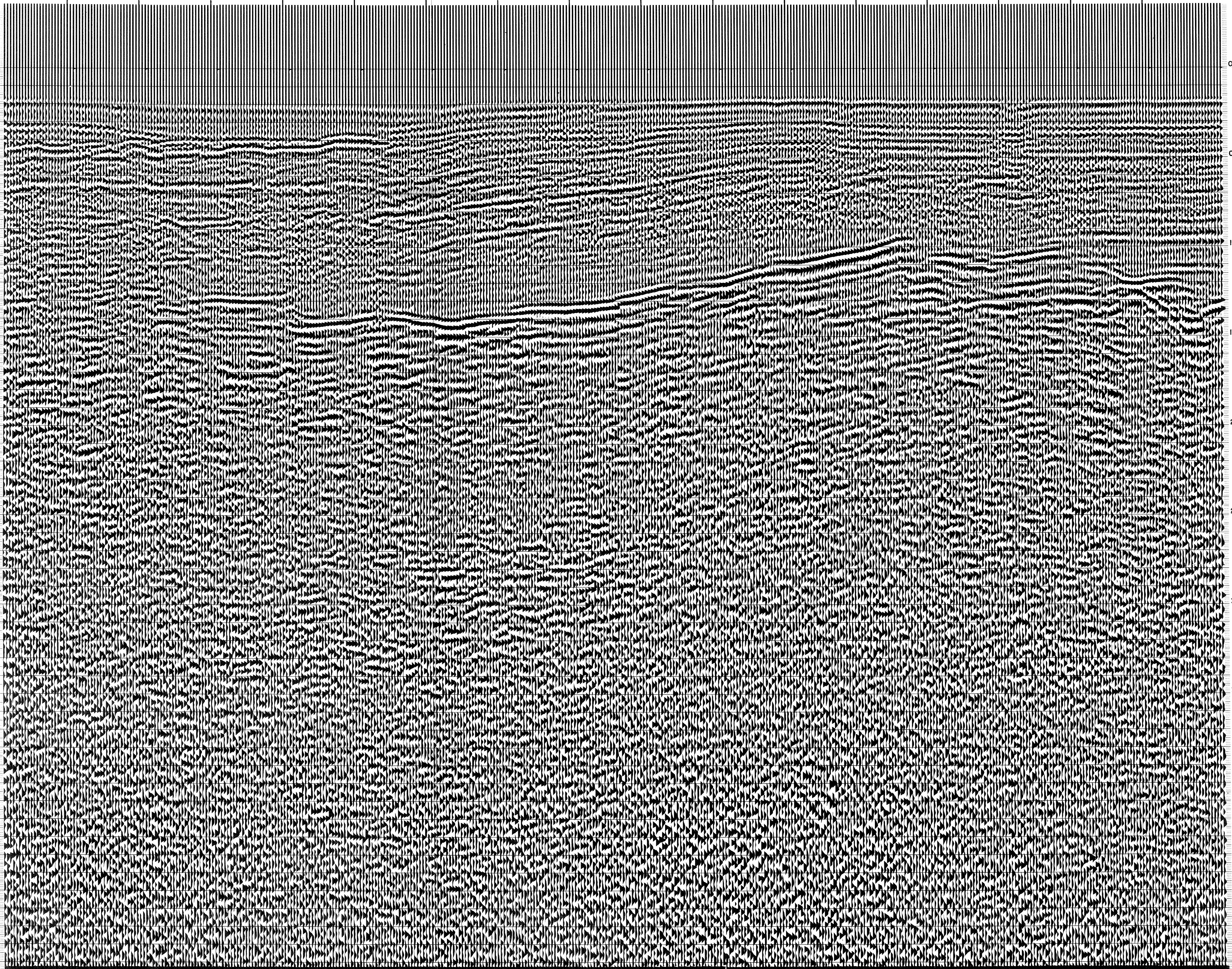
LINE: C-1013

S.P. 573 to S.P. 669

DATUM PLANE : SEA LEVEL
 INTERSECTION LINE S.P. C-1012 218

VELOCITY CHANGE M-ITSI 5161 M-ITSI 5199 VELOCITY CHANGE M-ITSI 5119 VELOCITY CHANGE M-ITSI 5126 VELOCITY CHANGE M-ITSI 5133 VELOCITY CHANGE M-ITSI 5119

573 579 585 591 597 603 609 615 621 627 633 639 645 651 657 663 669 WATER DEPTH IN METRES



AGIP AREA : PANTELLERIA PROSPECT : ZONE "C"	WESTERN GEOPHYSICAL <small>DIVISION OF LITTON INDUSTRIES</small> MILAN DIGITAL CENTER	
	RECORDING DATA PARTY NO. 62 ENERGY SOURCE AQUAPULSE FILTER 10-80 HZ CABLE 1600 m. GEOPHONES 32 CRYSTAL ELEMENT TAPERED ARRAY LEAD IN 760'	PROCESSING INFORMATION SAMPLE RATE 2 ms. DECONVOLUTION DECONVOLVED BEFORE STACK AUTO CORR. INT. TIME VARIANT MAX. APERTURE 0-500 ms. TIME ZONE 0-5 Sec. ITERATIONS 2
AMPLIFIER REDCOR BINARY GAIN CHARGE SIZE 4 GUNS POP DATE SHOT JULY 1968	TIME VARIANT FILTER L.C. H.C. TIME ZONE Hz dB OCT Hz dB OCT 0.150-0.450 20 18 60 18 0.450-0.600 15 12 50 12 0.600-0.900 10 12 50 12 0.900-1.300 10 12 35 12 1.300-5.000 5 6 30 6	
	PROCESSING SEQUENCE 1) EDIT - (SUM 3 POPS) 2) DECONVOLVED BEFORE STACK 3) NORMAL MOVE OUT 4) 1200 % STACK 5) TV FILTER 6) PLAYBACK (UNFILTERED) REEL NO. 74601 DATE OCTOBER 1968	



INTERSECTION LINE S.P. C-506 171

C.S. 6229