

THE AQUAPULSE SYSTEM

LINE: C-1011

S.P. 729 to S.P. 849

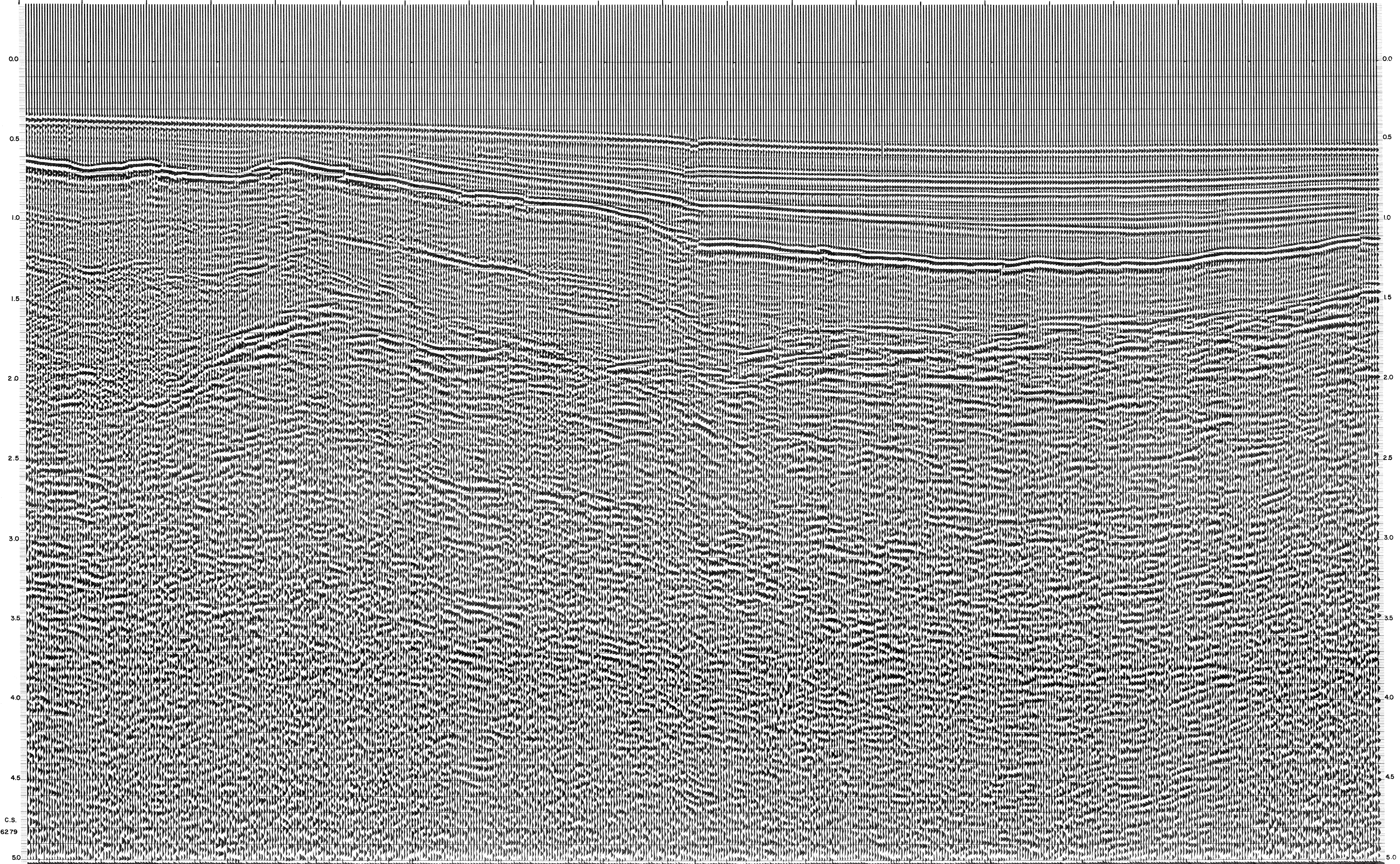
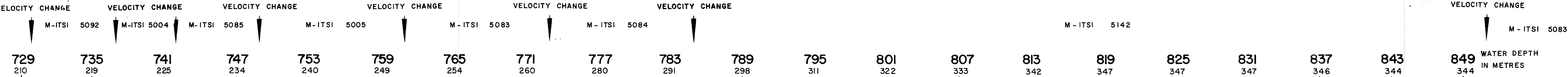
DATUM PLANE : SEA LEVEL
 INTERSECTION LINE S.P.
 C-1014 291

AGIP AREA : PANTELLERIA PROSPECT : ZONE "C" WESTERN GEOPHYSICAL DIVISION OF LITTON INDUSTRIES MILAN DIGITAL CENTER	RECORDING DATA PARTY NO. 62 ENERGY SOURCE AQUAPULSE FILTER 10-80 HZ CABLE 1600 m. GEOPHONES 32 CRYSTAL ELEMENT TAPERED ARRAY LEAD IN 760'		PROCESSING INFORMATION SAMPLE RATE 2 ms. DECONVOLUTION DECONVOLVED BEFORE STACK AUTO CORR. INT. TIME VARIANT MAX. APERTURE 0-500 ms. TIME ZONE 0-5 Sec. ITERATIONS 2		PROCESSING SEQUENCE 1) EDIT - (SUM 3 POPS) 2) DECONVOLVED BEFORE STACK 3) NORMAL MOVE OUT 4) 1200 % STACK 5) TIME VARIANT FILTER 6) PLAYBACK (UNFILTERED)
	TIME VARIANT FILTER L.C. H.C. TIME ZONE Hz dB OCT Hz dB OCT 0.100-0.600 20 18 60 18 0.600-0.700 15 12 50 12 0.700-1.000 10 12 50 12 1.000-1.200 10 12 35 12 1.200-5.000 5 6 30 12		REEL NO. 73399 DATE NOVEMBER 1968		

INTERSECTION LINE S.P.
 C-1016 225



VELOCITY CHANGE



C.S.
6279