

AGIP AREA: PANTELLERIA PROSPECT: ZONE "C"	WESTERN GEOPHYSICAL DIVISION OF LITTON INDUSTRIES MILAN DIGITAL CENTER	
	RECORDING DATA PARTY NO. 62 ENERGY SOURCE AQUAPULSE FILTER 10-80 HZ CABLE 1600 m. GEOPHONES 32 CRYSTAL ELEMENT TAPERED ARRAY LEAD IN 780'	PROCESSING INFORMATION SAMPLE RATE 2 ms.
DECONVOLUTION DECONVOLVED BEFORE STACK	TIME VARIANT FILTER L.C. H.C. TIME ZONE Hz dB OCT Hz dB OCT	
AUTO CORR. INT. TIME VARIANT MAX. APERTURE 0-500 ms. TIME ZONE 0-5 Sec. ITERATIONS 2	0.100-0.600 20 18 60 18 0.600-0.700 15 12 50 12 0.700-1.000 10 12 50 12 1.000-1.200 10 12 35 12 1.200-5.000 5 6 30 12	PROCESSING SEQUENCE 1) EDIT - (SUM 3 POPS) 2) DECONVOLVED BEFORE STACK 3) NORMAL MOVE OUT 4) 1200 % STACK 5) TIME VARIANT FILTER 6) PLAYBACK (UNFILTERED)
REEL NO. 73284 DATE NOVEMBER 1968		

LINE: C-1011
 S.P. 010^D to S.P. III
 DATUM PLANE: SEA LEVEL

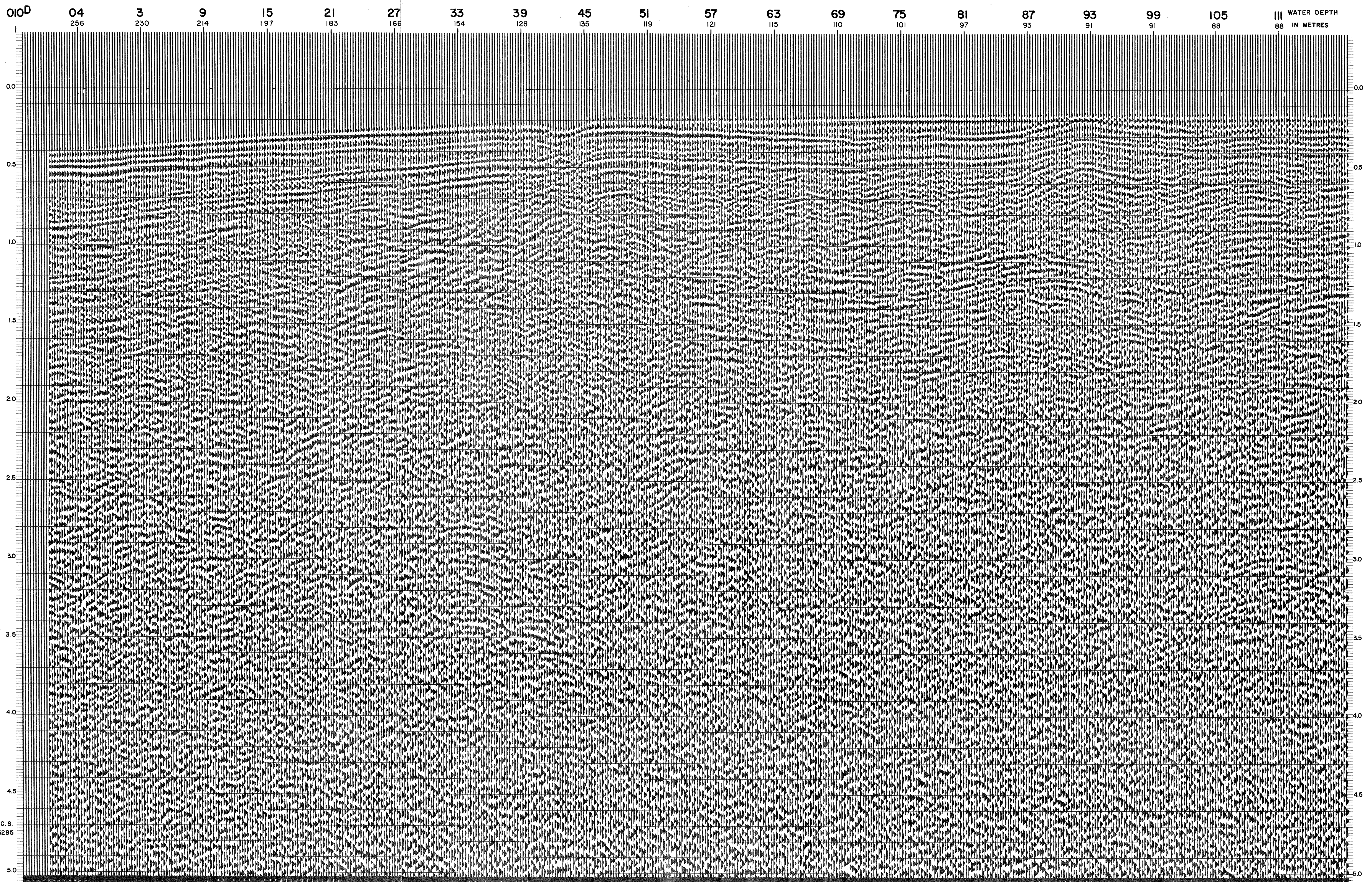


INTERSECTION
 LINE S.P.
 C-500 467

INTERSECTION
 LINE S.P.
 C-1002 367

M-ITSI 5140

M-ITSI 5109



C.S.
6285