

THE AQUAPULSE SYSTEM

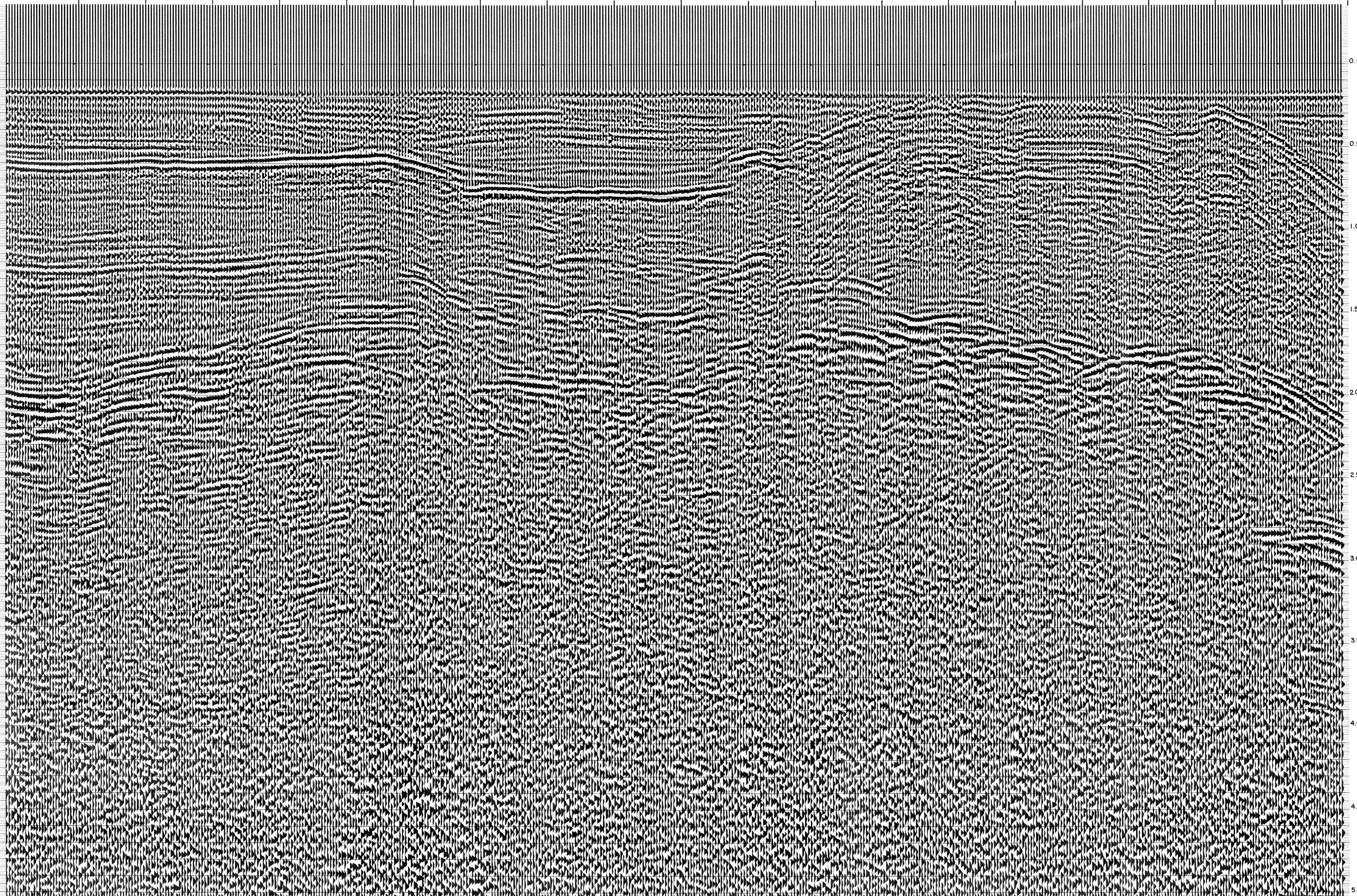
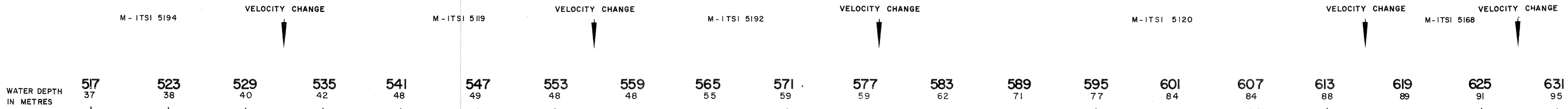
LINE: C-1007

S.P. 517 to S.P. 631

DATUM PLANE: SEA LEVEL

SOUTHEAST

AGIP AREA: PANTELLERIA PROSPECT: ZONE "C"	WESTERN GEOPHYSICAL DIVISION OF LITTON INDUSTRIES MILAN DIGITAL CENTER	
	RECORDING DATA PARTY NO. 62 ENERGY SOURCE AQUAPULSE FILTER 10-80 HZ CABLE 1600 m. GEOPHONES 32 CRYSTAL ELEMENT TAPERED ARRAY LEAD IN 760'	PROCESSING INFORMATION SAMPLE RATE 2 ms.
DECONVOLUTION DECONVOLVED BEFORE STACK AUTO CORR. INT. TIME VARIANT MAX. APERTURE 0-500 ms. TIME ZONE 0-5 Sec. ITERATIONS 2	TIME VARIANT FILTER L.C. H.C. TIME ZONE Hz dB OCT Hz dB OCT 0.100-0.400 20 18 60 18 0.400-0.700 15 12 50 12 0.700-1.300 10 12 50 12 1.300-1.600 10 12 35 12 1.600-5.000 5 6 30 12	
PROCESSING SEQUENCE 1) EDIT - (SUM 3 POPS) 2) DECONVOLVED BEFORE STACK 3) NORMAL MOVE OUT 4) 1200 % STACK 5) TIME VARIANT FILTER 6) PLAYBACK (UNFILTERED)	REEL NO. 74256 - 74328 DATE OCTOBER 1968	



C.S. 6209