

THE AQUAPULSE SYSTEM

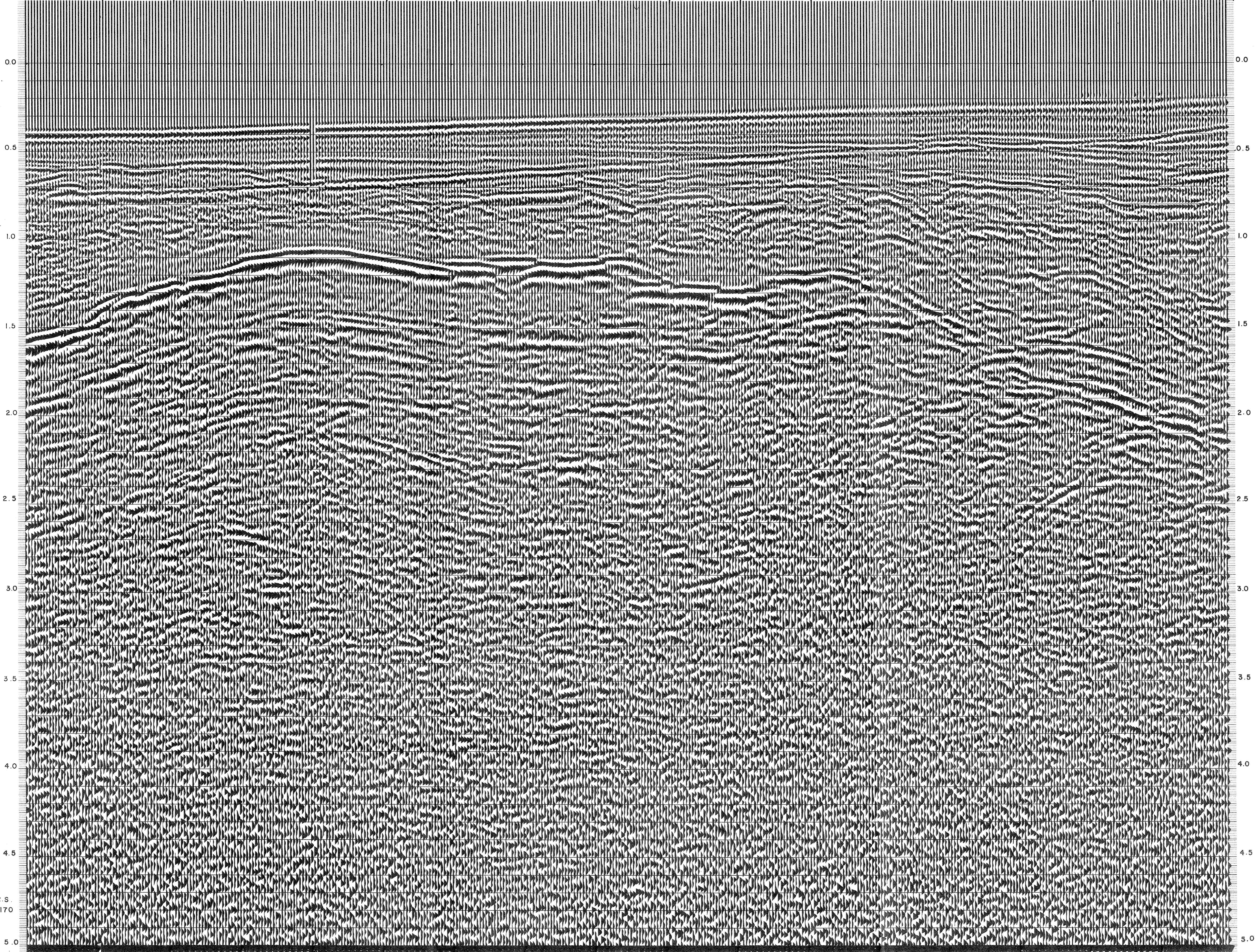
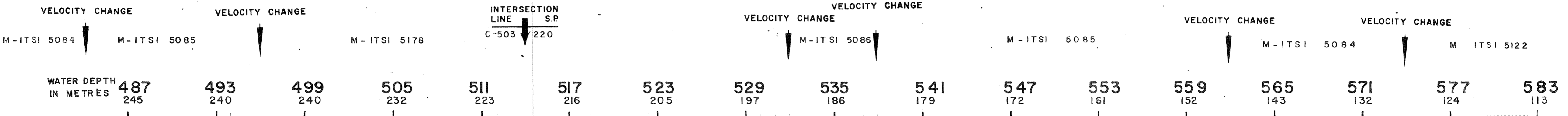
LINE: C-1004

S.P. 487 to S.P. 583

DATUM PLANE : SEA LEVEL

NORTHEAST

<b>AGIP</b>		AREA : PANTELLERIA	PROSPECT : ZONE C	<b>WESTERN</b> GEOPHYSICAL DIVISION OF LITTON INDUSTRIES MILAN DIGITAL CENTER
<b>RECORDING DATA</b> PARTY NO. 62 ENERGY SOURCE AQUAPULSE FILTER 10-80 HZ CABLE 1600 m. GEOPHONES 32 CRYSTAL ELEMENT TAPERED ARRAY LEAD IN 760'		<b>PROCESSING INFORMATION</b> SAMPLE RATE 2 ms.		<b>PROCESSING SEQUENCE</b> 1) EDIT - (SUM 3 POPS) 2) DECONVOLVED BEFORE STACK 3) NORMAL MOVE OUT 4) 1200 % STACK 5) TIME VARIANT FILTER 6) PLAYBACK (UNFILTERED)
<b>DECONVOLUTION</b> DECONVOLVED BEFORE STACK AUTO CORR. INT. _____ TIME VARIANT _____ MAX. APERTURE 500 ms. TIME ZONE 0-5 Sec. ITERATIONS 2		<b>TIME VARIANT FILTER</b> L.C. H.C. TIME ZONE Hz dB OCT Hz dB OCT 0.100-0.500 20 - 18 60 - 18 0.500-0.700 15 - 12 50 - 12 0.700-1.250 10 - 12 50 - 12 1.250-1.400 10 - 12 35 - 12 1.400-5.000 5 - 6 30 - 6		REEL NO. 73145 DATE OCTOBER 1968



C.S. 6170