

AGIP AREA: PANTELLERIA PROSPECT: ZONE "C"	WESTERN GEOPHYSICAL <small>DIVISION OF CITICORP INDUSTRIES</small> MILAN DIGITAL CENTER	
	RECORDING DATA PARTY NO. 82 ENERGY SOURCE AQUAPULSE FILTER 10-80 HZ CABLE 1600 m. GEOPHONES 32 CRYSTAL ELEMENT TAPERED ARRAY LEAD IN 750'	PROCESSING INFORMATION <small>SAMPLE RATE 2 ms.</small> DECONVOLUTION DECONVOLVED BEFORE STACK TIME VARIANT FILTER L.C. H.C. TIME ZONE Hz dB OCT Hz dB OCT AUTO CORR. INT. TIME VARIANT MAX. APERTURE 0.500 ms. TIME ZONE 0-5 Sec. ITERATIONS 2
AMPLIFIER REDCOR BINARY GAIN CHARGE SIZE 4 GUNS POP DATE SHOT JULY 1968	PROCESSING SEQUENCE 1) EDIT - (SUM 3 POPS) 2) DECONVOLVED BEFORE STACK 3) NORMAL MOVE OUT 4) 1200 % STACK 5) TIME VARIANT FILTER 6) PLAYBACK (UNFILTERED) REEL NO. 73384 DATE OCTOBER 1968	

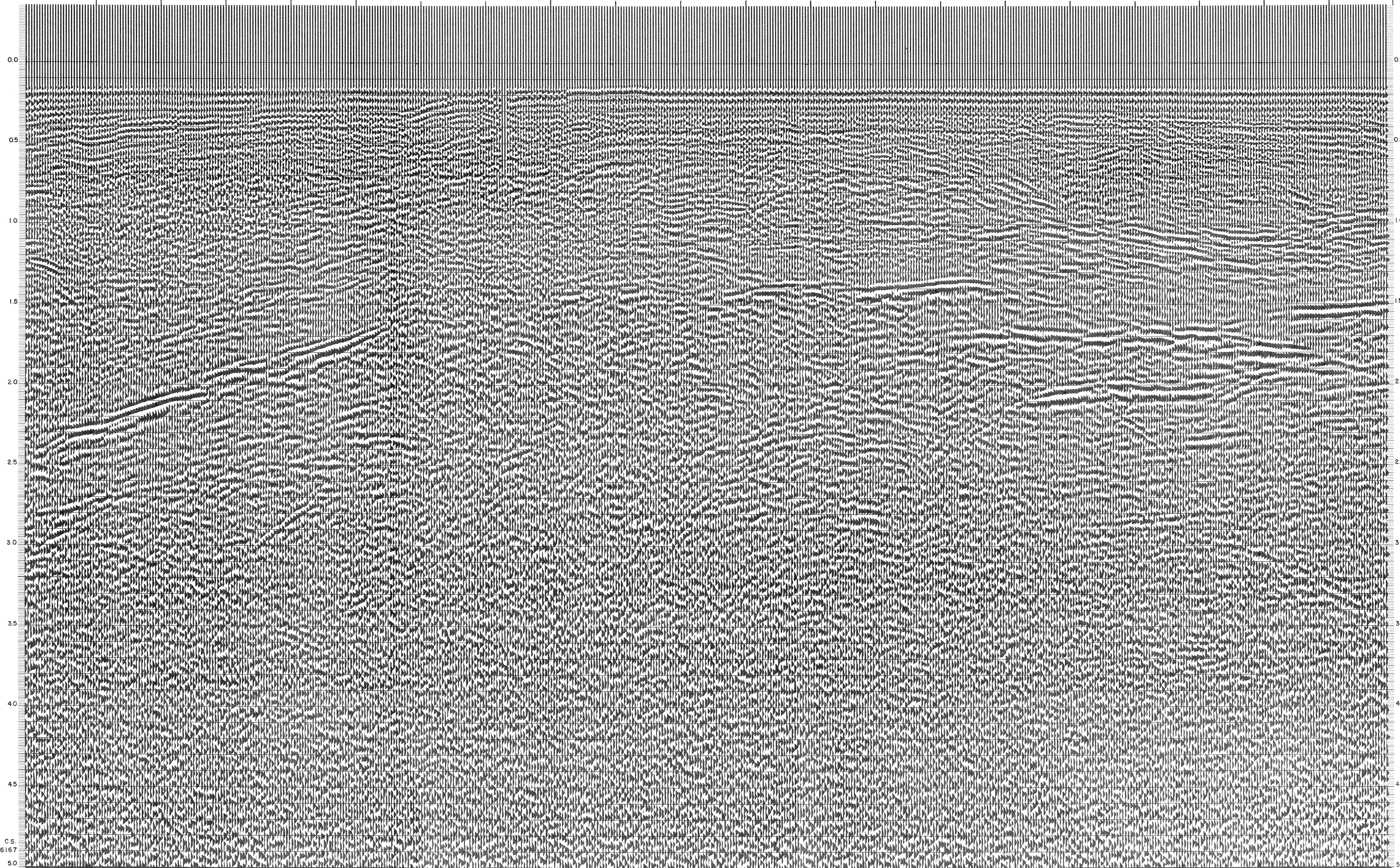
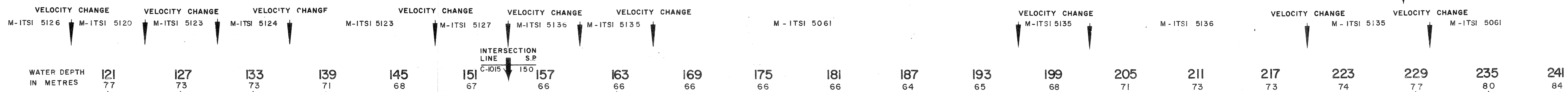
LINE: C-1004

S.P. 121 to S.P. 241

NORTHEAST

DATUM PLANE: SEA LEVEL

INTERSECTION LINE S.P. C-1003 160



C.S. 6167 50