

**AGIP** AREA: PANTELLERIA PROSPECT: ZONE "C" **WESTERN GEOPHYSICAL**  
 DIVISION OF CITICORP INDUSTRIES MILAN DIGITAL CENTER

<b>RECORDING DATA</b>		<b>PROCESSING INFORMATION</b>		<b>PROCESSING SEQUENCE</b>	
PARTY NO. 62		SAMPLE RATE 2 ms.		1) EDIT - (SUM 5 POPS)	
ENERGY SOURCE AQUAPULSE		<b>DECONVOLUTION</b>		2) DECONVOLVED BEFORE STACK	
FILTER 10-80 HZ		<b>TIME VARIANT FILTER</b>		3) NORMAL MOVE OUT	
CABLE 1600 m.		L.C. H.C.		4) 1200 % STACK	
GEOPHONES 32 CRYSTAL ELEMENT		TIME ZONE Hz dB OCT Hz dB OCT		5) TIME VARIANT FILTER	
TAPERED ARRAY		0.200 - 0.850 20 18 50 18		6) PLAYBACK (UNFILTERED)	
LEAD IN 760'		AUTO CORR. INT. TIME VARIANT		REEL NO. 7.4 256	
AMPLIFIER REDCOR BINARY GAIN		0.500 - 0.950 15 12 50 18		DATE OCTOBER 1968	
CHARGE SIZE 4 GUNS POP		MAX. APERTURE 0-5 m.			
DATE SHOT JULY 1968		TIME ZONE 0-5 Sec.			
		ITERATIONS 2			
		1.000 - 1.500 10 12 35 18			
		1.500 - 5.000 5 6 30 6			

LINE: C-1003

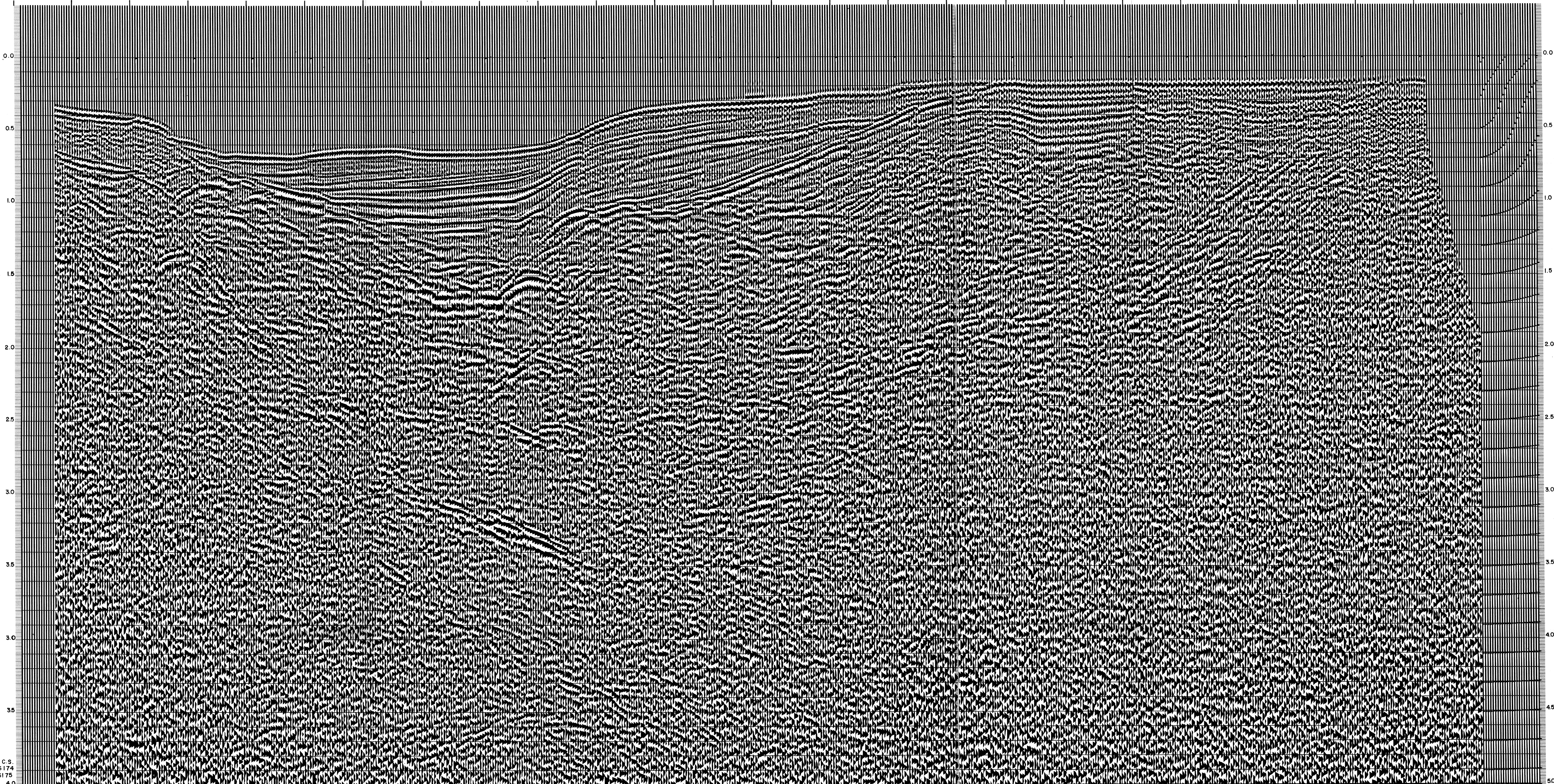
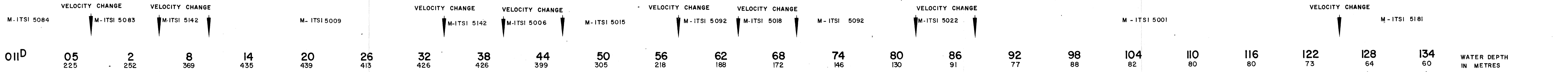
S.P. 011<sup>D</sup> to S.P. 134

DATUM PLANE: SEA LEVEL

INTERSECTION LINE S.P. C-1000 157

INTERSECTION LINE S.P. C-500 756

NORTHWEST



C.S. 6174 6175 4.0