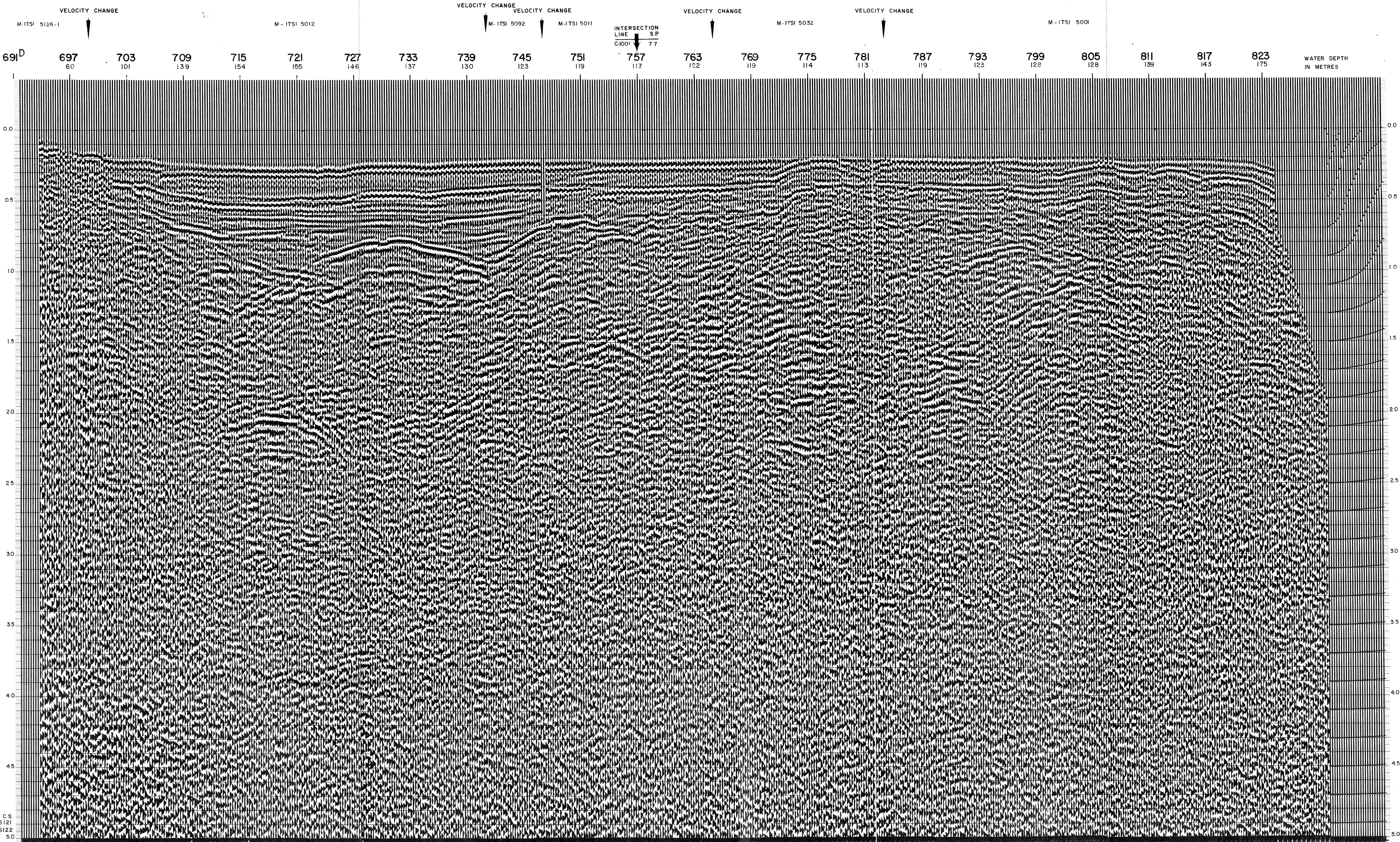


|  |  |   |
|--|--|---|
| <b>AGIP</b><br>AREA : PANTELLERIA<br>PROSPECT : ZONE "C"   | <b>WESTERN GEOPHYSICAL</b><br>DIVISION OF LITTON INDUSTRIES<br>MILAN DIGITAL CENTER  |   |
|  | <b>RECORDING DATA</b><br>PARTY NO. 62<br>ENERGY SOURCE AQUAPULSE<br>FILTER 10-80 HZ<br>CABLE 1600 m.<br>GEOPHONES 32 CRYSTAL ELEMENT<br>TAPERED ARRAY<br>LEAD IN 760'  | <b>PROCESSING INFORMATION</b><br>SAMPLE RATE 2 ms.<br><b>DECONVOLUTION</b><br>DECONVOLVED BEFORE STACK<br>AUTO CORR. INT. TIME VARIANT<br>MAX. APERTURE 0-500 ms.<br>TIME ZONE 0-5 Sec.<br>ITERATIONS 2 |
|  | <b>TIME VARIANT FILTER</b><br>L.C. H.C.<br>TIME ZONE Hz dB OCT Hz dB OCT<br>0.100 -0.375 20 18 6.0 18<br>0.375 -0.600 15 12 5.0 12<br>0.600 -0.800 10 12 5.0 12<br>0.800 -1.000 10 12 3.4 12<br>1.000 -5.000 5 6 3.0 6 | <b>PROCESSING SEQUENCE</b><br>1) EDIT - (SUM 3 POPS)<br>2) DECONVOLVED BEFORE STACK<br>3) NORMAL MOVE OUT<br>4) 1200 % STACK<br>5) TIME VARIANT FILTER<br>6) PLAYBACK (UNFILTERED)                      |
| <b>RECORDING DATA</b><br>AMPLIFIER REDCOR BINARY GAIN<br>CHARGE SIZE 4 GUNS POP<br>DATE SHOT JULY 1968 |  | REEL NO. 74 239<br>DATE OCTOBER 1968  |

LINE: C-1002 D

S.P. 691<sup>D</sup> to S.P. 823

DATUM PLANE : SEA LEVEL



C.S.  
6121  
6122  
50