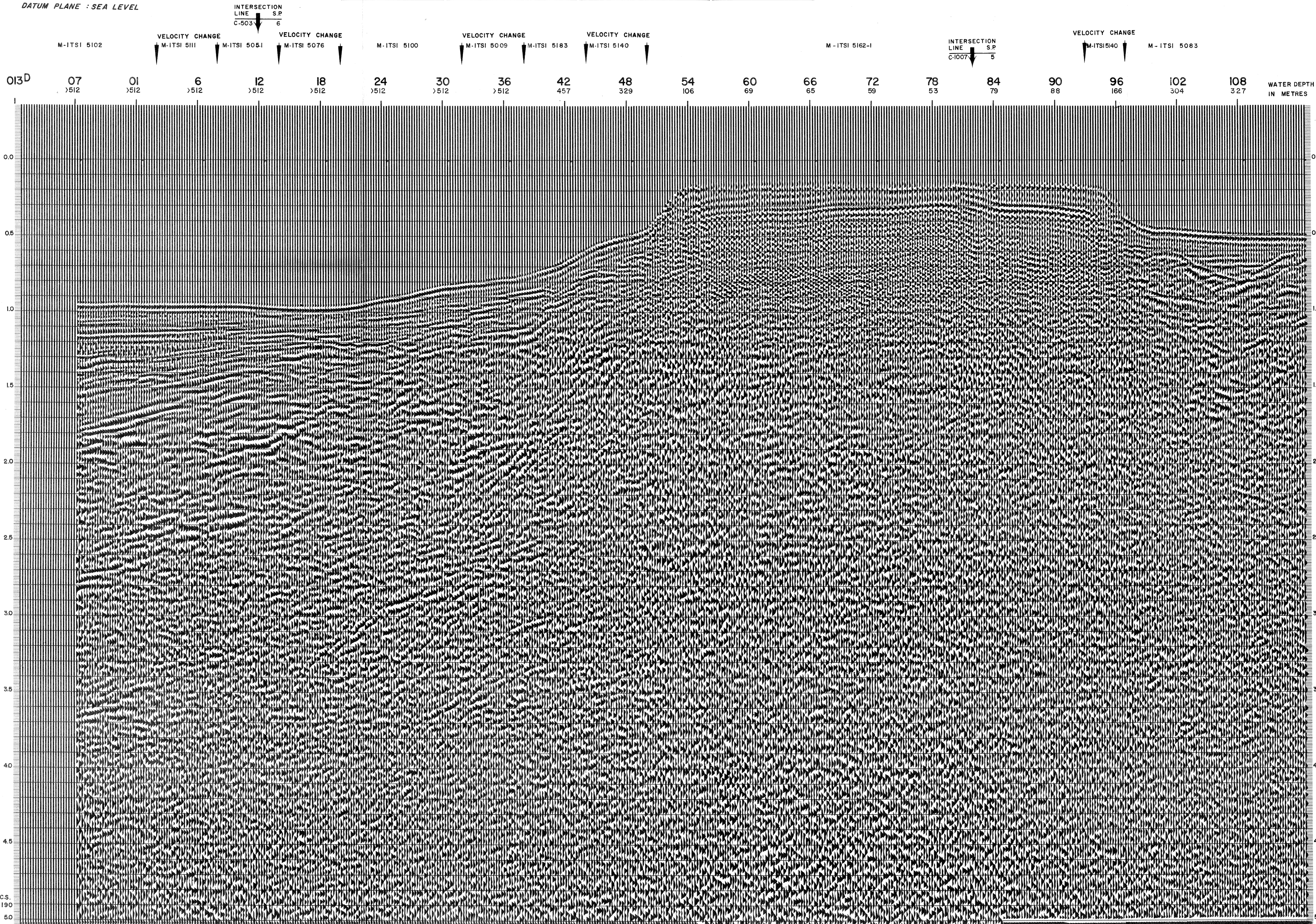


<b>AGIP</b> AREA: PANTELLERIA PROSPECT: ZONE "C"	<b>WESTERN GEOPHYSICAL</b> DIVISION OF LITTON INDUSTRIES MILAN DIGITAL CENTER	
	<b>RECORDING DATA</b> PARTY NO. 62 ENERGY SOURCE AQUAPULSE FILTER 10-80 HZ CABLE 1600 m. GEOPHONES 32 CRYSTAL ELEMENT TAPERED ARRAY LEAD IN 760'	<b>PROCESSING INFORMATION</b> SAMPLE RATE 2 ms.
<b>DECONVOLUTION</b> DECONVOLVED BEFORE STACK AUTO CORR. INT. TIME VARIANT MAX. APERTURE 0-500 ms. TIME ZONE 0-5 Sec. ITERATIONS 2	<b>TIME VARIANT FILTER</b> L.C. H.C. TIME ZONE Hz dB OCT Hz dB OCT 0.100-0.900 20 18 60 18 0.900-1.000 15 12 50 12 1.000-1.100 10 12 50 12 1.100-1.250 10 12 35 12 1.250-5.000 5 6 30 6	
	<b>PROCESSING SEQUENCE</b> 1) EDIT - (SUM 3 POPS) 2) DECONVOLVED BEFORE STACK 3) NORMAL MOVE OUT 4) 1200 % STACK 5) TIME VARIANT FILTER 6) PLAYBACK (UNFILTERED)	
	REEL NO. 74 328 DATE OCTOBER 1968	

LINE: C-1000

S.P. 013<sup>D</sup> to S.P. 108

DATUM PLANE: SEA LEVEL



C.S. 6190