

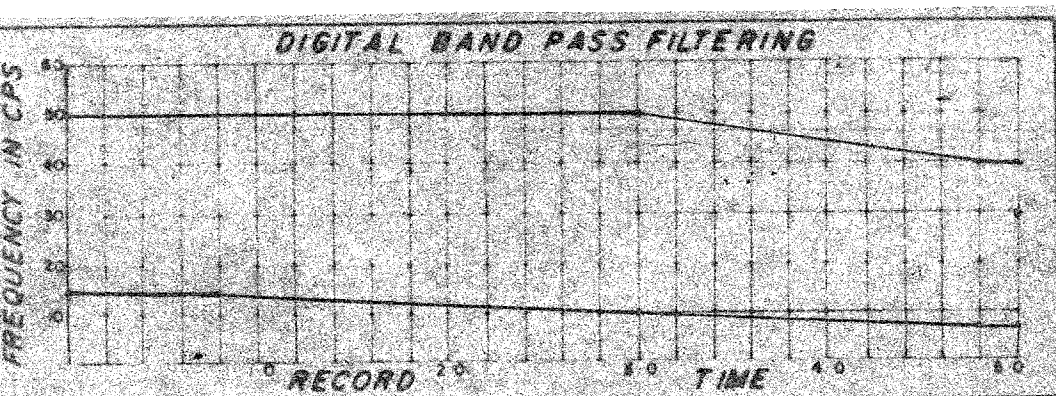
SHOOTING PARAMETERS
 12-Fold Off End
 Shot by GS 1 PTY 906
 Cable Length 2400 m
 Group Interval 100 m
 Shot Point Interval 100 m
 Average Shot Offset 104 m
 Charge Size 50 lb
 Average Sea Depth 13 m

RECORDING PARAMETERS
 System 9000
 Record Length 5.0
 Sample 2 ms
 GAGC Trip 0.78 s Rate 80 db/s
 Init 4.5 db Final 100 db
 Filters Hi 75 cps 24 db/oct
 Lo 8 cps 24 db/oct
 2ms Anti Alias Filtering

SEIS EDIT & NMO
 TAR
 ω 4.0 db/sec
 From 0 sec to 4.0 sec
 Water Velocity 1522 mps
 Replacement Vel 1522 mps

DECONVOLUTION
 Time invariant ARD I
 Filter Length 2.52 msec
 Gate Length 2.6 sec
 NP of Gates/Trace 1
 Initial Times Gate No. 1
 Tr 1.17 sec, Tr 2.40-5.04 sec
 Final Times Gate No. 1
 Tr 1.43 sec, Tr 2.43-10.4 sec

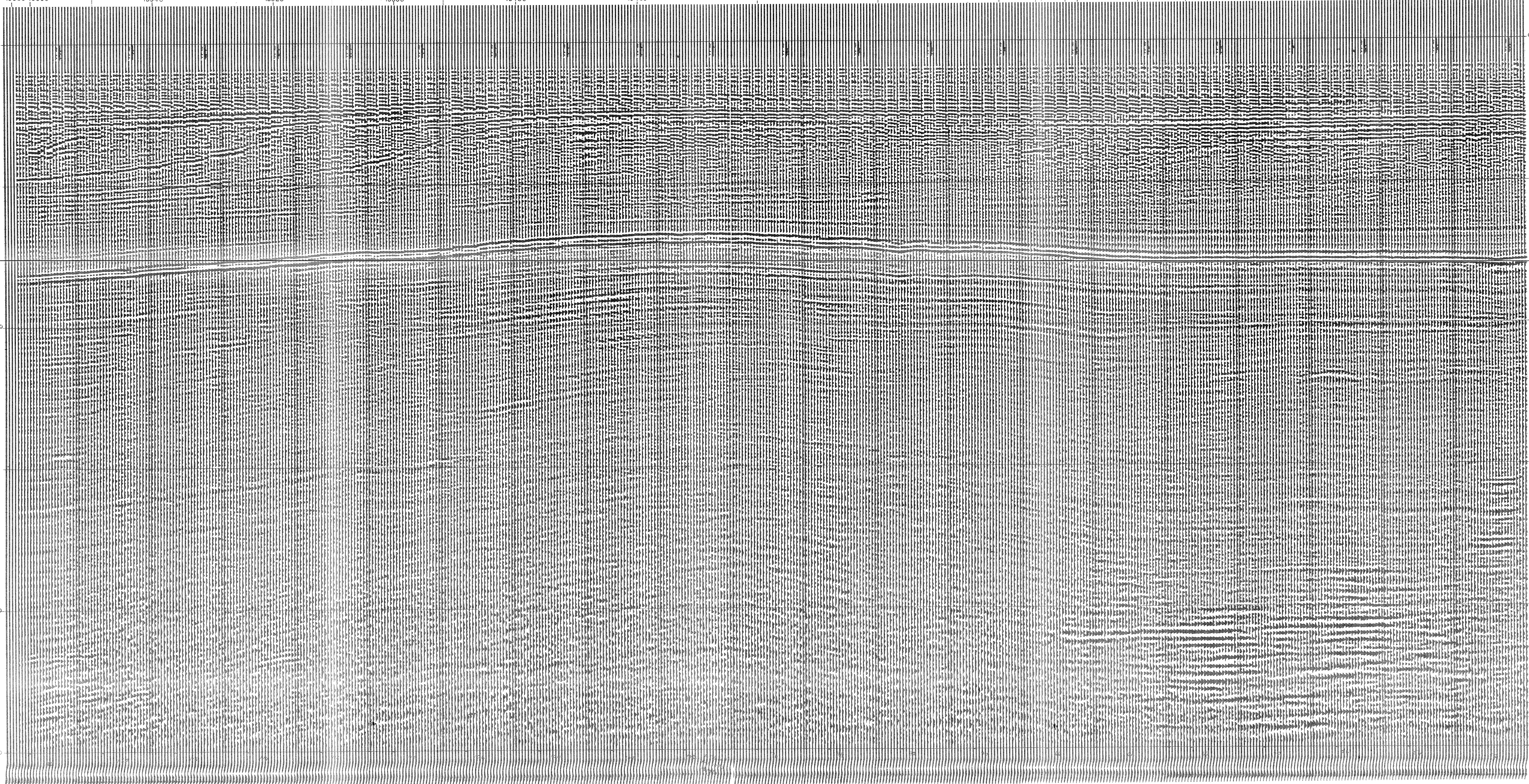
6 FOLD STA. *
 Optimum Wide Band Stack
 RNMO res Oversamp Stack res
 First Break Suppression
 T₁ 0.8 sec T₂ 1.4 sec
 T₃ 0.8 sec T₄ 1.6 sec
 T₅ 1.2 sec T₆ 1.8 sec



DISPLAY
 Analog Filters OUT-OUT
 Straight Gain
 +8 +0 -20 = -2
 Tapes HTL 1154
 HTL

REQ N° L-4347
 Section N° 1073 C
 System Code MST v 2
 Assembled by *[Signature]*
 Checked by *[Signature]*

LINE B 442 S.P. 8235 143 142 Meters 140 136 135 133 132 130 129 128 127 126 126 126 125 123 123
 LINE B 424 S.P. 13135 15563 15560 15540 15520 15500 15480 15460 15440 15420 15400 15389 15340 15330 15322 15294 15280 15260 15250 15242



SE