

AGIP

LINE B 442 (TVF)

November 1984

**SHOOTING PARAMETERS**

6 Field OH End  
 Shot to GS: 01 x 400  
 Cable Length: 1600 m  
 Group Interval: 67 m  
 Shot Point Interval: 134 m  
 Average Shot Offset: 160 m  
 Charge Size: 50 lb  
 Average Seis. Depth: 12 m

**RECORDING PARAMETERS**

System: 9090  
 Record Length: 5.0  
 Sample: 2ms  
 uAGC: Trip 0.78; Rate 80db/s  
 Int: 40 db; Flat: 100db  
 Filters H: 75cps; 24db/oct  
 Lo: 8cps; 24db/oct  
 2ms Ant. Alias Filtering

**PORT B VMT**

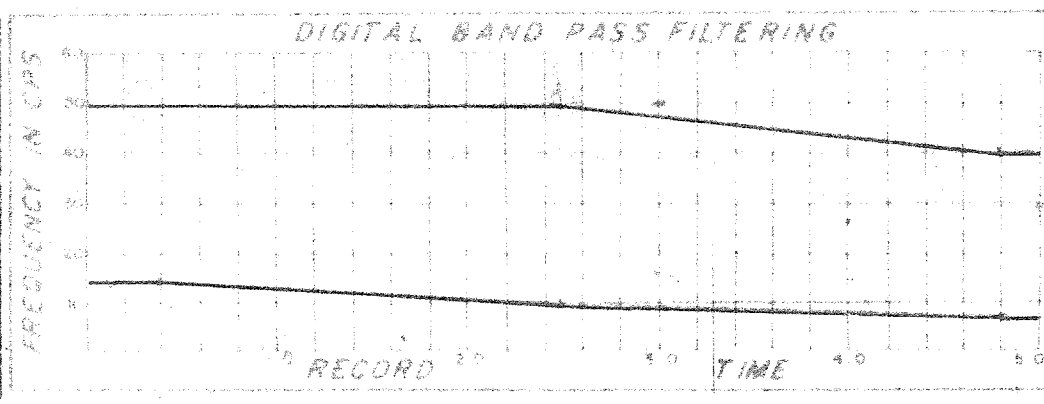
12.5 sec  
 30 sec  
 15.2 sec  
 15.2 sec

**DECONVOLUTION**

Time Variant ARD  
 Filter Length: 0.22 sec  
 Gate Length: 2.2 sec  
 No. of Gates/TTrace: 2  
 Initial Times, Gate No.  
 Tr: 1.5 sec, Tr: 2.4 0.488 sec  
 Final Times, Gate No. 2:  
 Tr: 4.8 sec, Tr: 2.4 3.788 sec

**6 FIELD STACK**

Custom: Wide Band Stack  
 ANMO: Yes Diversity: Stack: Yes  
 First Break Suppression:  
 0 sec Tr: 1.2 sec  
 0.6 sec Tr: 1.4 sec  
 1.0 sec Tr: 1.6 sec

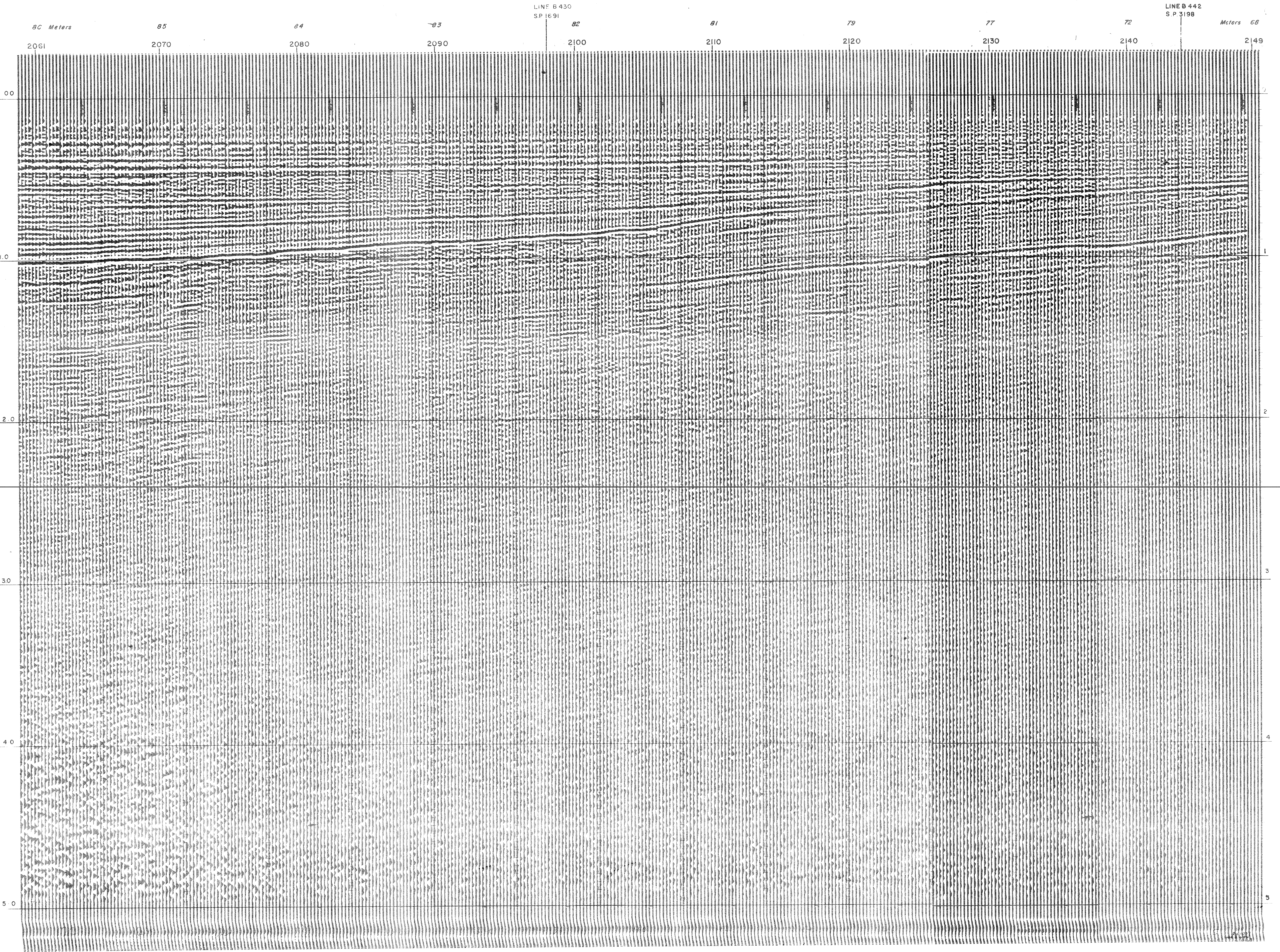


**DISPLAY**

Analog Filters: Out - Out  
 Straight Gain: 12 x 0 - 16 = -4  
 Tapes: HTL II 33  
 MFL

REQ N° L4163  
 Section N° 1057 C  
 System Code: M-STV-2  
 Assembled by: [Signature]  
 Checked by: [Signature]

S.E.



LINE B 430  
S.P. 1691

LINE B 442  
S.P. 3198

Meters 66