

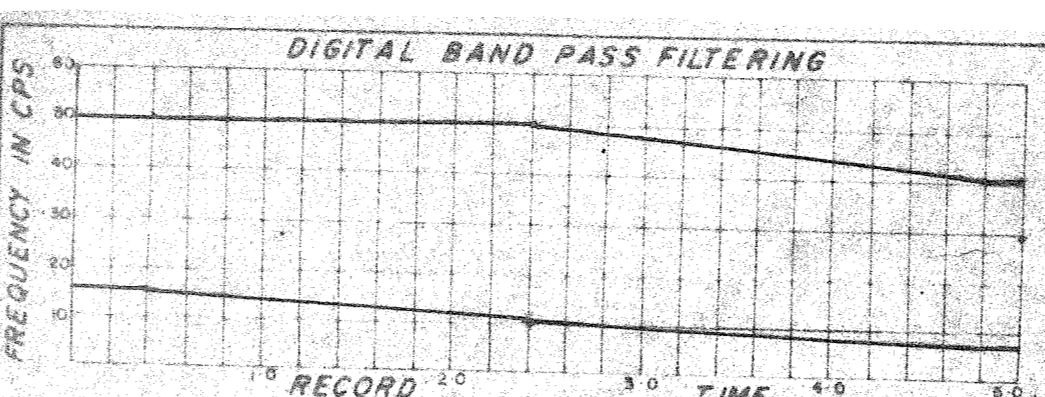
**SHOOTING PARAMETERS**  
 6-Fold Off End  
 Shot by G.S.I. PTY 906  
 Cable Length 1670 m  
 Group Interval 67 m  
 Shot Point Interval 134 m  
 Average Shot Offset 160 m  
 Charge Size 50 lb  
 Average Seis. Depth 12 m

**RECORDING PARAMETERS**  
 System 9000  
 Record Length 5-0  
 Sample 2ms  
 GAGC Trip 0.78s Rate 80db/s  
 Init 4.0 db Final 100db  
 Filter Hi 75 cps, 24db/oct  
 Lo 6 cps, 24db/oct  
 2ms Anti Alias Filtering

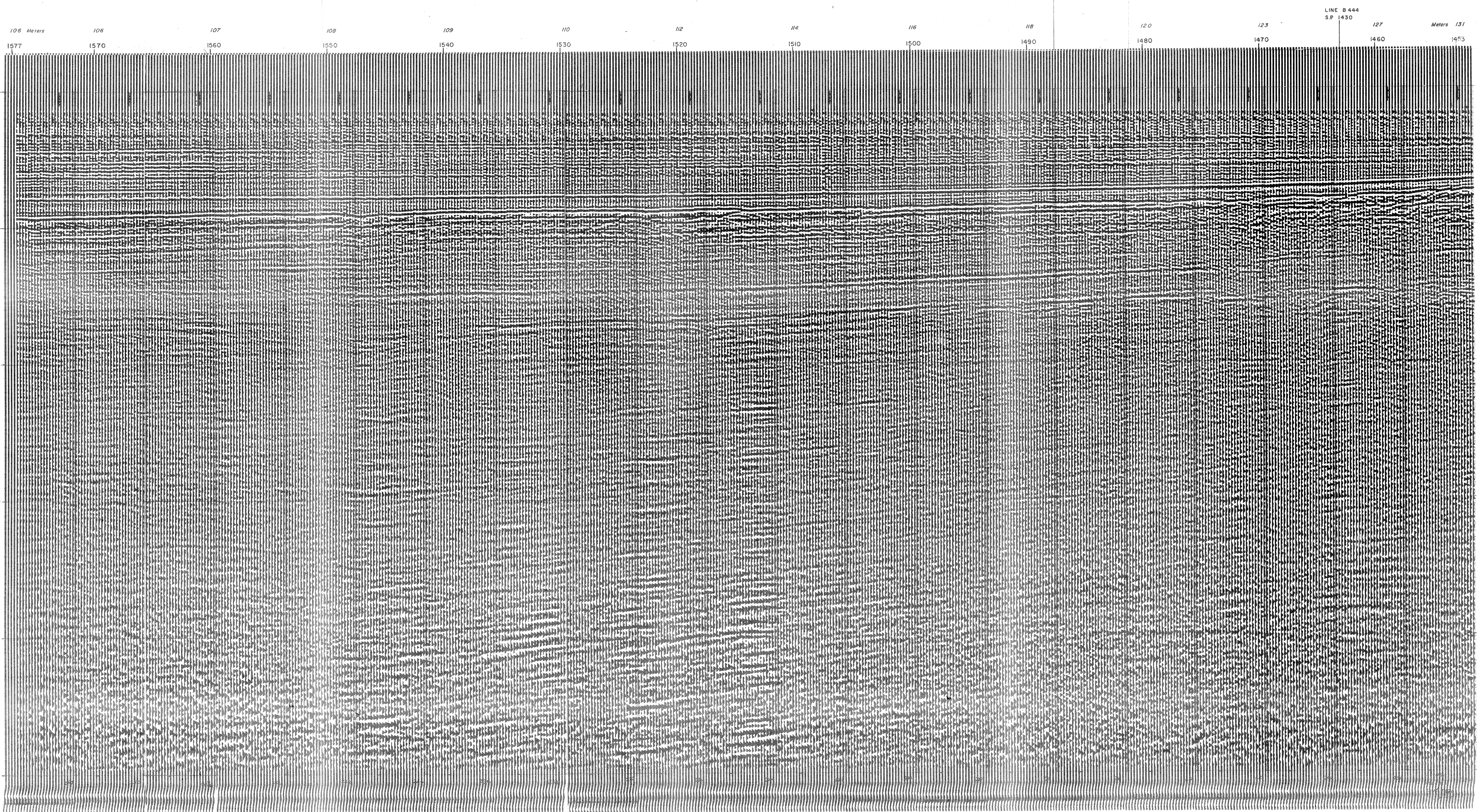
**SEIS EDIT & NMO**  
 TAR  
 $\omega$  4.0 db/sec  
 From 0 sec to 4.0 sec  
 Water Velocity 1522 mps  
 Replacement Vel. 1522 mps

**DECONVOLUTION**  
 Time Invariant ARD I  
 Filter Length .252 sec  
 Gate Length 2.6 sec  
 No of Gates/Trace 1  
 Initial times, Gate No 1 -  
 Tr1 1.5 sec, Tr2 4.488 sec  
 Final times, Gate No 1 -  
 Tr1 4.1 sec, Tr2 4.508 sec

**6-FOLD STACK**  
 Optimum Wide Band Stack  
 RRMO Yes, Diversity Stack Yes  
 First Break Suppression  
 T<sub>1</sub> 0 sec T<sub>2</sub> 1.2 sec  
 T<sub>3</sub> 0.6 sec T<sub>4</sub> 1.4 sec  
 T<sub>5</sub> 1.0 sec T<sub>6</sub> 1.6 sec



<b>DISPLAY</b>	REQ. N°	L-4075
Analog Filters OUT-OUT	Section N°	1051C
Straight Gate	System Code	MSTV-2
+12 +0 -18 -6	Assembled by	FREDDY
Tapes HTL 1126	Checked by	
HTL		



LINE 8444  
 S.P. 1430

NE