

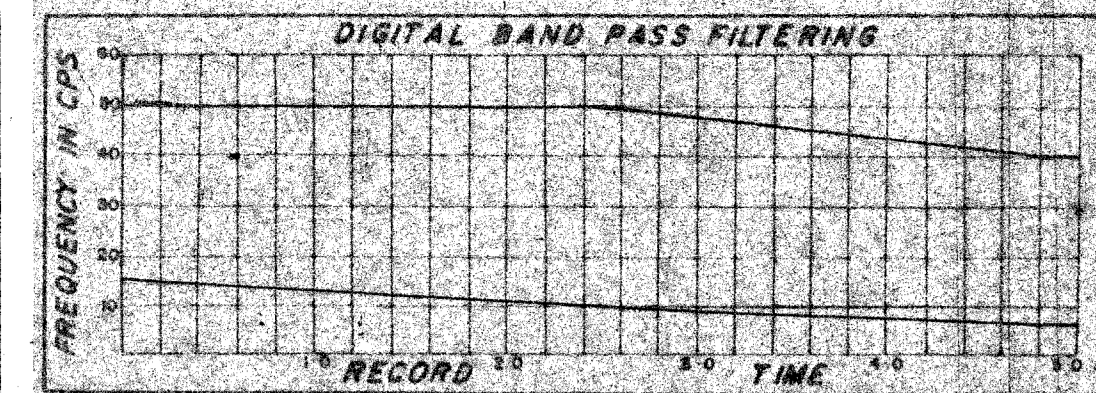
SHOOTING PARAMETERS
 6-Fold Off End
 Shot by G.S.I. PTY 906
 Cable Length 1600 m
 Group Interval 67 m
 Shot Point Interval 134 m
 Average Shot Offset 160 m
 Charge Size 50 lb
 Average Seis. Depth 12 m

RECORDING PARAMETERS
 System 9000
 Record Length 5.0
 Sample 2 ms
 GAGC Trip 78 Rate 80db/s
 Int 4.0 db Final 100db
 Filters Hi 75cps 24db/oct
 Lo 6cps 24db/oct
 2ms Anti Alias Filtering

SEIS EDIT & NMO
 TAR
 4.0 db/sec
 From 0 sec to 4.0 sec
 Water Velocity 1522 m/s
 Replacement Vel. 1522 m/s

DECONVOLUTION
 Time Variant ARD I
 Filter Length 22 sec
 Gate Length 2.2 sec
 No of Gates/Trace 2
 Initial times, Gate No 1 :-
 Tr 1 1.5 sec, Tr 2 4.0-4.88 sec
 Final times, Gate No 2 :-
 Tr 1 4.8 sec, Tr 2 4.3-7.88 sec

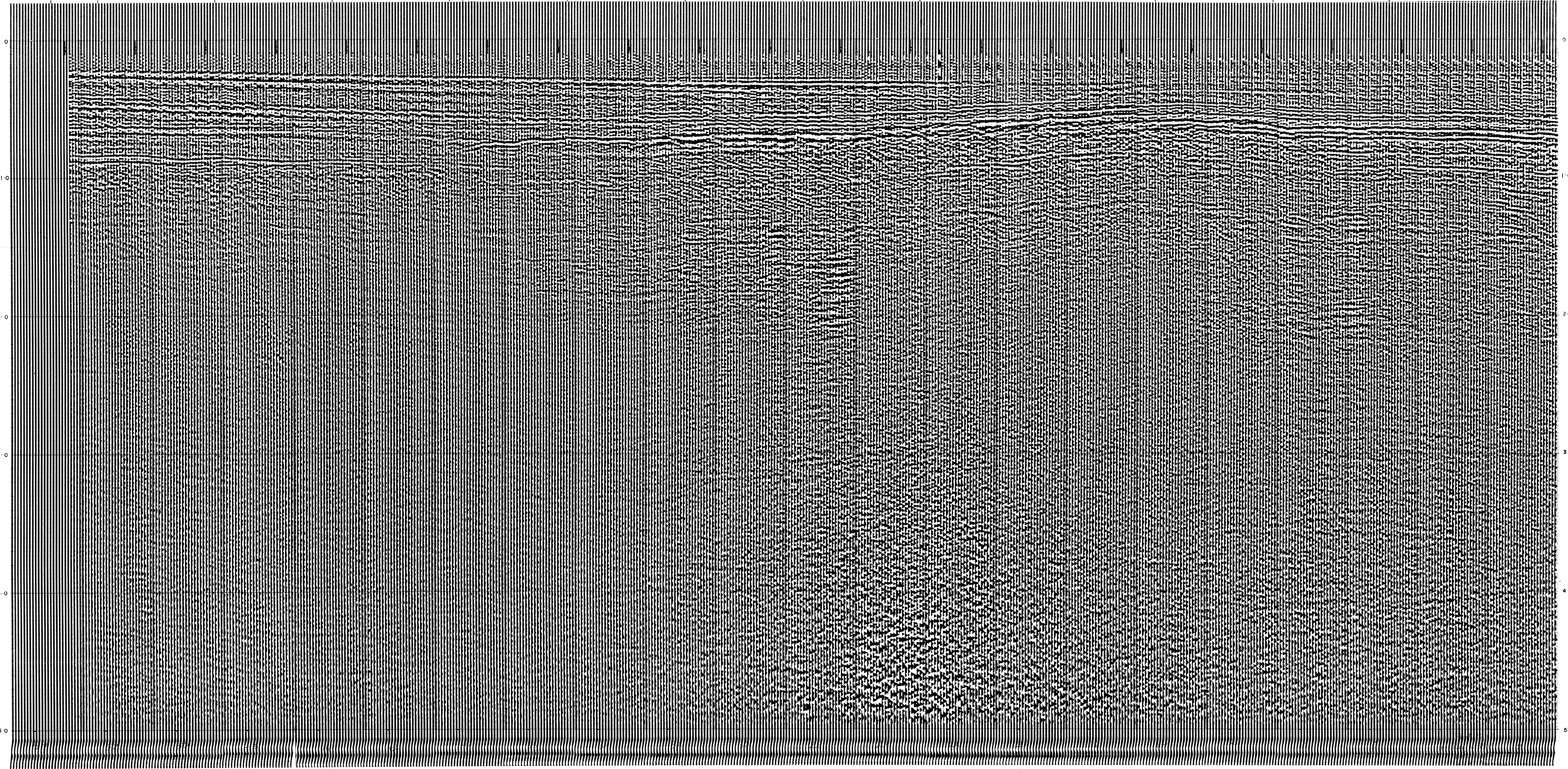
6-FOLD STACK
 Optimum Wide Band Stack
 RNMO Yes, Diversity Stack Yes
 First Break Suppression:
 T₁ 0 sec T₂ 1.2 sec
 T₃ 0.6 sec T₄ 1.4 sec
 T₅ 1.0 sec T₆ 1.6 sec



DISPLAY
 Analog Filters: OUT - OUT
 Straight: On
 10 - 4 - 22 - 0
 Types: HTL NO2
 HTL

REQ. N°	L-3919
Section N°	1043 C
System Code	MSTV-2
Assembled by	M.A. Ferlon
Checked by	[Signature]

22 23 Meters 25 28 33 41 51 59 68 71 75 81 83 84 84
 584 580 570 560 550 540 530 520 510 500 490 480 470 460 457



N.E.