

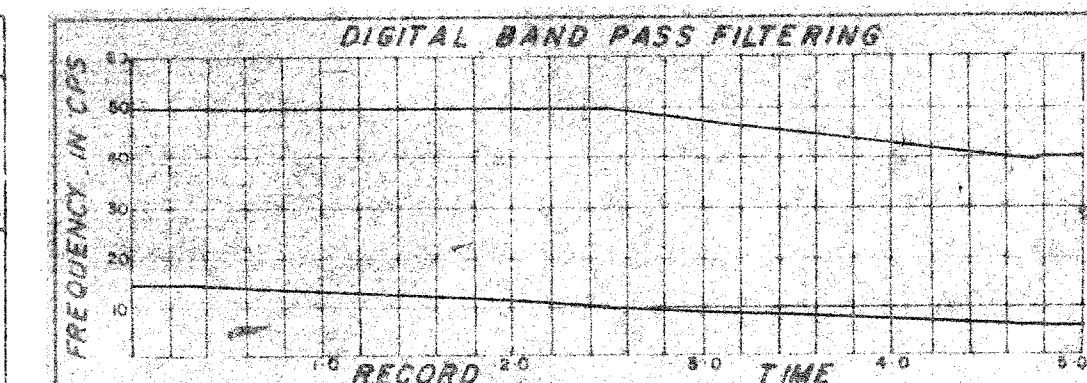
SHOOTING PARAMETERS	
12-Fold Off End	
Shot by GSI PTY 906	
Cable Length 1600 m	
Group Interval 67 m	
Shot Point Interval 134 m	
Average Shot Offset 160 m	
Charge Size 50 lb	
Average Sea Depth 13 m	

RECORDING PARAMETERS	
System 9000	
Record Length 5.0	
Sample 2ms	
GAGC Trip 078 Rate 80db/s	
Int 46 db/Final 100db	
Filters Hi 75 cps 24db/oct	
Lo 8 cps 24db/oct	
2ms Anti Alias Filtering	

SEIS EDIT & NMO	
TAR	
Water Velocity 1522 mps	
Replacement Vel 1522 mps	

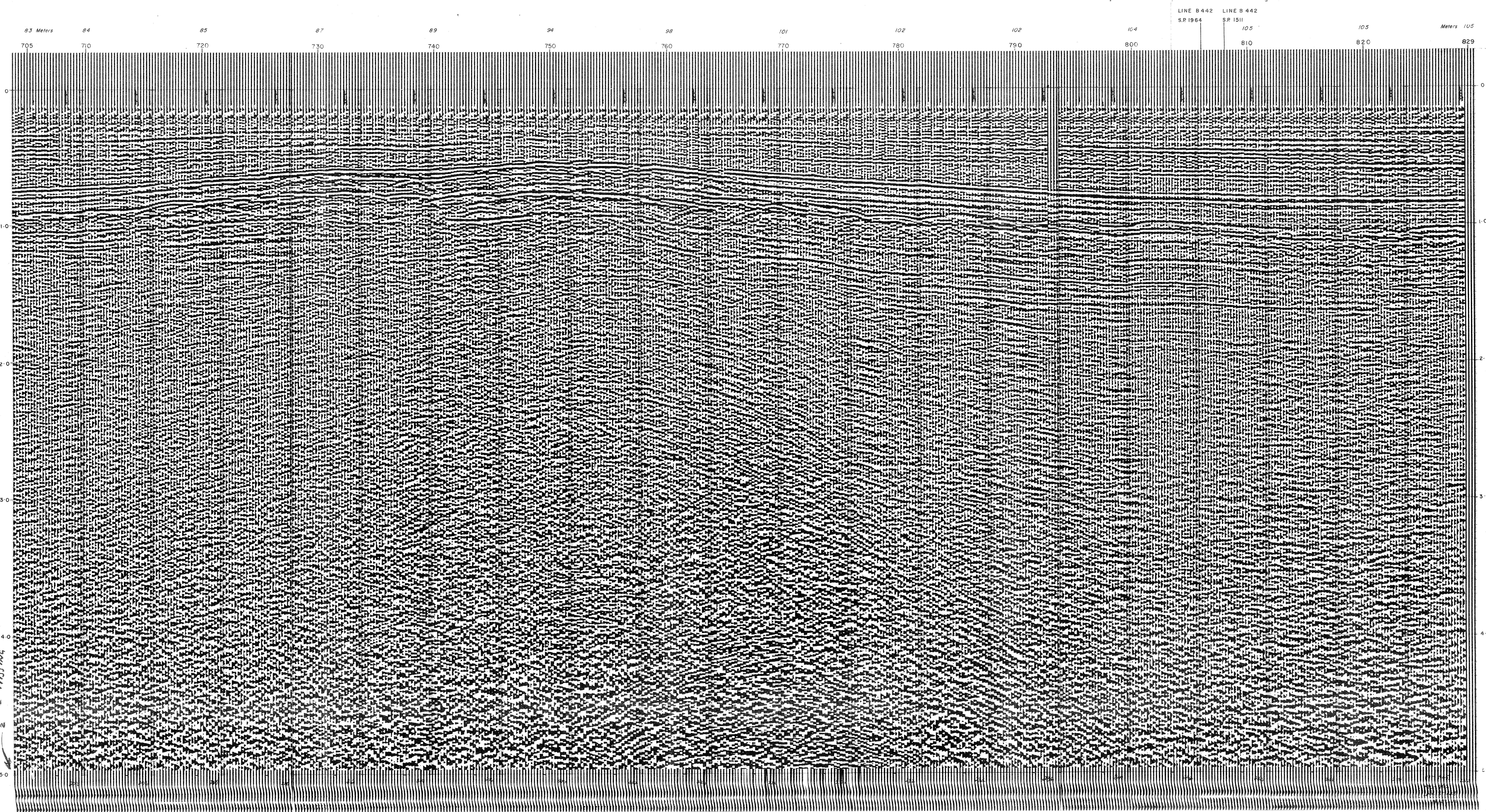
DECONVOLUTION	
Time variant ARD I	
Filter Length .22 sec	
Gate Length 2.2 sec	
Nº of Gates/Trace 2	
Initial Times, Gate Nº 1	
Tr1 1.5 sec, Tr2 4.480 sec	
Final Times, Gate Nº 2	
Tr1 4.8 sec, Tr2 3.780 sec	

6-FOLD STACK	
Optimum Wide Band Stack	
RRMO Yes, Diversity Stack Yes	
First Break Suppression	
T ₁ 0 sec T ₂ 1.2 sec	
T ₃ 0.6 sec T ₄ 1.4 sec	
T ₅ 1.0 sec T ₆ 1.6 sec	



DISPLAY		REQ. Nº	L-3950
Analog Filters	OUT-OUT	Section Nº	1045 C
Straight Gun	+18 +0 -14 + +4	System Code	MSTV-2
Tapes HTL 1102		Assembled by	MHR/L
HTL		Checked by	AC

J.N.E.



1/2 TL MISSING