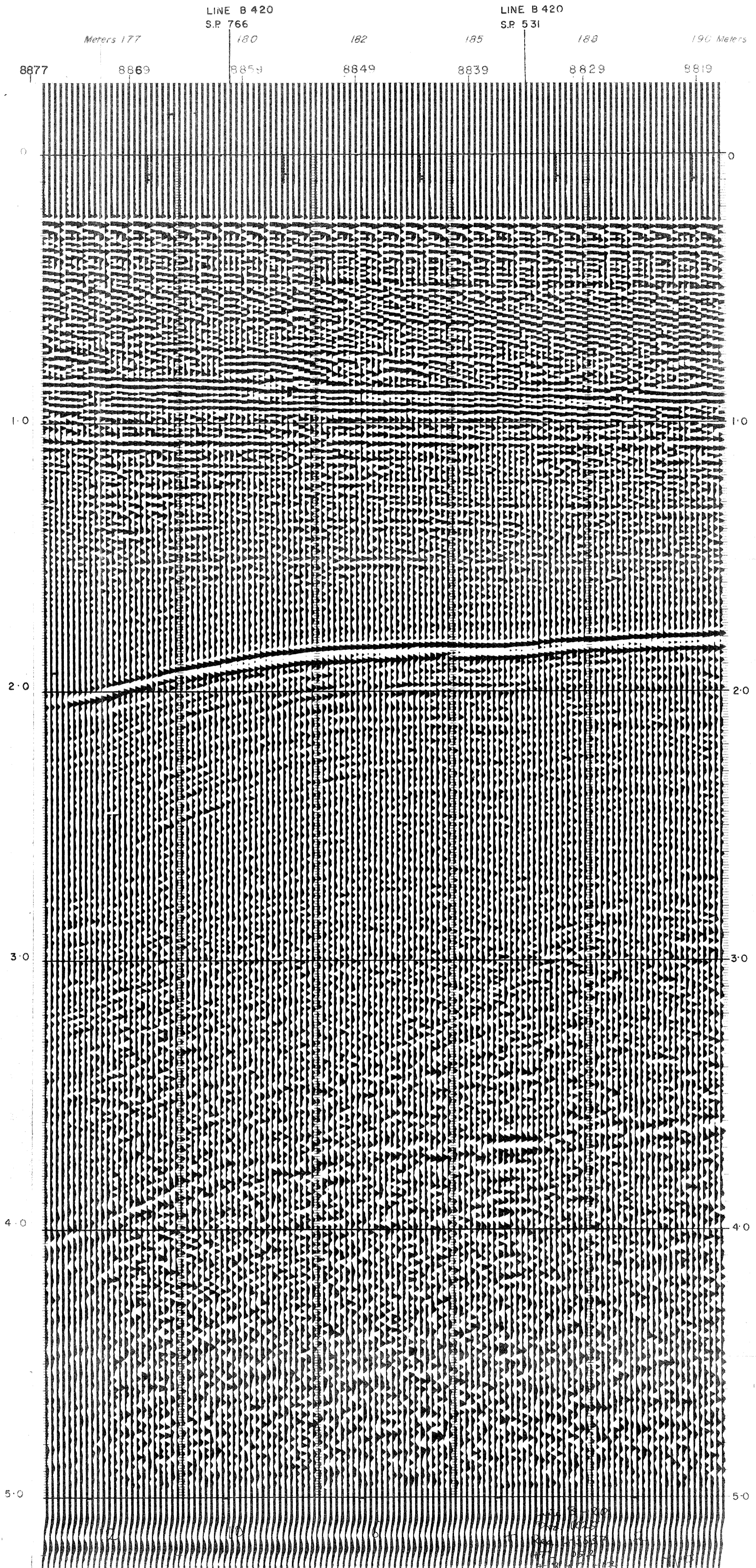


REQ. N°	L-3634
Section N°	1025 C
System Code	MSTV-2
Assembled by	M.A. Tenta
Checked by	G.S.

\ NE



**SHOOTING PARAMETERS**

12 Fold Off End  
 Shot by GSI PTY 906  
 Cable Length 2400 m  
 Group Interval 100 m  
 Shot Point Interval 100 m  
 Average Shot Offset 60m  
 Charge Size 33 lb  
 Average Seis Depth 12 m

**RECORDING PARAMETERS**

System 9000  
 Record Length 5.0  
 Sample 2ms  
 GAGC Trip 0.78 s Rate 80db/s  
 Init 40 db.Final 100db  
 Filters Hi 75 cps 24db/oct  
 Lo 8cps 24db/oct  
 2ms Anti Alias Filtering

**SEIS EDIT & NMO**

TAR

K 4.0 db/sec  
 From 0 sec to 4.0 sec

Water Velocity 1522 mps  
 Replacement Vel. 1522 mps.

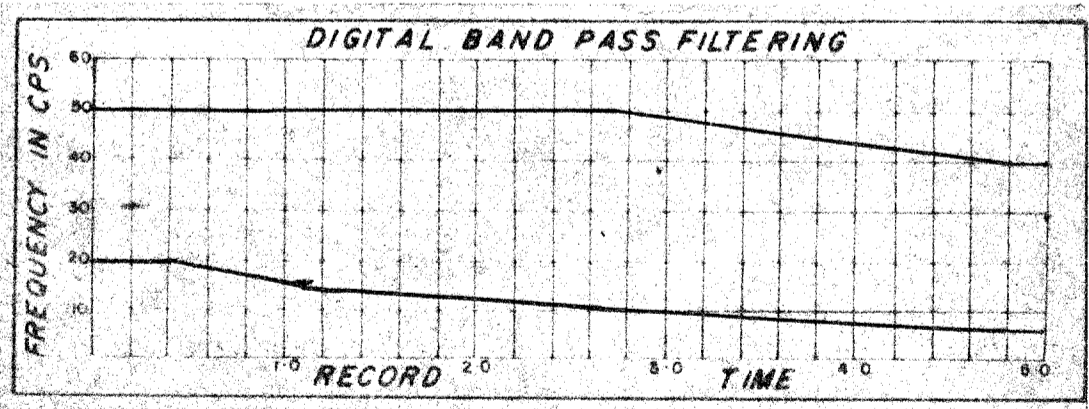
**DECONVOLUTION**

Time invariant ARD I  
 Filter Length 0.252 sec  
 Gate Length 2.7 sec  
 No of Gates/Trace 1  
 Initial times, Gate No 1 :-  
 Tr 1: 7 sec, Tr 2: 40-504 sec  
 Final times, Gate No 1 :-  
 Tr 1: 4 sec, Tr 2: 43-204 sec

**6-FOLD STACK**

Optimum Wide Band Stack  
 Mult. Atten. (1) sec  
 (2) sec  
 RNMO Yes. Diversity Stack Yes

First Break Suppression  
 T<sub>1</sub> 0 sec T<sub>2</sub> 1.2 sec  
 T<sub>2</sub> 0.8 sec T<sub>3</sub> 1.4 sec  
 T<sub>3</sub> 1.0 sec T<sub>4</sub> 1.6 sec



**DISPLAY**

Analog Filters OUT-OUT  
 Straight Gain  
 +18 +0 +12 = +30

Tapes HTL 1052  
 HTL