

SHOOTING PARAMETERS	
12-Fold, Off-End	
Shot by G.S.I. Ply 906	
Cable Length 2400m	
Group Interval 100m	
Shot Point Interval 100m	
Average Shot Offset 96m	
Charge Size 50lb	
Average Seis Depth 15 m	

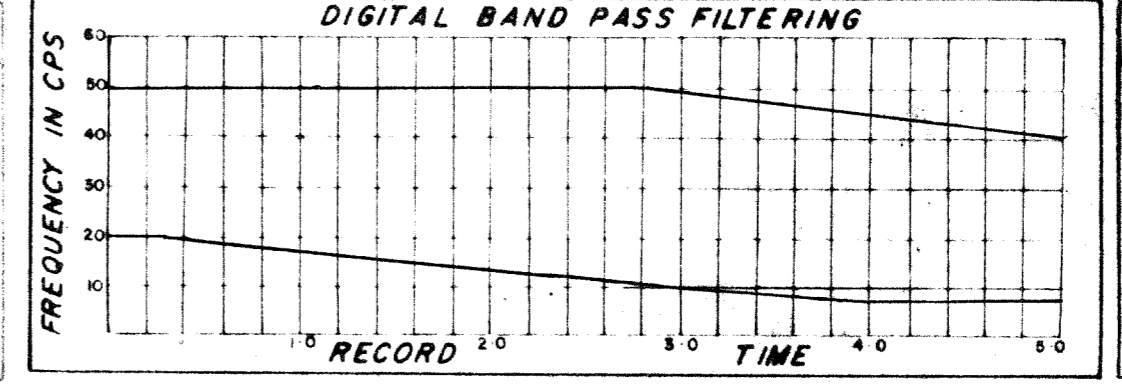
RECORDING PARAMETERS	
System 9000	
Record Length 5.0 sec	
Sample 2 ms	
GAGC Trip 78s Rate 80db/s	
Init 43db Final 100db	
Filters Hi 75cps 24db/oct	
Lo 8cps 24db/oct	
2 ms Anti-Alias Filtering	

SEIS EDIT & NMG	
TAR Applied	
Equalization 20 -4 5 sec	
Water Velocity 1524 m/sec	
Replacement Vel 1524 m/sec	

DECONVOLUTION	
Time Invariant ARD I	
Filter Length 252 msec	
Gate Length 2600 msec	
No. of Gates / Trace 1	
Initial times, Gate No. 1 -	
Tr. 1 1.8 sec, Tr. 2 4.02 sec	
Final times, Gate No. -	
Tr. 1 4.4 sec, Tr. 2 3.02 sec	

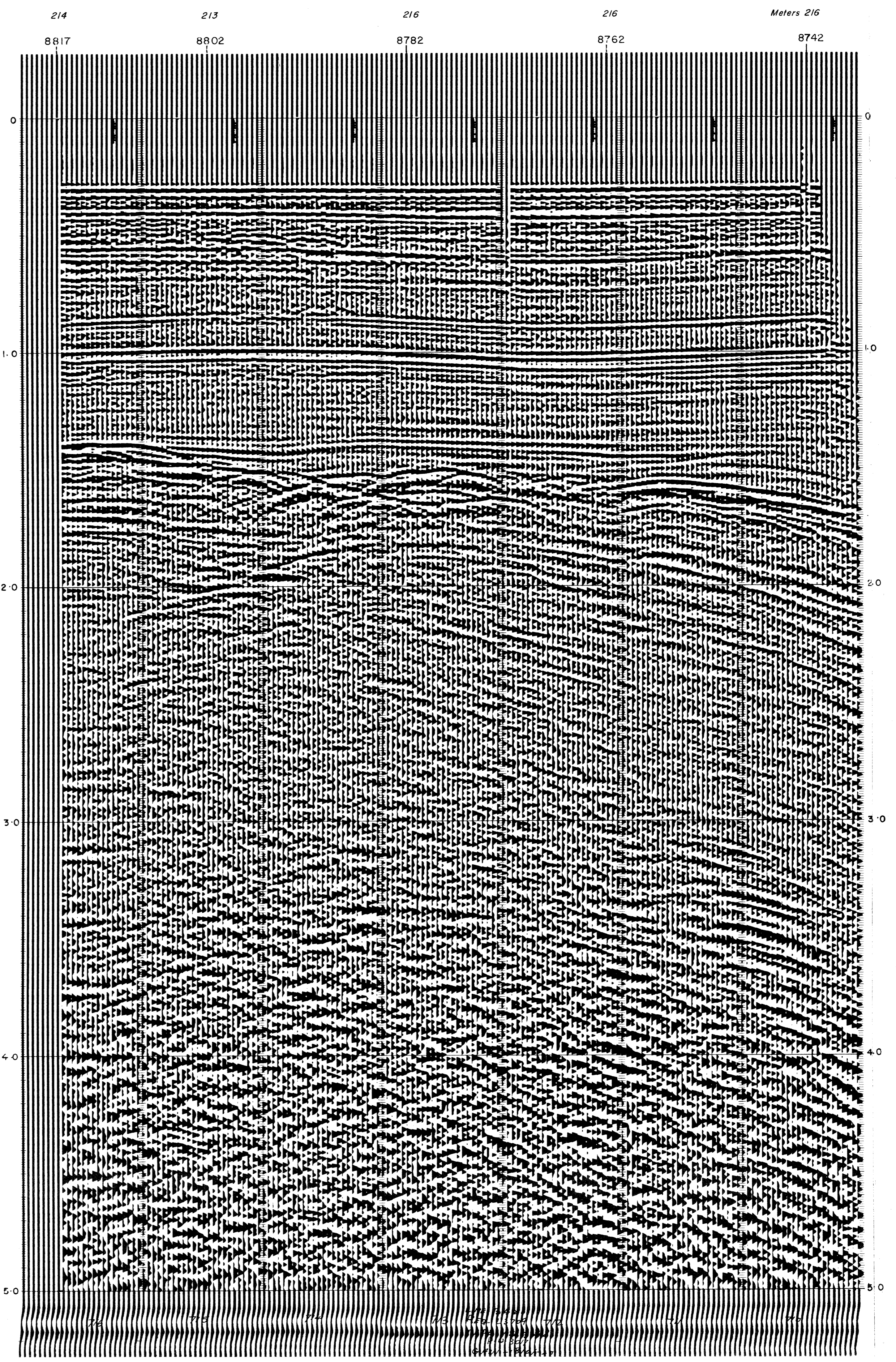
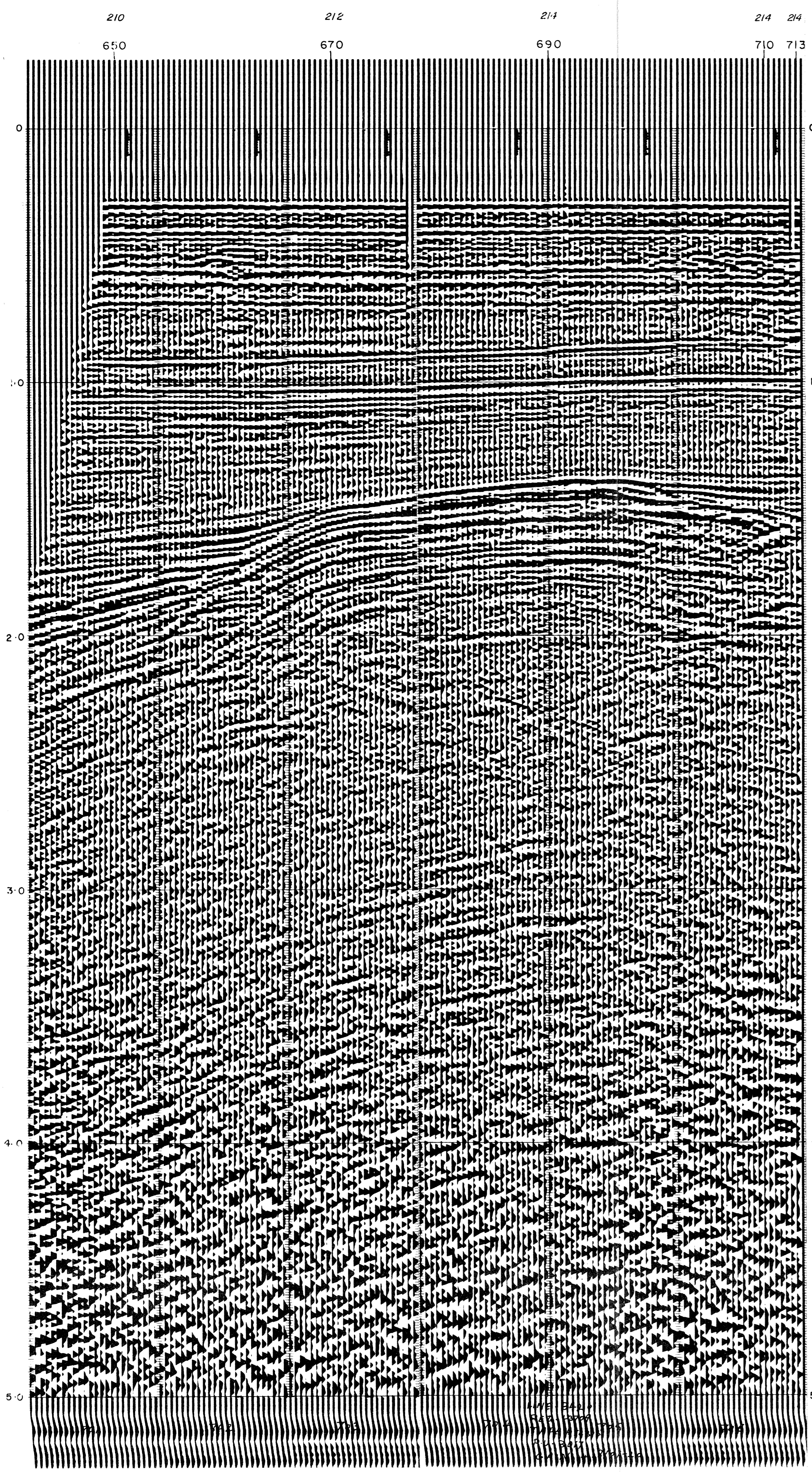
12-FOLD STACK	
First Break Suppression	
0.2 - 1.6 sec	
0.6 - 2.0 sec	
1.0 - 2.1 sec	
1.2 - 2.2 sec	
1.4 - 2.3 sec	
1.6 - 2.4 sec	
Equalization 0.8 - 4.0 sec	

DIGITAL FILTERING	
Time Varying YES	
Filter Length 136 ms	
Sample Period 4 ms	
Record Length 5 sec	



DISPLAY	
Single Coverage	
Analog Filters OUT-OUT	
Straight Gain in db	
+18 +0 -20 = -2	
Tapes HTL-3048	
HTL-3	

REQ. N°	L-
System Code	MEDS-3A
Section N°	3017 C
Assembled by	Mold
Checked by	193



NE.