

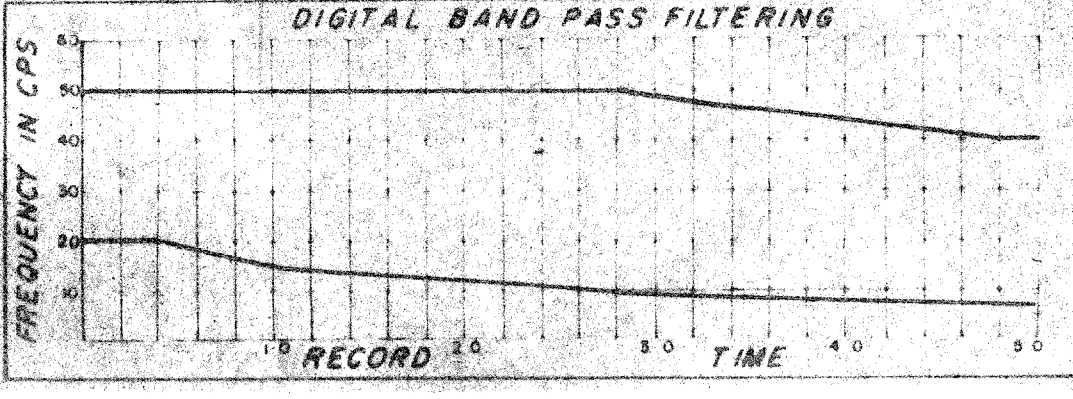
SHOOTING PARAMETERS
 6-Fold Off End
 Shot by G.S.I. PTY 903
 Cable Length 1600 m
 Group Interval 67 m
 Shot Point Interval 134 m
 Average Shot Offset 160m
 Charge Size 50 lb
 Average Seis. Depth 14 m

RECORDING PARAMETERS
 System 10,000
 Record Length 5.0 secs
 Sample 2 ms
 GAGC Trip 0.52s Rate 80 db/s
 Int 41 db Final 100 db
 Filters Hi 70 cps 24 db/oct
 Lo 8 cps 24 db/oct
 2ms Anti Alias Filtering

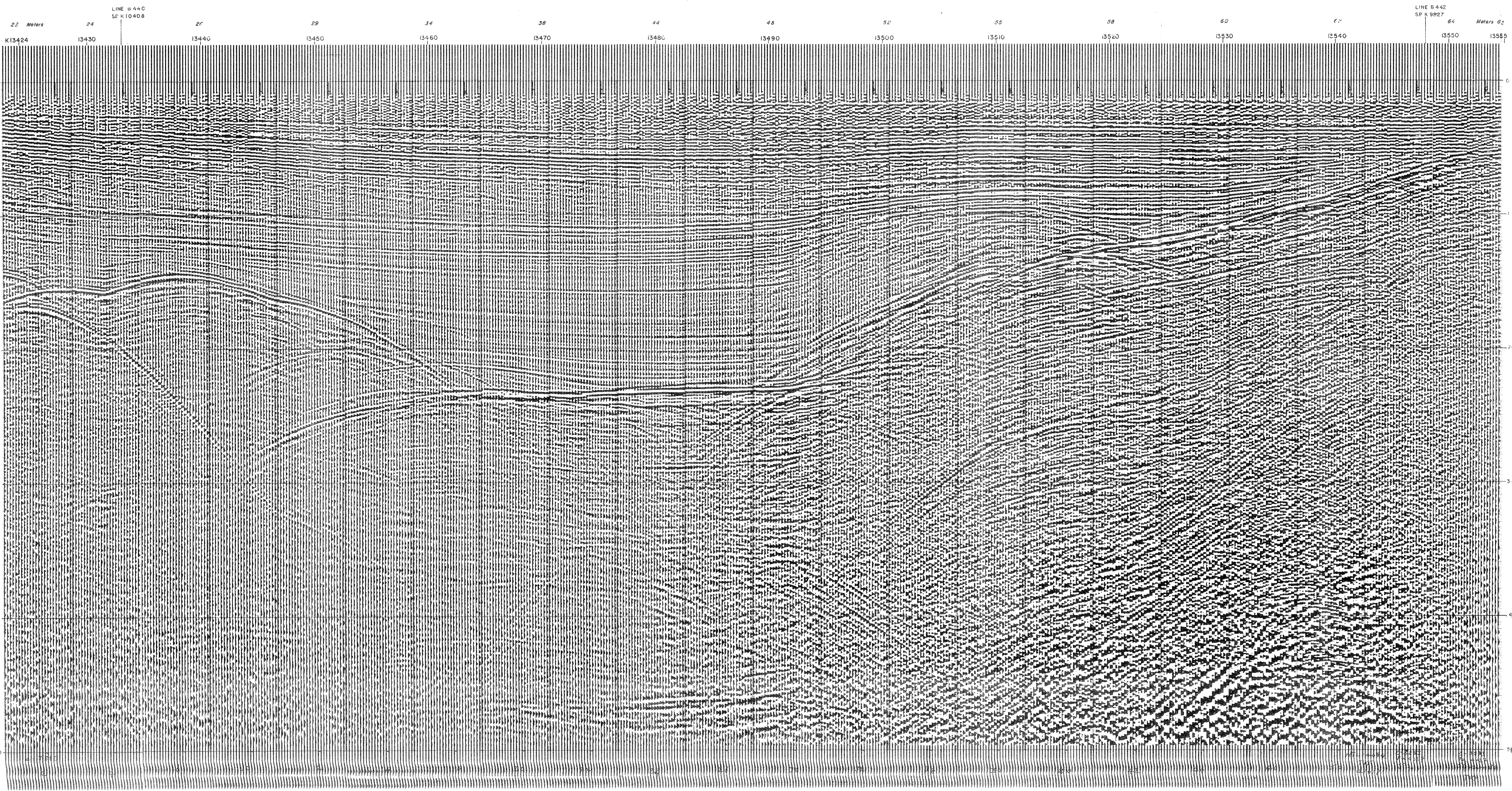
SEIS. EDIT & NMO
 T&R
 sec = 4.0 db/sec
 From 0 sec to 4.0 sec
 Water Velocity 1524 mps
 Replacement Val 1524 mps

DECONVOLUTION
 Time Varying ARO1
 Filter Length 220 msec
 Gate Length 220 msec
 No of Gates/Trace 2
 Initial times, Gate No 1
 Tr 1 2.5 sec, Tr 2 4.0-46 sec
 Final times, Gate No 2
 Tr 1 4.5 sec, Tr 2 4.5-75 sec

6-FOLD STACK
 Optimum Wide Band Stack
 RNMO Yes, Diversity Stack Yes
 First Break Suppression
 T₁ 0 sec T₂ 0.8 sec
 T₃ 0.4 sec T₄ 1.0 sec
 T₅ 0.6 sec T₆ 1.4 sec



DISPLAY		REQ. N°	L-3883
Analog Filters OUT-OUT		Section N°	4027C
Straight Gain +12 +0 -8 +4		System Code	MSTV-2
Tapes HTL 4064 HTL		Assembled by	R. Keli
		Checked by	C. P. ...



LINE B 442
 SP K 9827
 64 Meters 65