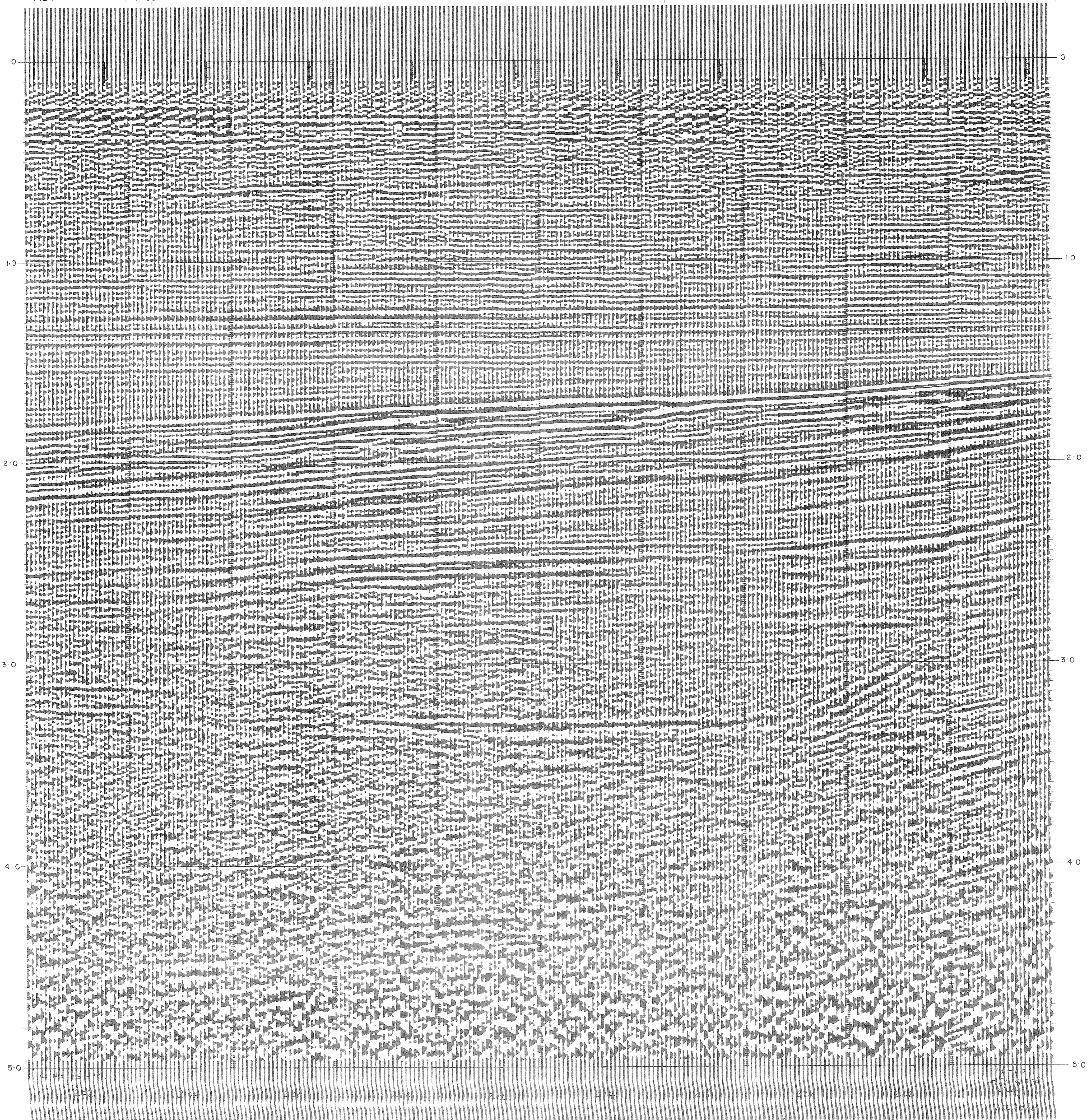


DISPLAY
 Analog Filters OUT - OUT
 Straight Gain
 +12 + 0 - 0 = +12
 Tapes HTL 4008
 HTL

REQ N° L-3288
 Section N° 4011C
 System Code MSTV-2
 Assembled by *K.S. Farin*
 Checked by *D. P. ...*

LINE 8444
 S.P. 1141
 Meters 71 71 71 71 71 71 70 70 Meters
 4424 4430 4440 4450 4460 4470 4480 4483



SHOOTING PARAMETERS
 6-Fold Off End
 Shot by G.S.I. PTY 903
 Code Length 1600 m
 Group Interval 67 m
 Shot Point Interval 13.4 m
 Average Shot Offset 160m
 Charge Size 33/3 lb
 Average Sigs Depth 16 mts

RECORDING PARAMETERS
 System 10,000
 Record Length 5.0 secs
 Sample 2 ms
 GAGC Trip 0.475 Rate 80 db/s
 Int 45 db/Incl 00 db
 Filters Hi 70 cps 24 db/oct
 Lo 8 cps 24 db/oct
 2ms Anti Alias Filtering

SEIS EDIT & MW
 TAR
 Ek = 4.0 db/sec
 Frgm 0 sec to 4.0 sec
 Water Velocity 1524 mps
 Replacement Vel 1524 mps

DECONVOLUTION
 Time Varying ARF 1
 Filter Length 2.12 msec
 Gate Length 2220 msec
 No of Gates/Trace 2
 Initial Times Gate No 1
 Tr 1 2 sec, Tr 2 0.45 sec
 Final Times Gate No 2
 Tr 1 4.5 sec, Tr 2 3.76 sec

6-FOLD STACK
 Optimum Wide Band Stack
 RMMO Yes, Diversity Stack No
 First Break Suppression
 T₁ 0.4 sec T₂ 0.8 sec
 T₃ 0.4 sec T₄ 1.0 sec
 T₅ 0.6 sec T₆ 1.2 sec

