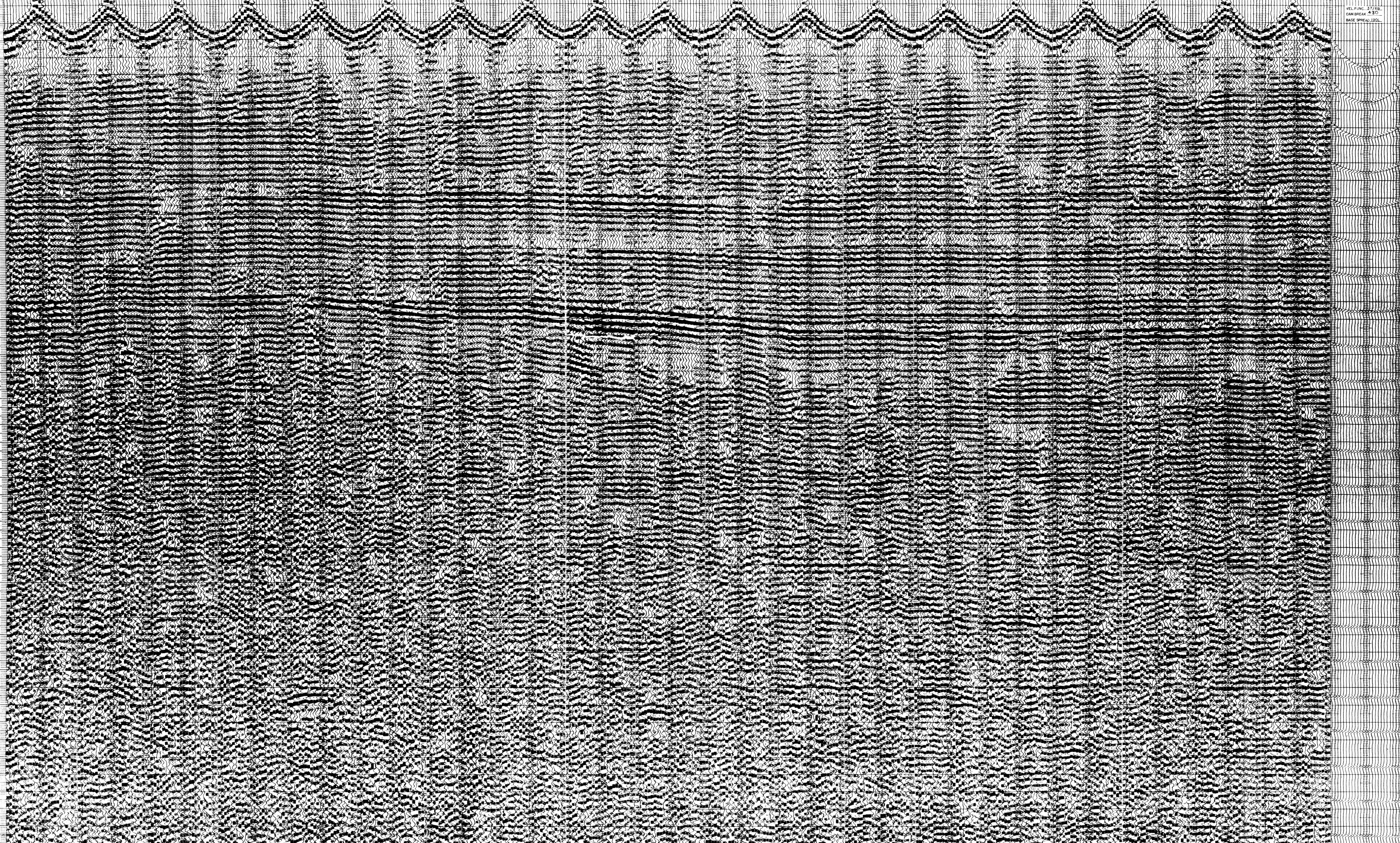


SOUTHEAST

Western GEOPHYSICAL COMPANY
 LINE 237
 SP 307 MSP 289
 PROGRAMMED SYSTEMS
 AYC MED CRT C
 FILTER CVHC-30
 100% SHORT CABLE
 CLIENT AGP

Western GEOPHYSICAL COMPANY
 LINE 237
 SP 307 MSP 289
 PROGRAMMED SYSTEMS
 AYC MED CRT C
 FILTER CVHC-30
 100% SHORT CABLE
 CLIENT AGP

237-307 237-306 237-305 237-304 237-303 237-302 237-301 237-300 237-299 237-298 237-297 237-296 237-295 237-294 237-293 237-292 237-291 237-290 237-289



0.4
0.8
1.2
1.6
2.0
2.4
2.8
3.2
3.6
4.0
4.4
4.8
5.2
5.6
6.0
6.4
6.8
7.2
7.6
8.0
8.4
8.8
9.2
9.6
10.0

0.4
0.8
1.2
1.6
2.0
2.4
2.8
3.2
3.6
4.0
4.4
4.8
5.2
5.6
6.0
6.4
6.8
7.2
7.6
8.0
8.4
8.8
9.2
9.6
10.0