

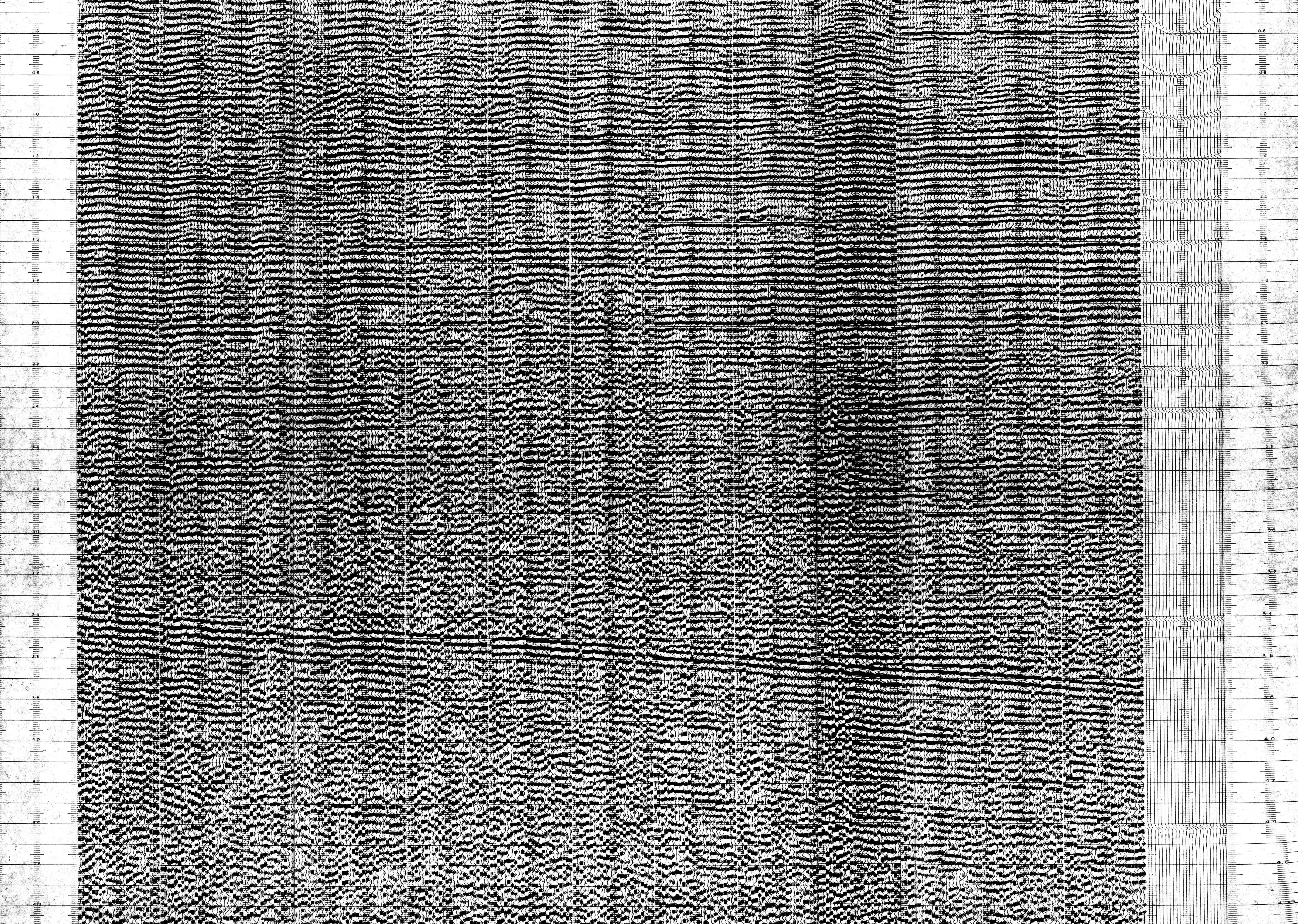
NORTHEAST

219 = 111 219 = 110 219 = 109 219 = 108 219 = 107 219 = 106 219 = 105 219 = 104 219 = 103 219 = 102 219 = 101 219 = 100 219 = 99

Western GEOPHYSICAL COMPANY  
LINE 219  
SP. 111 - SP. 99  
PROSPECT ADRIATIC  
AVC. MED. CRT. C  
FILTER CFV  
100% SHORT CABLE  
CLIENT AGIP

VEL. FUNC. 31/60  
CAM BREAK 400  
BASE SPREAD 1400

Western GEOPHYSICAL COMPANY  
LINE 219  
SP. 111 - SP. 99  
PROSPECT ADRIATIC  
AVC. MED. CRT. C  
FILTER CFV  
100% SHORT CABLE  
CLIENT AGIP



0.4  
0.6  
0.8  
1.0  
1.2  
1.4  
1.6  
1.8  
2.0  
2.2  
2.4  
2.6  
2.8  
3.0  
3.2  
3.4  
3.6  
3.8  
4.0  
4.2  
4.4  
4.6  
4.8  
5.0  
5.2  
5.4  
5.6  
5.8  
6.0  
6.2  
6.4  
6.6  
6.8  
7.0  
7.2  
7.4  
7.6  
7.8  
8.0  
8.2  
8.4  
8.6  
8.8  
9.0  
9.2  
9.4  
9.6  
9.8  
10.0

0.4  
0.6  
0.8  
1.0  
1.2  
1.4  
1.6  
1.8  
2.0  
2.2  
2.4  
2.6  
2.8  
3.0  
3.2  
3.4  
3.6  
3.8  
4.0  
4.2  
4.4  
4.6  
4.8  
5.0  
5.2  
5.4  
5.6  
5.8  
6.0  
6.2  
6.4  
6.6  
6.8  
7.0  
7.2  
7.4  
7.6  
7.8  
8.0  
8.2  
8.4  
8.6  
8.8  
9.0  
9.2  
9.4  
9.6  
9.8  
10.0