

PETROMARINE ITALIA Sp.A.

Well: VIRGINIA 1

08 5/2006

COORDINATES : Lat. 42°45'17"240 N
Long. 14°53'32"313 E

TYPE OF WELL : WILDCAT
RIG : IDECO 2500 (SCARABEO II°)

ELEVATION : R.T.E. 33 m
Bottom sea -215 m

SPUD. DATE : 21.08.88
FINISHED DRILLING : 05.09.88

PERMIT : B.R. 181. SE

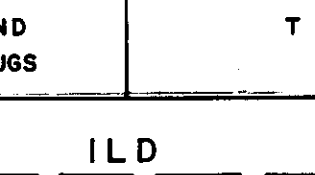
TOTAL DEPTH : Drilling 1856 m
log 1854 m

PROVINCE : ADRIATIC SEA ZONE "B"

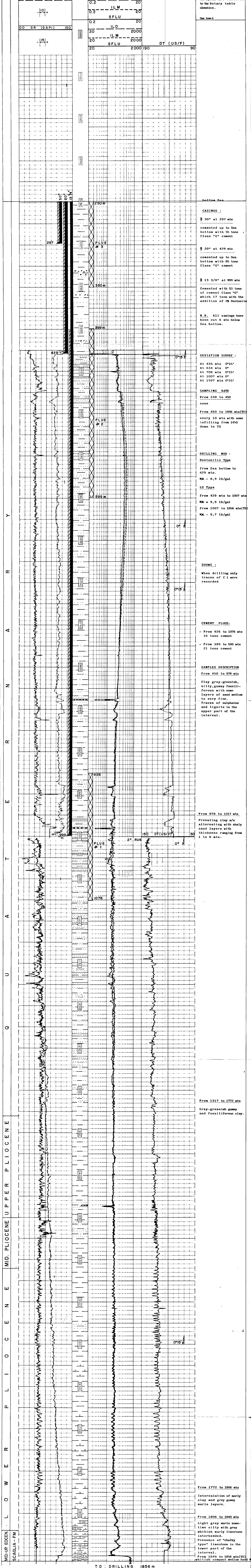
STATUS : DRY HOLE

U.N.M.I. : ROMA

PRODUCING INTERVAL : _____



SCALE 1:1000



T D : DRILLING 1856 m
T D : LOG 1854 m

TABLE OF ELECTRICAL LOGS

Type	Runs	Date	From	To	Depth Drilling	Depth Log	Seinity of mud	Scale	Remarks
DIL/SLS/CR	1	Aug.-30,88	429,5	1006,8	1007	1007,8	17 3/4" 3000 ppm Bentonitic type 3600 ppm	1/200 - 1/1000	
DIL/SLS/CR	2	Sept 5, 88	999,2	1853	1856	1854	12 1/4" lignosulphonate 3300 ppm	1/200 - 1/1000	
SHOT	2	Sept 5, 88	999,2	1843	1856	1854	12 1/4" lignosulphonate 3300 ppm	1/200 - 1/1000	
WSTA	1	Sept 6, 88	540	1843	1856	1854	12 1/4" lignosulphonate	1	20 check shots
CYBERDIP	1	Sept 6, 88	999,2	1843	1856	1854	12 1/4"	1/200 - 1/1000	