



TRAINA 1

VI-II-1B

rig: NT 20
location: VALLE TUMARRANO
coordinates: 37°37'43" 1°17'34"
date spudded: 19-AUG.
date completed: 7-SEPT-59

ground elevation: 100
rotary table height: 12"
kdb height: 1"
el. of drive bushing: 100"
final depth: 2360'

3154 BN

117'00



SCALE 1:1000

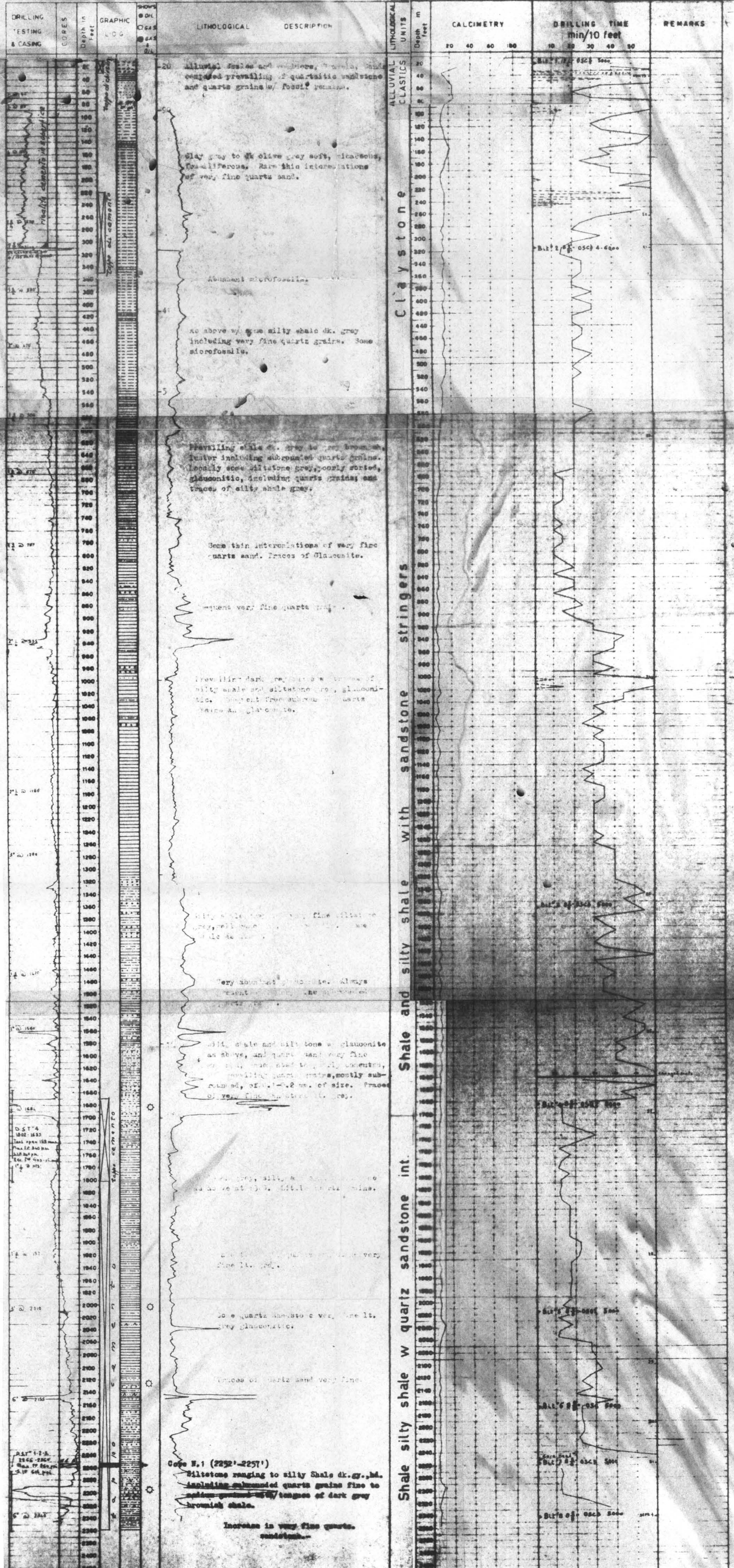


LEGEND

- SAND
- SHALE
- CLAYSTONE & CLAY
- SILTY SHALE
- CONGL. CONCS
- ALLUVIAL
- QUARTZ SANDST.
- SILTSTONE

ATTACHED TO: FINAL REPORT
"TRAINA 1"
By A. MARCARINI A TORRENTE

BARUSA September 59



Cape N.1 (2232'-2257')
Siltstone ranging to silty shale dk. gr. sh. including subrounded quartz grains fine to medium grained - 1/16 to 1/8 in. of size. Traces of very fine sandstone.
Increase in very fine quartz sandstone.