

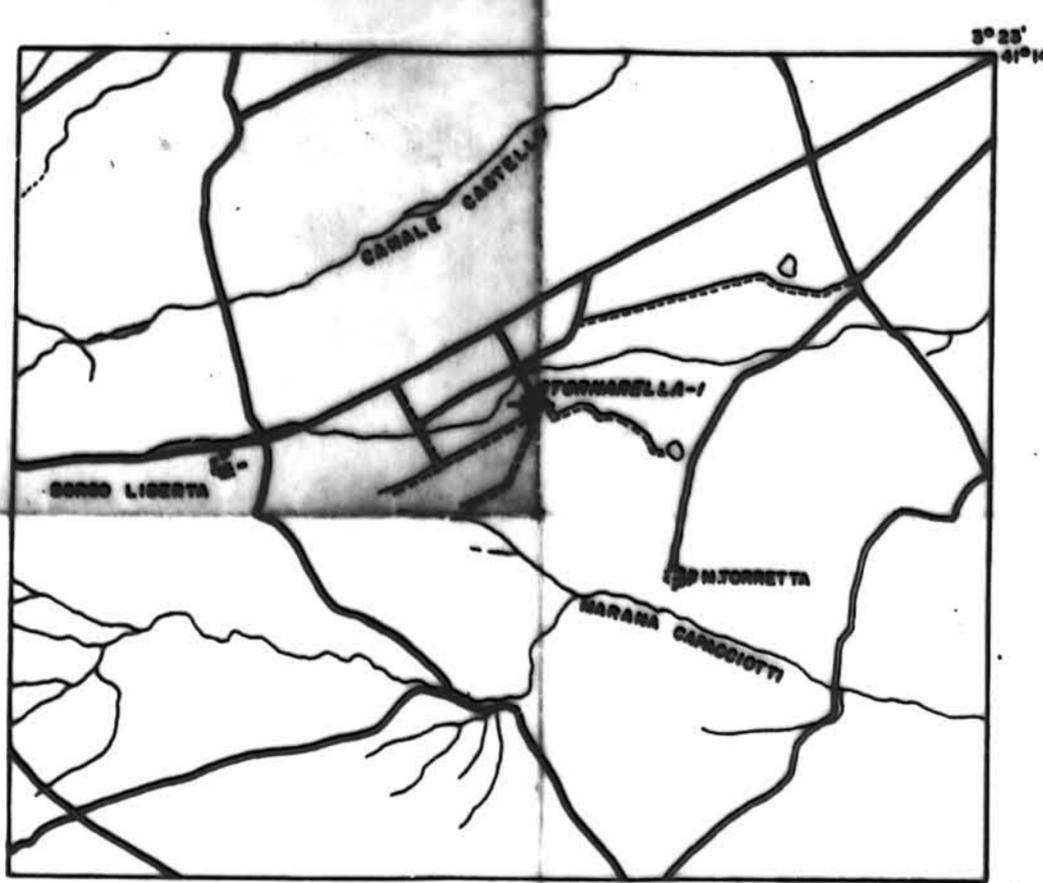


ADRIATIC PETROLEUM CORPORATION
COMPLETION LOG
STORNARELLA NO. 1

SEZIONE IDROCARBURI
 DI NAPOLI
 31 AGO. 1960
 Prot. N. 12784

LOCATION: LATITUDE - 41° 11' 36.5" N
 LONGITUDE - 13° 18' 32.5" E. (Roma M. Mario meridian)
 COUNTRY - ITALY
 CONCESSION - CERIGNOLA
 ELEVATION: GROUND - 210 meters
 DERRICK FLOOR - 212.05 meters
 DATES: SPUDDED - July 16, 1960
 ABANDONED - August 10, 1960

7/1960



VERTICAL SCALE 1:1000

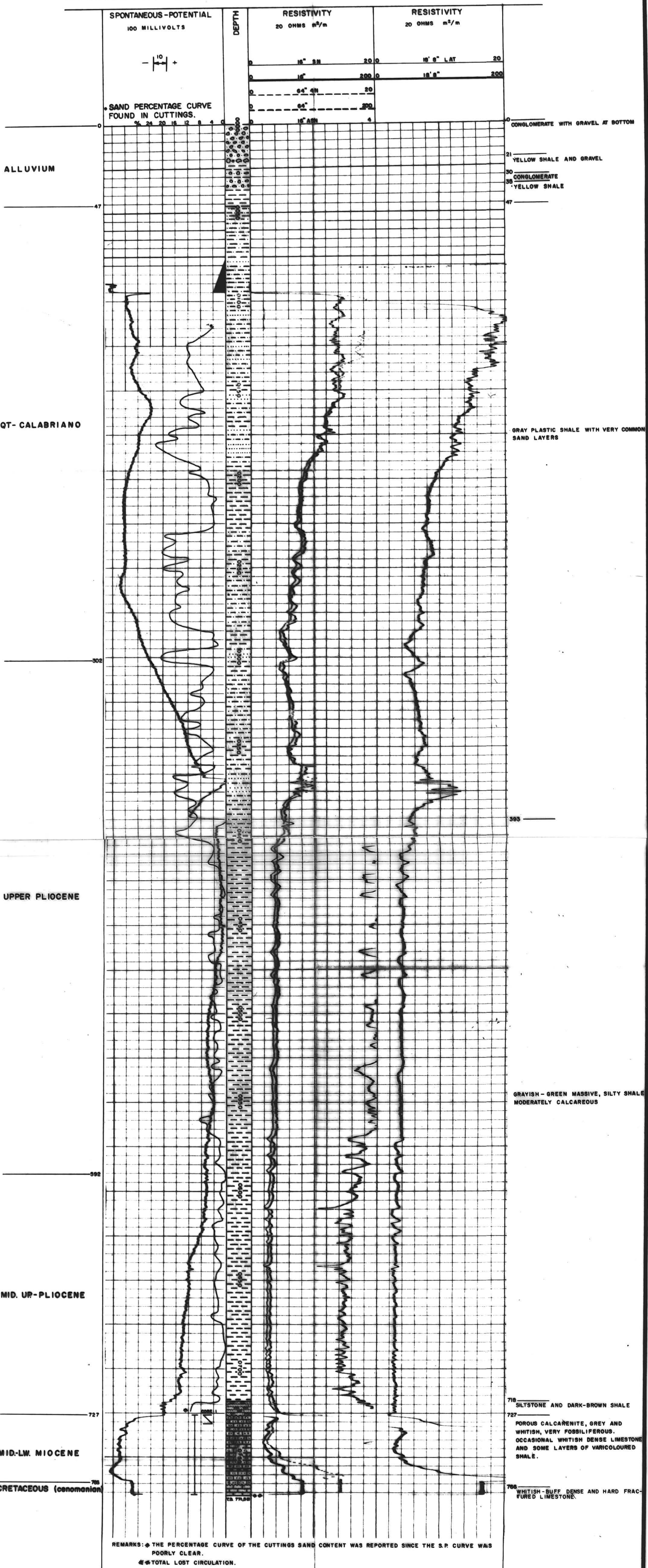
LEGEND

- | | | | | | |
|--|------------------------------------|--|--------------------------|--|----------------------|
| | ALLUVIUM | | CASING POINT | | DIP METER TESTS |
| | QT(CALABRIANO) AND U.S.M. Pliocene | | DRILL STEM TEST INTERVAL | | SIDE WALL CORE |
| | MIOCENE | | CORED INTERVAL | | SHOW OF OIL |
| | CRETACEOUS | | | | SHOW OF GAS |
| | | | | | CEMENTED INTERVALS |
| | | | | | PERFORATED INTERVALS |
| | | | | | OPEN |

RUN NO.	1	2	3	4
DATE	9-8-1960			
FIRST READING	755.2 M.			
LAST READING	99.0 M.			
MET. MEASURED	656.2 M.			
CBS. SCHLUM.	98.0 M.			
CBS. DRILLER	95.55 M.			
DEPTH REACHED	755.5 M.			
BOTTOM DRILLED	755.5 M.			
DEPTH DATUM				
MUD MAT.	ROTARY DRILLING			
MUD DENSITY	1.20			
MUD VISCOSITY	85			
MUD RESIST.	0.88 AT 24.5°C			
MUD RES. SWT.				
MUD PH	11			
MUD WTR. LOSS	7.00 30 MIN.			
MAX. TEMP. °F	LESS THAN 30°C			
BIT SIZE	8.5/8"			
SPCS - AM	16"			
A	8"			
AO	10"			
OPR. RIG TIME	238			
TRUCK NO.	179			
RECORDED BY	SPILLA			
WITNESSED BY	RECHICHI			

- SYMBOLS**
- CONGLOMERATE
 - SHALE
 - SANDY SHALE
 - SILTSTONE
 - LIMESTONE
 - CALCARENITE

REMARKS: The formation water resistivity was measured by samples taken in the drill stem test from 727 meters to the bottom.
 R_w = 1.00 at 24.5°C.
 At the depth of 390 m. was added 30 m.v. leftwards; at the depth of 357 m. was added 20 m.v. leftwards.



REMARKS: * THE PERCENTAGE CURVE OF THE CUTTINGS SAND CONTENT WAS REPORTED SINCE THE S.P. CURVE WAS POORLY CLEAR.
 ** TOTAL LOST CIRCULATION.