



FORO LIBERO

17" 1/2 a m 326 12" 1/4 a m 1004
8" 1/2 a m 1700



COLONNE

C.P. 13"3/8 a 323 m 9"5/8 a 1000 m

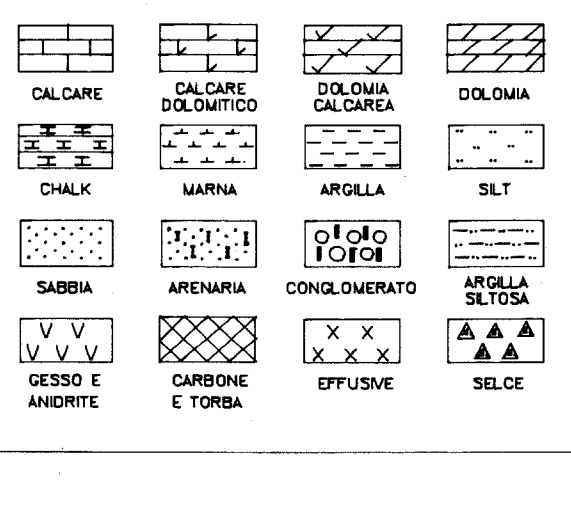
DATI GENERALI

COMMITTEE: SPI
POZZO: SCANDIANO 1
CONCESSIONE: Area ENI
REGIONE: Emilia Romagna
COORDINATE: Lat. 44 deg 36' 34" Long. 2 deg 45' 15" W MM
INDICE API
DATA INIZIO: 16/02/93
QUOTE: PC-LM 74 m
RKB - PC 5.2 m
PROF. FINALE: 1700 m
CONTRATTISTA: HYDRORILLING
MPIANTO: Ideco Pignone H400

FANGO

FW-GE-LS da m 0 a m 1700

SIMBOLI LITOLOGICI



ABBREVIAZIONI E SIMBOLI

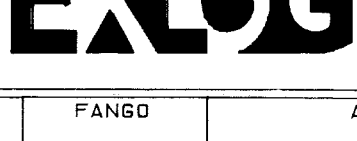
- NB NEW BIT, RBG RETURN BIT, CB CORE BIT, WOB WEIGHT ON BIT, RPM REVS PER MINUTE, FLO FLOW CHECK, CR CIRCULATE RETURNS, PR POOR RETURNS, NR NO RETURNS, LAT LOGGED AFTER TRIP, BG BACKGROUND GAS, TG TRIP GAS, STG SHORT TRIP GAS, CG CONNECTION GAS, SWG SWAB GAS, SWG SURVEY GAS, C CARBIDE TEST, MW MUD DENSITY, VIS FUNNEL VISCOSITY, F FILTERATE API, PV PLASTIC VISCOSITY, YP YIELD POINT, SOL SOLIDS %, SD SAND %, S GALIN. g/l NaCl, RM MUD RESISTIVITY, RMF FILTERATE RESISTIVITY, FR FLOW RATE, TFA TOTAL FLOW AREA

INTERVALLO CAMPIONATO

PROF. da m 330 a m 1700
DATA: dal 19/02/93 al 01/03/93
SCALA: 1:1000 UNITA' LOG: 230
OPERATORI: P. Clerici, P. Limongi, P. Pozzar, D. Scano, S. Soffi

- SCARPA COLONNA, INTERVALLO CARPATO, NON RECUPERATO, CAROTE DI PARITE, NON RECUPERATE, FLUORESCENZA, LOG LITOLOGICO, CAROTE E RECUPERO, MANIFESTAZIONI, COLONNE, D.S.T., DESCRIZIONE LITOLOGICA

Oil-Based on the oil in unswabbed cuttings and X staining in swabbed cuttings



SCANDIANO 1 FORMATION EVALUATION LOG



Scale 1 : 1000

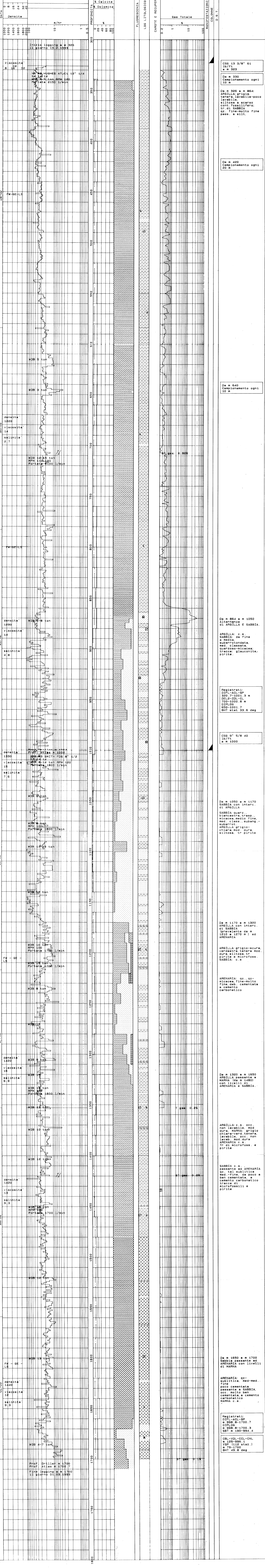


Table with columns: FR, CODICE LOG, RUN, PROF. MIS. m, PROF. VERT. m, TEMPERATURA MISURATA, t, Δt. Includes data for runs 1 and 2 at various depths.

Note: t = tempo di durata dell'ultima circolazione, Δt = tempo tra l'arresto dell'ultima circolazione e la misura della temperatura