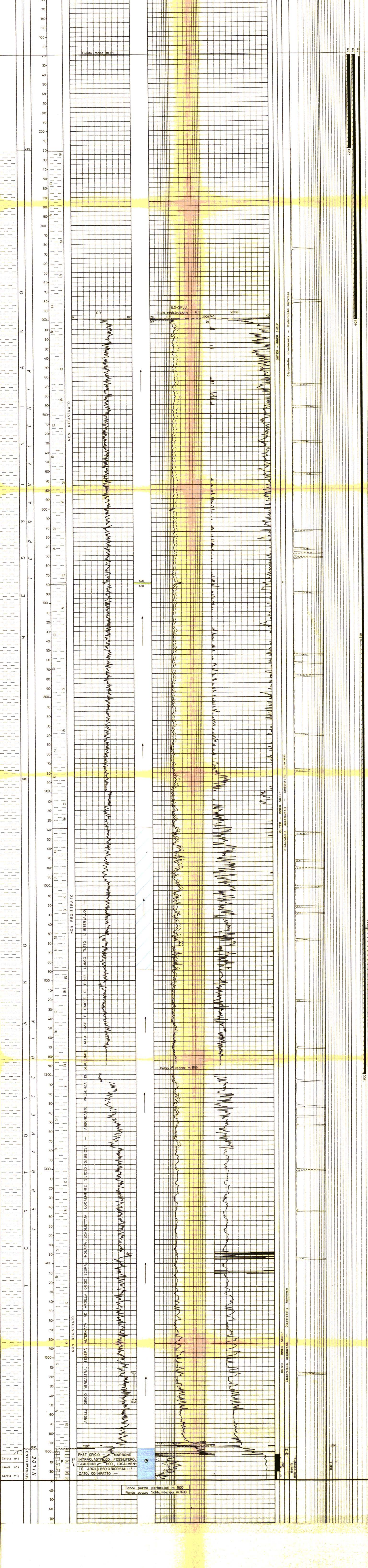


Project information including well name (2851), date (21-08-1985), and company details (Agip, Shell, ENI).

Geological legend defining rock types (ROCCHE TERRIGENE, CARBONATICHE, IGNEE E METAMORFICHE), fossils (PARTICELLE E FOSSILI), and stratigraphic structures (STRUTTURE SEDIMENTARIE E DIAGENETICHE).

Well parameters: depth (2608.95 m), pressure (22338.72 bar), and temperature (120.00 °C).



Notes (NOTA) regarding depth references and lithological descriptions.

Table with 4 columns: CAROTE DI FONDO (Wellbore), ANALISI (Analysis), and other data points.

Table with 4 columns: CAROTE DI FONDO (Wellbore), ANALISI (Analysis), and other data points.

Table with 4 columns: CAROTE DI FONDO (Wellbore), ANALISI (Analysis), and other data points.

Table with 4 columns: CAROTE DI FONDO (Wellbore), ANALISI (Analysis), and other data points.

Table with 4 columns: CAROTE DI FONDO (Wellbore), ANALISI (Analysis), and other data points.

Table with 4 columns: CAROTE DI FONDO (Wellbore), ANALISI (Analysis), and other data points.

Table with 4 columns: CAROTE DI FONDO (Wellbore), ANALISI (Analysis), and other data points.

Table with 4 columns: CAROTE DI FONDO (Wellbore), ANALISI (Analysis), and other data points.

Table with 4 columns: CAROTE DI FONDO (Wellbore), ANALISI (Analysis), and other data points.

Table with 4 columns: CAROTE DI FONDO (Wellbore), ANALISI (Analysis), and other data points.