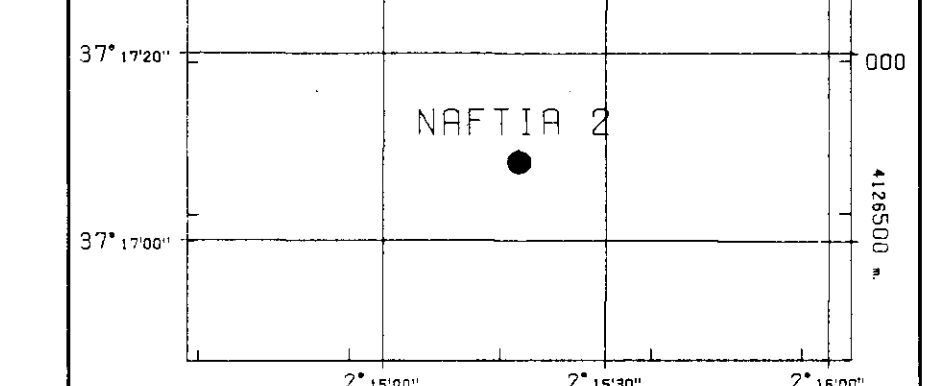
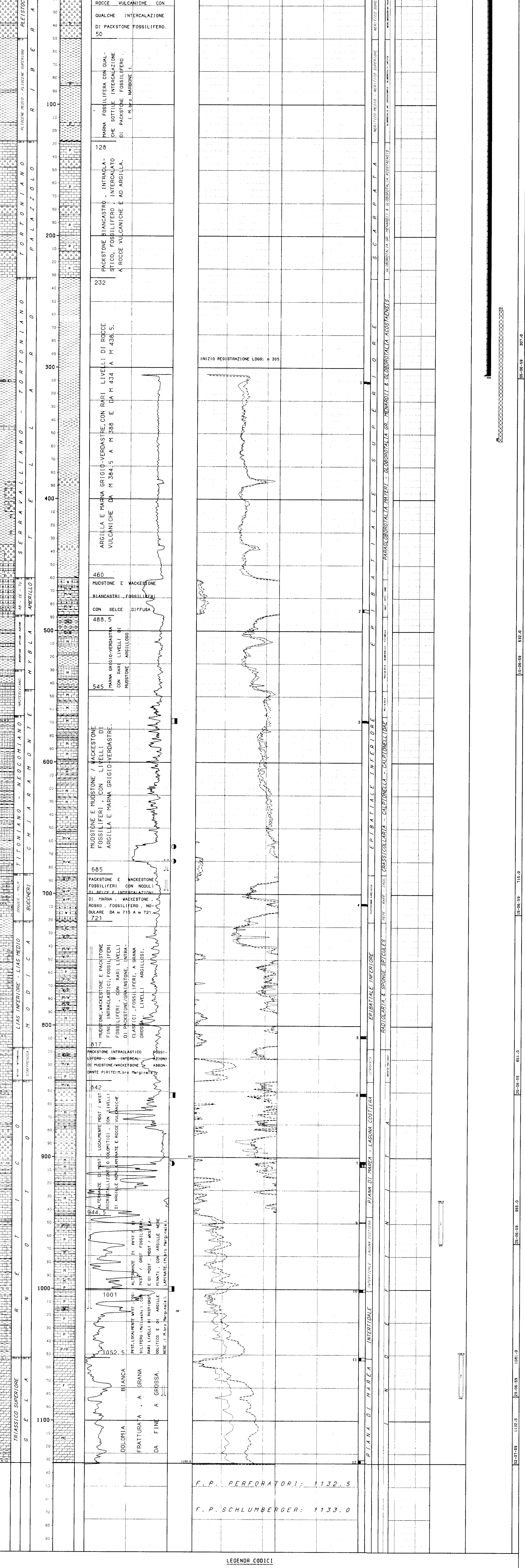


Table with columns: Data, Approvato da, Alloggio, etc. Includes names like RANACCA and V. Reverbenti.



Legend and symbols section. Includes 'ROCCHE TERRESTRI', 'ROCCHE CARBONIFERE', 'ROCCHE LIMBE E METAFOSFIDE', 'STRUTTURE SEDIMENTARIE E DIAGENETICHE', 'MINERALIZZAZIONI', 'TIPO DI FORBITA', 'PARTICELLE E FOSSILI', 'SIMBOLI VARI', and 'MANIFESTAZIONI DURANTE LA PERFORAZIONE'.

Table with columns: Campo, Data, Profondità, etc. Includes data for CARONNELLO 02 and AGIP MINERARIA.



LEGENDA CODICI

NUMERO IMPIANTO: 1 NOVE IMPIANTO CARONNELLO 02 G.T.R. 226.9 m.s.l.m.

NOTA: Tutte le profondità sono in metri e riferite al P.T.R. Le pressioni sono in Kg/cm2, le temperature in gradi C, i tempi in ore:minuti.

Table with columns: Fr., Top, Bottom, Camp., Tipo, Sr. for various well sections.

Table with columns: Fr., Prof., M., Prof., V., Str., Dev., Dir., Geog. for verticality measurements.

Table with columns: Fr., Top, Bottom, Camp., Tipo, Sr. for cuttings.

Table with columns: CAROTA, No., Fr., Top, Bottom, Camp., Tipo, Sr. for core samples.

Table with columns: CAROTA, No., Fr., Top, Bottom, Camp., Tipo, Sr. for core samples.

Table with columns: CAROTA, No., Fr., Top, Bottom, Camp., Tipo, Sr. for core samples.

Table with columns: CAROTA, No., Fr., Top, Bottom, Camp., Tipo, Sr. for core samples.

Table with columns: CAROTA, No., Fr., Top, Bottom, Camp., Tipo, Sr. for core samples.

Table with columns: CAROTA, No., Fr., Top, Bottom, Camp., Tipo, Sr. for core samples.

Table with columns: CAROTA, No., Fr., Top, Bottom, Camp., Tipo, Sr. for core samples.

Table with columns: CAROTA, No., Fr., Top, Bottom, Camp., Tipo, Sr. for core samples.

Table with columns: CAROTA, No., Fr., Top, Bottom, Camp., Tipo, Sr. for core samples.

Table with columns: CAROTA, No., Fr., Top, Bottom, Camp., Tipo, Sr. for core samples.

Table with columns: CAROTA, No., Fr., Top, Bottom, Camp., Tipo, Sr. for core samples.

Table with columns: CAROTA, No., Fr., Top, Bottom, Camp., Tipo, Sr. for core samples.

Table with columns: CAROTA, No., Fr., Top, Bottom, Camp., Tipo, Sr. for core samples.

Table with columns: CAROTA, No., Fr., Top, Bottom, Camp., Tipo, Sr. for core samples.

Table with columns: CAROTA, No., Fr., Top, Bottom, Camp., Tipo, Sr. for core samples.

Table with columns: CAROTA, No., Fr., Top, Bottom, Camp., Tipo, Sr. for core samples.

Table with columns: CAROTA, No., Fr., Top, Bottom, Camp., Tipo, Sr. for core samples.

Table with columns: CAROTA, No., Fr., Top, Bottom, Camp., Tipo, Sr. for core samples.

Table with columns: CAROTA, No., Fr., Top, Bottom, Camp., Tipo, Sr. for core samples.

Table with columns: CAROTA, No., Fr., Top, Bottom, Camp., Tipo, Sr. for core samples.

Table with columns: CAROTA, No., Fr., Top, Bottom, Camp., Tipo, Sr. for core samples.

Table with columns: CAROTA, No., Fr., Top, Bottom, Camp., Tipo, Sr. for core samples.

Table with columns: CAROTA, No., Fr., Top, Bottom, Camp., Tipo, Sr. for core samples.

Table with columns: CAROTA, No., Fr., Top, Bottom, Camp., Tipo, Sr. for core samples.

Table with columns: CAROTA, No., Fr., Top, Bottom, Camp., Tipo, Sr. for core samples.

Table with columns: CAROTA, No., Fr., Top, Bottom, Camp., Tipo, Sr. for core samples.

Table with columns: CAROTA, No., Fr., Top, Bottom, Camp., Tipo, Sr. for core samples.

Table with columns: CAROTA, No., Fr., Top, Bottom, Camp., Tipo, Sr. for core samples.

Table with columns: CAROTA, No., Fr., Top, Bottom, Camp., Tipo, Sr. for core samples.

Table with columns: CAROTA, No., Fr., Top, Bottom, Camp., Tipo, Sr. for core samples.

Table with columns: CAROTA, No., Fr., Top, Bottom, Camp., Tipo, Sr. for core samples.

Table with columns: CAROTA, No., Fr., Top, Bottom, Camp., Tipo, Sr. for core samples.

Table with columns: CAROTA, No., Fr., Top, Bottom, Camp., Tipo, Sr. for core samples.

Table with columns: CAROTA, No., Fr., Top, Bottom, Camp., Tipo, Sr. for core samples.

Table with columns: CAROTA, No., Fr., Top, Bottom, Camp., Tipo, Sr. for core samples.

Table with columns: CAROTA, No., Fr., Top, Bottom, Camp., Tipo, Sr. for core samples.

Table with columns: CAROTA, No., Fr., Top, Bottom, Camp., Tipo, Sr. for core samples.

Table with columns: CAROTA, No., Fr., Top, Bottom, Camp., Tipo, Sr. for core samples.

Table with columns: CAROTA, No., Fr., Top, Bottom, Camp., Tipo, Sr. for core samples.

Table with columns: CAROTA, No., Fr., Top, Bottom, Camp., Tipo, Sr. for core samples.

Table with columns: CAROTA, No., Fr., Top, Bottom, Camp., Tipo, Sr. for core samples.

Table with columns: CAROTA, No., Fr., Top, Bottom, Camp., Tipo, Sr. for core samples.