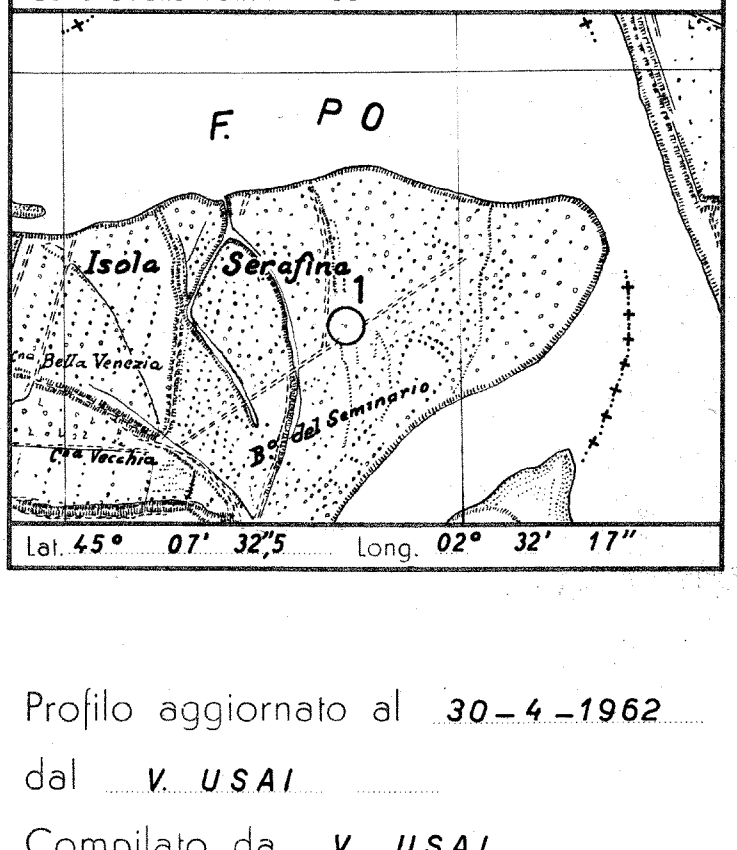


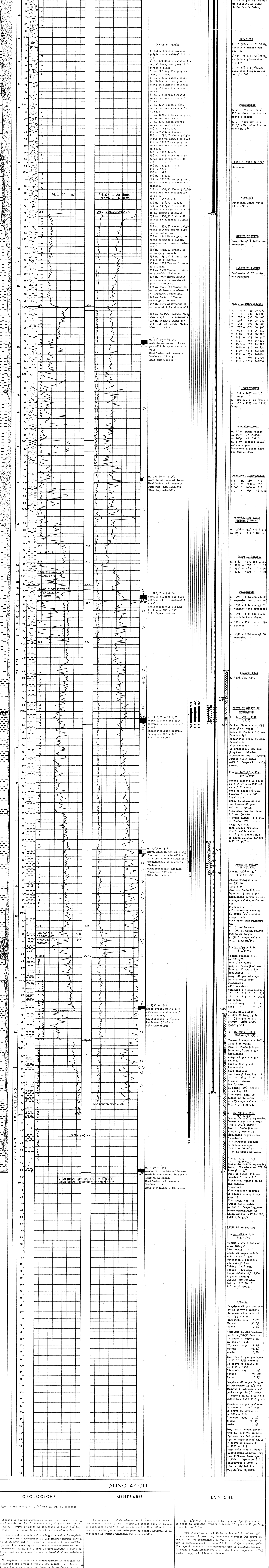
MONTICELLI D'ONGINA



Profilo aggiornato al 30-4-1962 dal V. USAI. Geologo da V. USAI. Geologo di cantiere A. GIAGINI. Visto da

Legend for geological symbols and measurements, including symbols for clay, sand, silt, gas, oil, and various types of wells and casing.

Impianto CARDWELL Q/3 Inizio perforazione 6-9-1955 Intervallo in produzione STERILE QUOTA s.l.m. Tavola Rotary n. 4330



ANNOZZIONI: GEOLOGICHE, MINERARIE, TECNICHE. Includes detailed notes on geological observations, mineral characteristics, and technical details of the well's operation and testing.