

ROCCHE TERRIGENE: Tabelle with symbols for various rock types like breccia, calcare, etc.

ROCCHE CARBONATICHE: Tabelle with symbols for calcare, dolomite, etc.

ROCCHE IGNEE E METAMORFICHE: Tabelle with symbols for intrusive, effusive, etc.

STRUTTURE SEDIMENTARIE E DIAGENETICHE: Tabelle with symbols for stratification, etc.

MINERALIZZAZIONE: Tabelle with symbols for mineral types like NaCl, CaSO4, etc.

MANIFESTAZIONI DURANTE LA PERFORAZIONE: Tabelle with symbols for gas, oil, etc.

CEMENTI: Tabelle with symbols for different cement grades.

ALTRE ROCCE: Tabelle with symbols for other rock types.

PARTICELLE E FOSSILI: Tabelle with symbols for fossils and particles.

TIPDI PORDITA: Tabelle with symbols for different types of porosity.

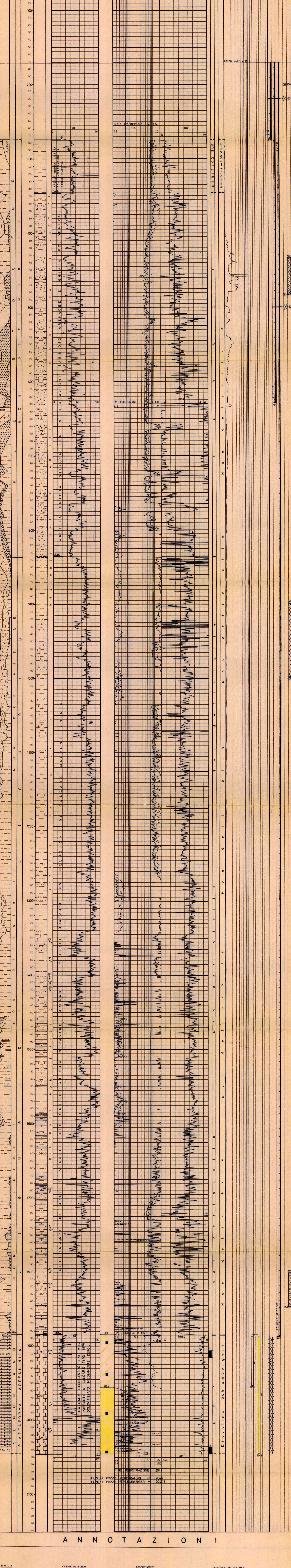
SIMBOLIVARI: Tabelle with symbols for various geological features.

MANIFESTAZIONI DURANTE LA PERFORAZIONE: Additional symbols for well operations.

SCARABEO 2 SAPEM 2045 10-01-1987 05-03-1987 17-03-1987

CUTTINGS: SAPEM 2045 10-01-1987 05-03-1987 17-03-1987

POTENZIALE SPONTANEO (mV) GAMMA RAY (API UNITS) RESISTIVITA' ohm m/ft SONIC Δt (μ sec/ft)



ANNOTAZIONI

NOTA: Tutte le profondità sono riferite al PTR. CAROTE DI FONDO: Recupere n. 7 carote... TUBAZIONI: 30" a m. 273... TERNOMETRI: 1" in CSG # 1343/8... CEMENT BOND LOG: 1" in CSG # 1343/8... MISURE DI VERTICALITA': (Totale) A = 632 - 1/2"...