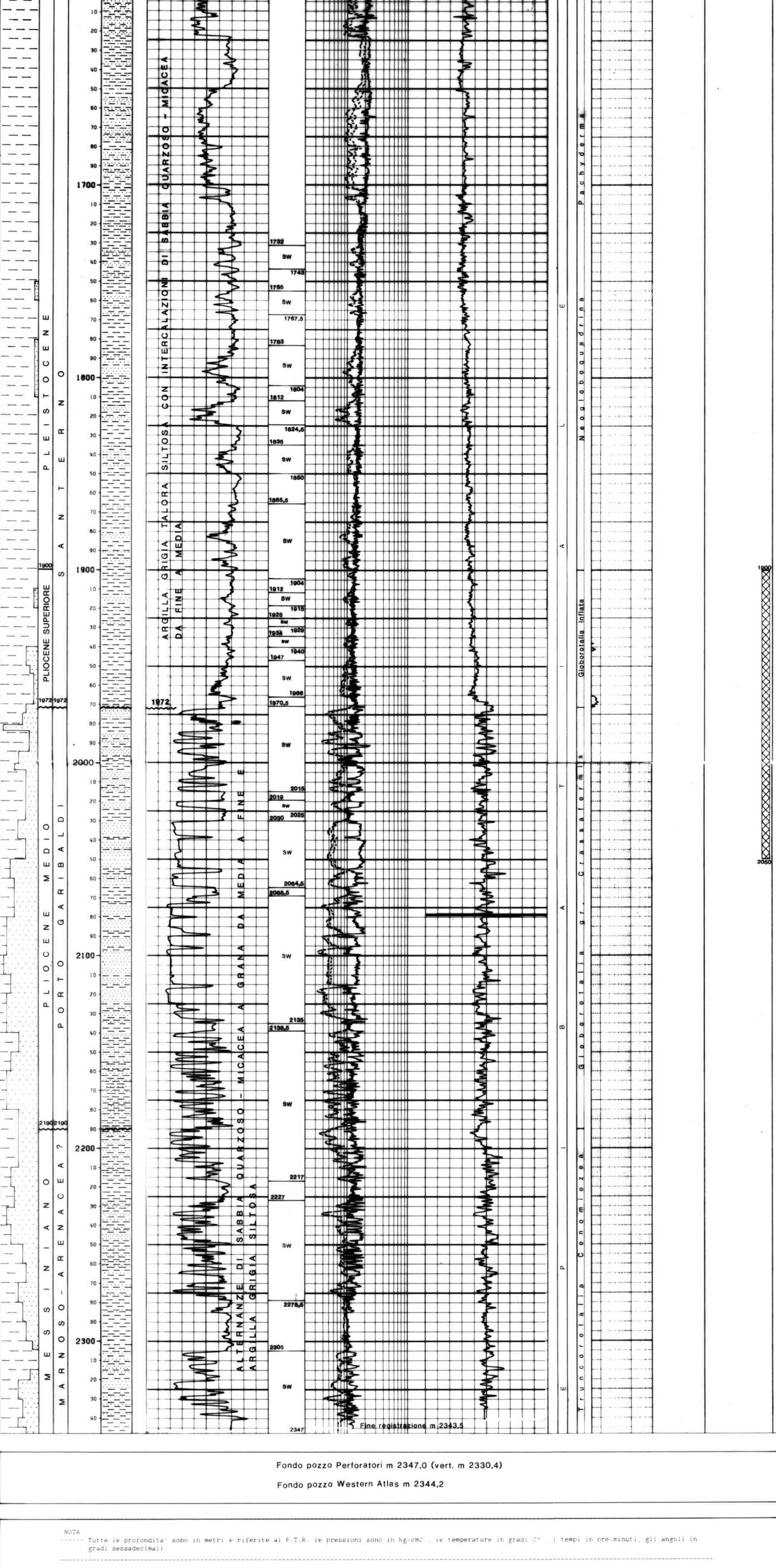
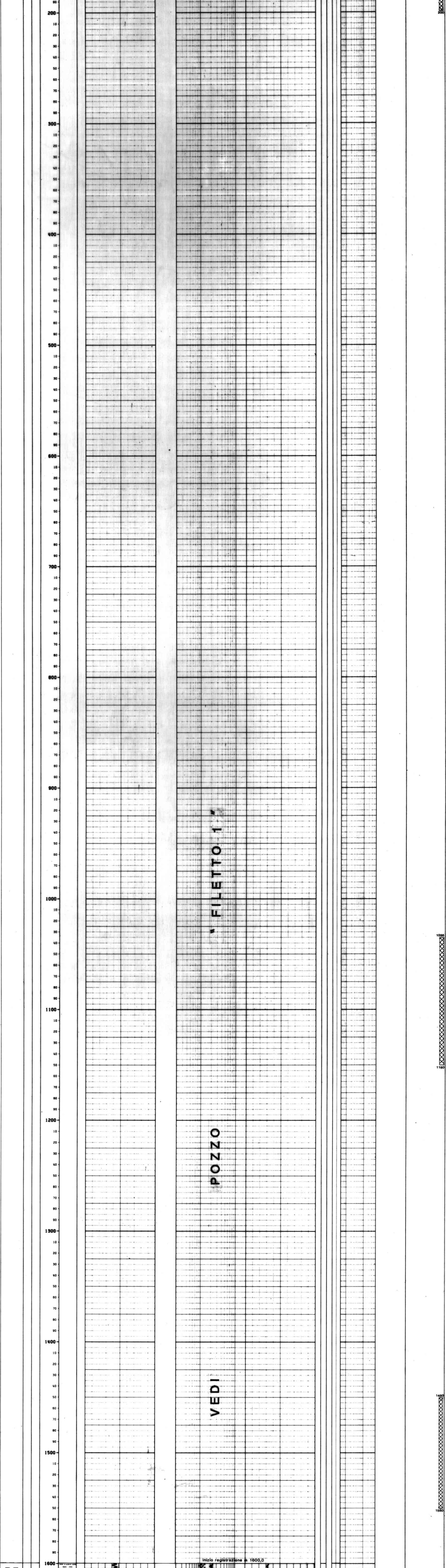


Geological and technical details including scale (1:1000), project name (AREA ENI - PIANURA PADANA), and company information (AGIP SpA).

Legend for geological symbols and codes, including rock types, lithology, and well characteristics.

Geological cross-section showing stratigraphic layers and well location.



Fondo pozzo Perforatori m 2347,0 (vert. m 2330,4) Fondo pozzo Western Atlas m 2344,2

NOTE: Technical notes regarding well operations, measurements, and data recording procedures.

RESULTS: Summary of well completion status, including perforation details and final depth.