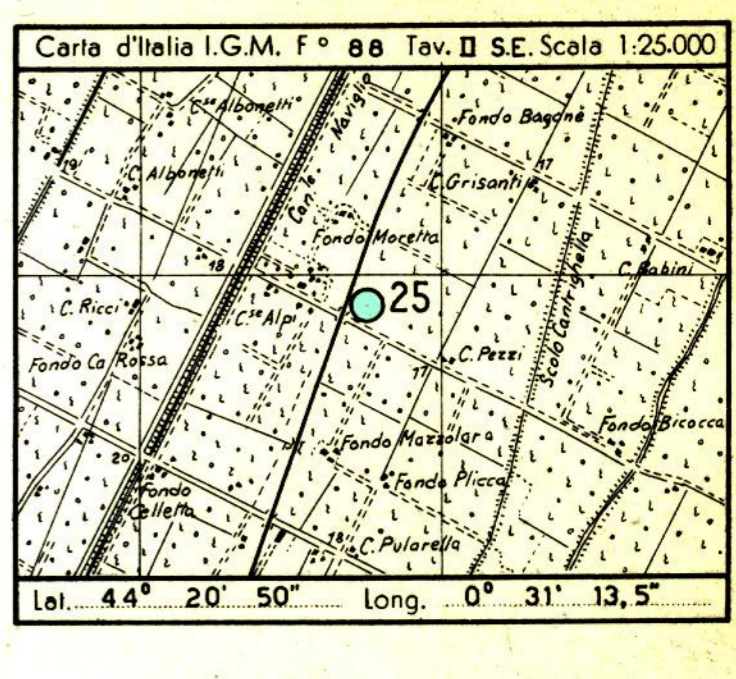
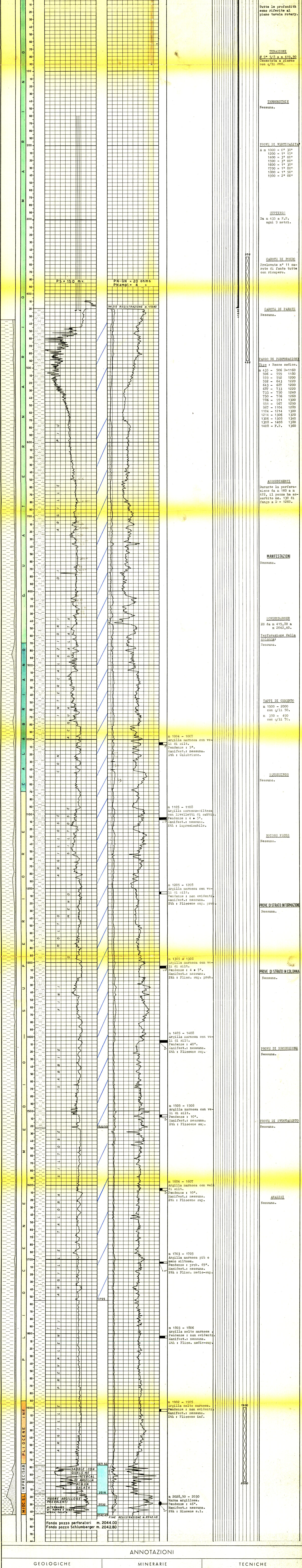


CANTIERE di COTIGNOLA POZZO N° 25



Legend for geological symbols and lithology, including symbols for basalt, sand, clay, and various types of water and gas traces.

Impianto IDECO PIGNONE E-525 Inizio perforazione 21-12-1960 Intervallo in produzione POZZO STERILE QUOTA s.l.m. Tavola Rotary m. 23.41



ANNOTAZIONI: GEOLOGICHE, MINERARIE, TECNICHE. Stratigrafia aggiornata al 22.12.1961 dai. Drr. Zaleschi. De Francesco. Pozzo sterile. Nessuna.