

CARTOCETO 1

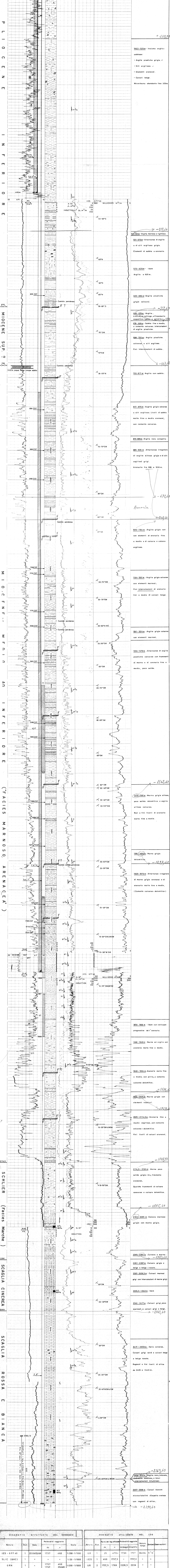
PERMESSO MONTEFELCINO TITOLARE OPERATORE ELF ITA. MIN. ELF ITA. MIN. CC1

PAESE ITALIA
COMUNE SERRUNGARINA
PROVINCIA MARCHE (Pesaro)

Table with 2 columns: COORDINATE (GEOGRAFICHE, GAUSS BOAGA) and INIZIO SONDAGGIO. Includes data for X, Y, Z coordinates and drilling start/end dates.

Table with 2 columns: IMPIANTO (GB 500-DELTA OV.DR. C*) and FONDO PERFORAZIONE (2698 m). Includes details on well type and depth.

AGGIORNATO IL 27/3/89 SCALA 1:1000



Vertical column of lithological descriptions and depth markers. Includes handwritten annotations and depth values such as 10-93m, 93-186.2m, etc.

DIAGRAFIE EFFETTUATE NEL SONDAGGIO. Table listing performed logs with columns for Nature, Run, Date, Depth, and Scale.

DIAGRAFIE UTILIZZATE NEL LOG. Table listing used logs with columns for Nature, Run, Date, Depth, and Scale.

TESTS TF (OHP) N°1 = 2583,13 ape 2 + 15 mh secco (300l fango) PV:20mm-PF:30mm PV:231bars-PF:189bars